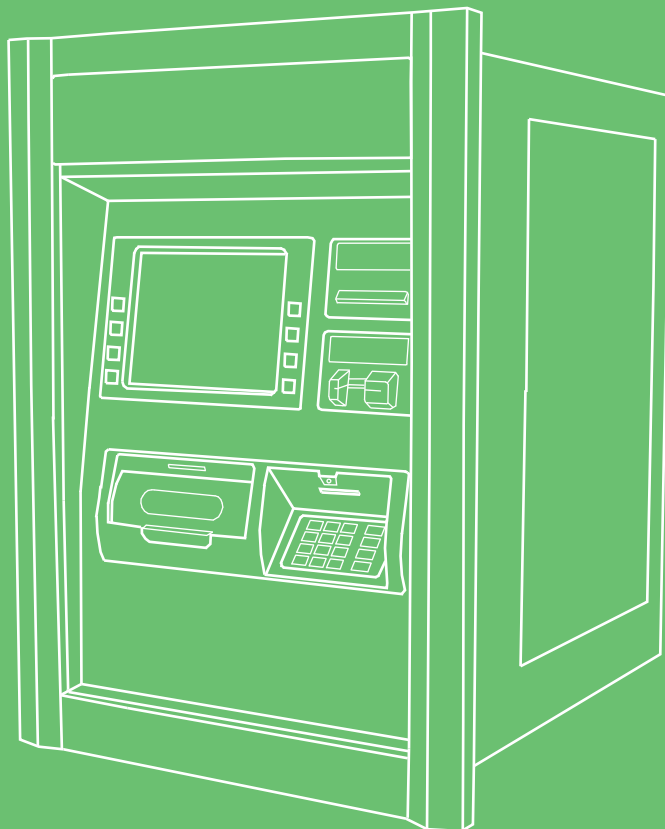


MCWHORTER
ATM
SERVICES



Hantle Inc.

Hantle T4000 Operator Manual



TABLE OF CONTENTS

1. INTRODUCTION

- 1.1 Features
 - 1.1.1 About the Hantle T4000™
- 1.2 Specifications
 - 1.2.1 Dimensions
 - 1.2.2 Front Panel Identification
 - 1.2.3 Cash Dispensing Unit
 - 1.2.4 Receipt Printer
 - 1.2.5 Main Control Board
 - 1.2.6 Operating Environment
- 1.3 Warranty/Service

2. INSTALLATION

- 2.1 Hantle T4000™ Pedestal Assembly
 - 2.1.2 Physical Installation
 - 2.1.3 Hardware Setup

3. PROGRAMMING

- 3.1 Initial Setup
 - 3.1.1 Accessing the Operator Function Menu
 - 3.1.2 When An Error Occurs
 - 3.1.3 EPP Keypad
- 3.2 The Host Setup Menu
 - 3.2.1 Key Management
 - 3.2.2 Set Terminal ID Number
 - 3.2.3 Set Connect Timer
 - 3.2.4 Set Routing ID Number / COMS ID
 - 3.2.5 Host Telephone Number
 - 3.2.6 Health Check Message
 - 3.2.7 Remote Monitor
 - 3.2.8 Trial Day Total
- 3.3 The System Setup Menu
 - 3.3.1 Set Clock
 - 3.3.2 Optional Languages
 - 3.3.3 Speaker Volume
 - 3.3.4 ISO #1, #3 Enable / Disable
 - 3.3.5 Change Passwords
 - 3.3.6 Device Setup
 - 3.3.6.1 SPR Setup
 - 3.3.6.2 Modem Setup
 - 3.3.6.3 MCR (Card Reader) Setup
 - 3.3.6.4 CDU Setup
 - 3.3.7 Set Reboot Time
 - 3.3.8 Set Serial Number
- 3.4 Customer Setup Menu
 - 3.4.1 Change Message
 - 3.4.2 BIN Lists
 - 3.4.3 Optional Features
 - 3.4.4 Change Host Processor
 - 3.4.5 Surcharge Mode
 - 3.4.6 Graphics

- 3.5 Transaction Setup
 - 3.5.1 Dispense Limit
 - 3.5.2 Denomination
 - 3.5.3 Fast Cash
- 3.6 TCP/IP Setup

4. OPERATION

- 4.1 Opening and Closing
 - 4.1.1 Opening the Security Door
 - 4.1.2 Closing the Security Door
 - 4.1.3 Opening the Front Panel
 - 4.1.4 Closing the Front Panel
 - 4.1.5 Operating and Changing the Electronic Lock
- 4.2 Cash Operations
 - 4.2.1 Adding Cash to the Cassette (TCDU)
 - 4.2.2 Emptying the Reject Bin (TCDU)
 - 4.2.3 Adding Cash to the Cassette (MCDU)
 - 4.2.4 Emptying the Reject Bin (MCDU)
 - 4.2.5 Loading the Receipt Paper
- 4.3 Settlement Menu
- 4.4 Journal Menu
- 4.5 Reports Menu

5. DIAGNOSTICS

- 5.1 Diagnostics Menu
- 5.2 Service Panel

6. CUSTOMER TRANSACTIONS

- 6.1 Opening Procedure
- 6.2 Withdrawal Transaction
- 6.3 Balance Inquiry Transaction
- 6.4 Transfer Transaction
- 6.5 Closing Procedure
- 6.6 Error Recovery

APPENDIX

- A. Error Codes
- B. Clearing NVRAM
- C. TDES Master Key Installation
- D. Graphics Installation (On screen and Receipt)
- E. CDU Preventative Maintenance
- F. T4000 Installation Instructions / Specs

Hantle T4000™

1.1 FEATURES

1.1.1 ABOUT THE Hantle T4000™

The Hantle T4000™ represents the absolute best value in retail through-the-wall ATMs. Providing the look and function of a true bank ATM, an eye-catching design coupled with numerous enhancements to ensure ADA, TDES and VISA/PCI/Interac PIN security compliance, makes the Hantle T4000™ the clear choice for any through-the-wall retail ATM deployment.

The new Hantle 4000T™ contains many high end standard features such as a high-brightness 10.4 inch SVGA LCD panel, voice and LED guidance systems, encrypted pin pad. Communication with your processor is available via a 56K dial-up modem or integrated TCP/IP (SSL). The Hantle T4000™ delivers high quality and high performance at a value price.

H/W FEATURES

- UL 291 Business Hour Service Vault featuring reinforced steel bottom.
- Electronic lock
- 800 x 600 high-resolution, high-brightness 10.4" SVGA display
- Communications via 56K modem or TCP/IP (SSL)
- 1700 note fixed cassette dispenser
- DIP type magnetic card reader (EMV Optional)
- 80mm Thermal receipt printer for high speed printing
- Modular design for easy maintenance
- Lighted transaction guidance system
- Meets ADA Standards for Height, Reach and Keypad layout

FUNCTIONAL FEATURES

- Electronic journal stores over 40,000 transactions
- Supports English, Spanish, & French
- Customizable on screen advertisement graphics
- Receipt graphic and coupon functions

1.2 SPECIFICATIONS

Hantle T4000™ SPECIFICATIONS

1.2.1 Dimensions

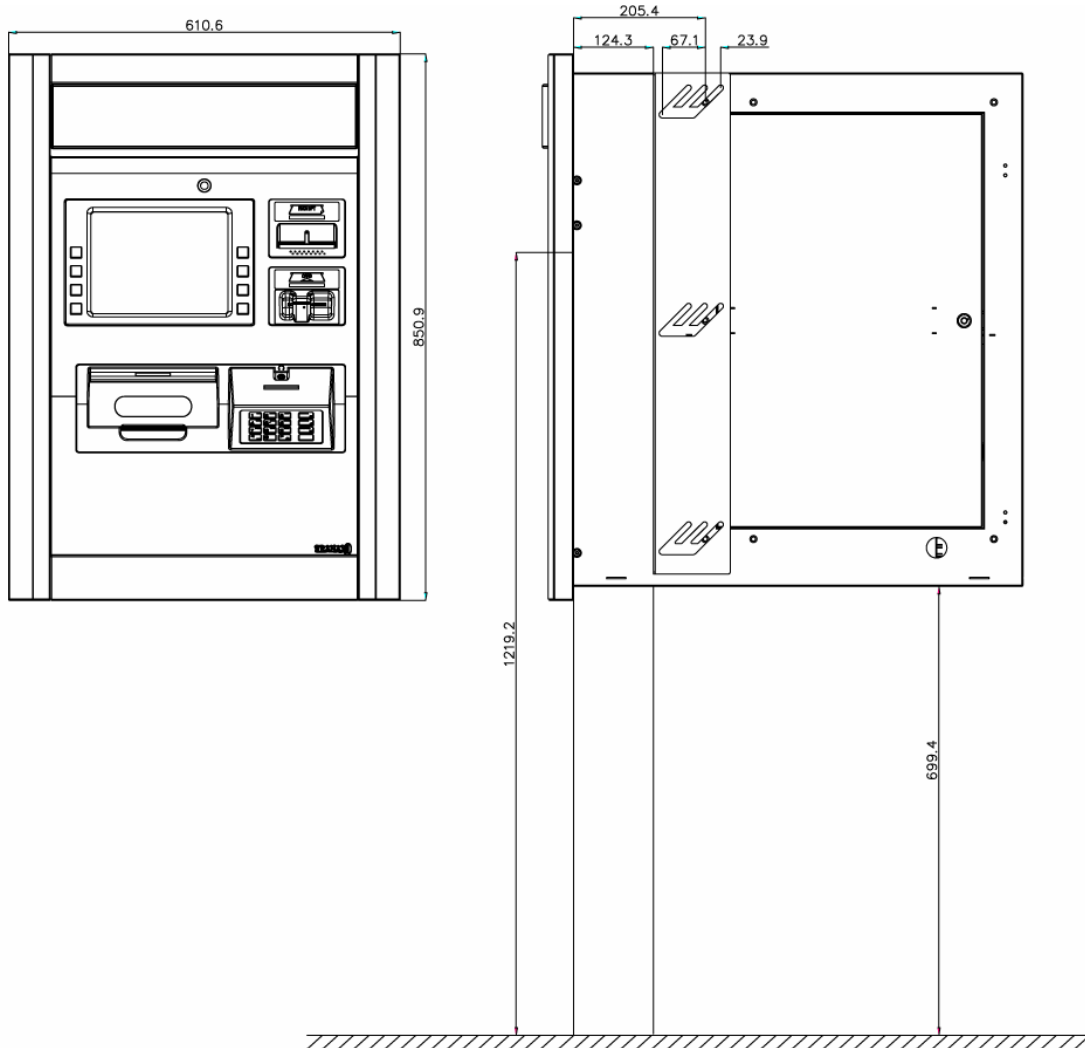


Fig. 1 Hantle T4000™ Dimensions (mm)

WEIGHT: 390 lbs.

HEIGHT: 31.5"

WIDTH: 20"

DEPTH: 27.5"

(dimensions of main body, not including front bezel)

See Section 2 for installation / construction dimensions.

1.2.2 Front Panel Identification

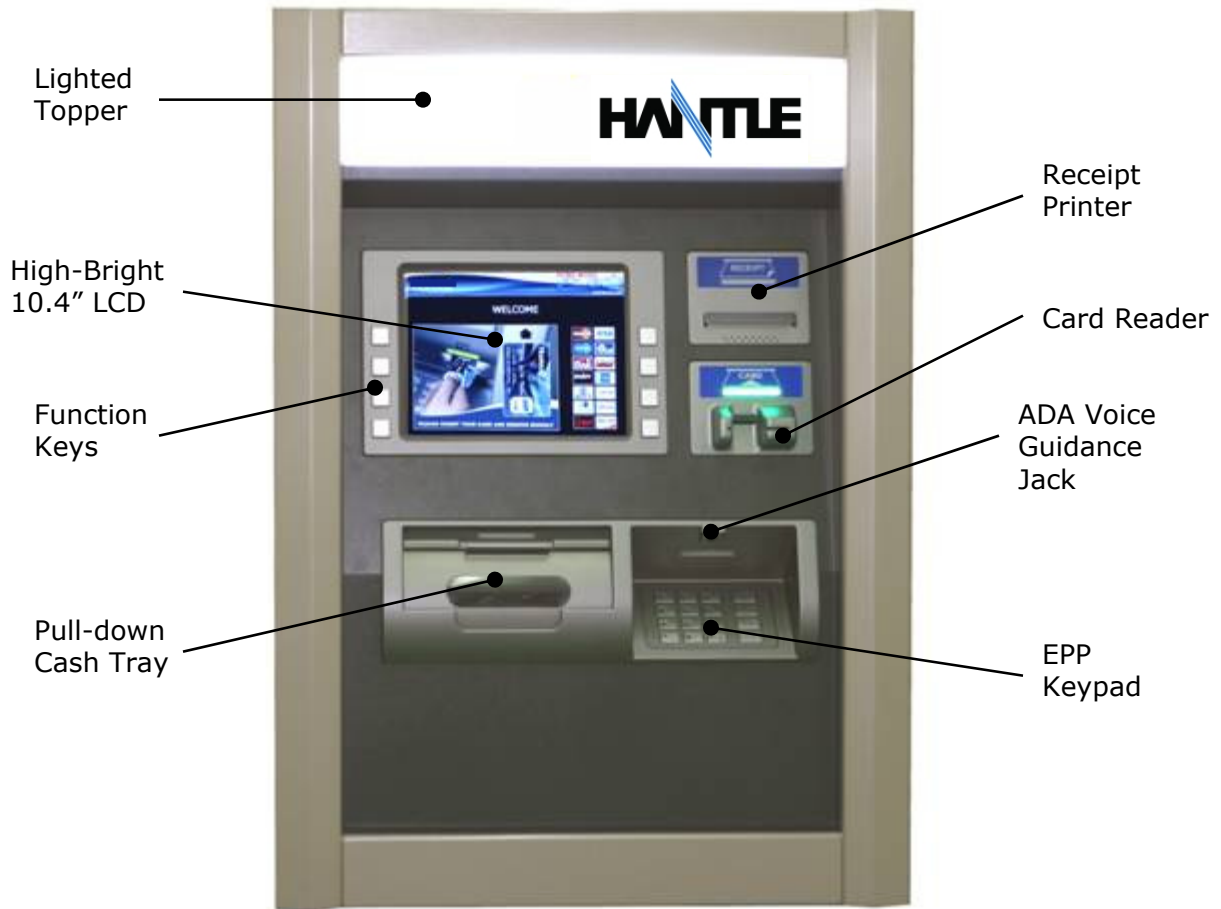


Fig. 3 Front Panel Identification

LCD

Screen Size: 10.4"
 High Resolution Color – High Brightness
 800 x 600 SVGA
 8 Menu Keys

KEYPAD

Lab Certified VISA/PCI/Interac compliant EPP (Encrypting Pin Pad)
 10 Alphanumeric, ◀, ▶, CANCEL, CLEAR, ENTER, BLANK Keypads

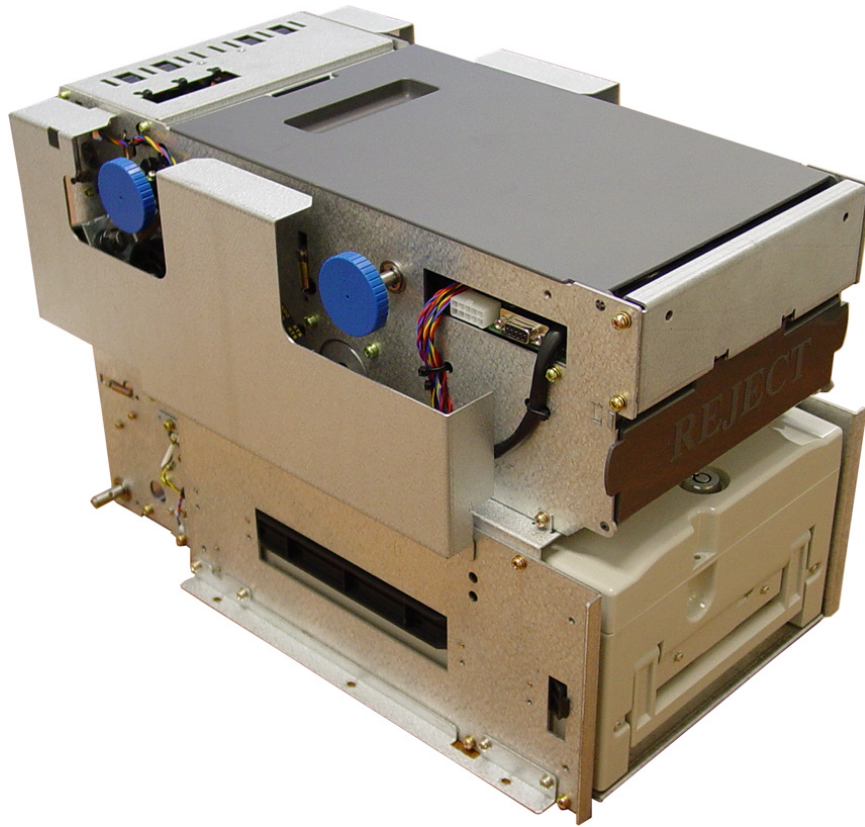
Voice Guidance Port

Voice assisted operation available through the headphone jack on the front bezel

Lighted Guidance System

LED lights guide the customer through the transaction. Includes keypad light during PIN entry.

1.2.3 Cash Dispensing Unit



Cash Dispensing Unit
(Rear-Load model – MCDUx1)

CASH DISPENSING UNIT

Dispensing Speed: 2.5 notes/second

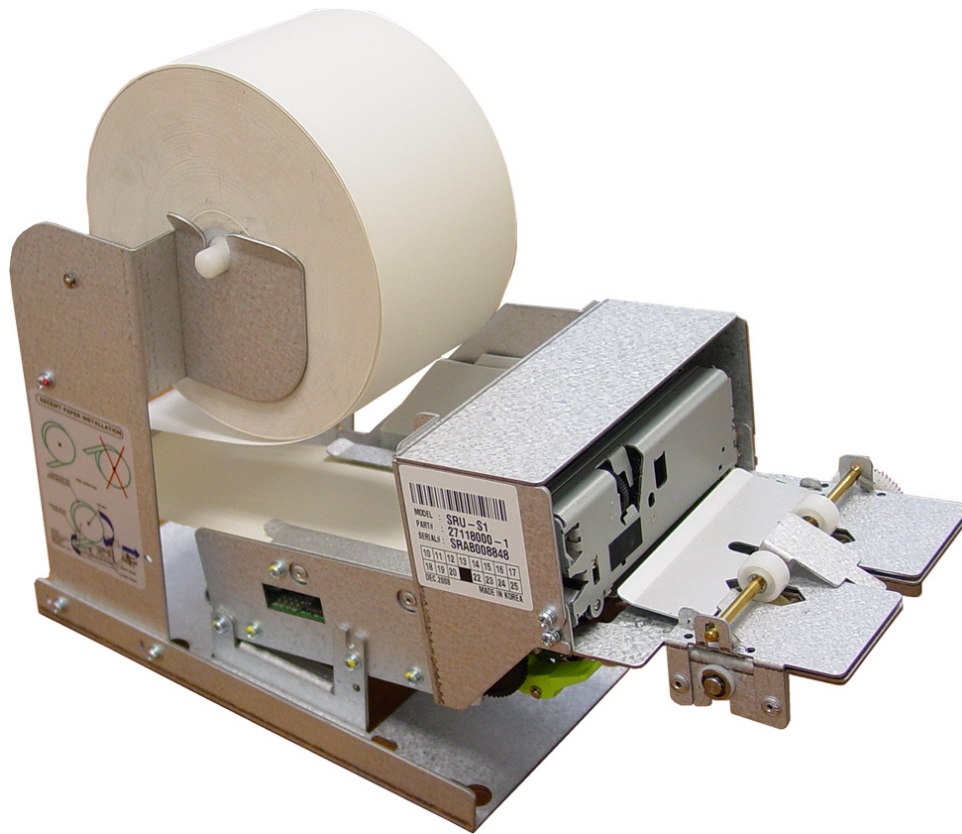
Cassette Capacity of 1700 new notes

Reject Bin

Ultrasonic double-detect module

Auto-recovery error system (automatically clears note jams by reversing motors)

1.2.4 Receipt Printer



Receipt Printer

RECEIPT PRINTER

Thermal line printer
40 characters/line
Semi-automatic roll paper setting
Motorized front push rollers
200 DPI Monographic images can be printed on receipt

PAPER SPECIFICATIONS

One sided thermal paper
Factory paper is thermal side out (can work either way)
6.5" outside diameter roll
3.125" inch wide
Core inside diameter 11/16 inch
21# weight (paper thickness)

1.2.5 Main Control Board

Samsung S3C2440AL-40 RISC 32-bit CPU
64 MB RAM
WinCE™ 5.0 Operating System
Modem: 56,000 bps dial-up modem (standard)
TCP/IP Ethernet connection – onboard SSL
Electronic Journal: 40,000 transactions
Battery back-up for set-up parameters (NVRAM)
Real time clock

1.2.6 Operating Environment

POWER REQUIREMENTS

110/220 VAC ± 10%, 50/60 Hz, 145 Watts

POWER CONNECTIONS

For warranty purposes, the Hantle T4000™ series ATM must be connected to a dedicated power circuit. This circuit must consist of line, neutral, and ground leads connected directly to the power circuit breaker panel. This circuit should not be shared with any other equipment. Use of a surge protector or uninterruptible power supply is recommended.

PHONE LINE REQUIREMENTS

The Hantle T4000 series ATM should be connected to a dedicated phone line. This line must be a direct dial analog line. Make sure to disable any voice-mail included on that phone line. This line should not be shared with any other equipment at the location. Use of shielded (CAT5) phone cable is recommended for best performance and to reduce the chance of interference. 'Digital' phone lines are NOT supported.

NETWORK (TCP/IP) REQUIREMENTS

For connection to processor via TCP/IP, use an Ethernet Patch-Cable (not included). The ATM must connect to a device (Router) that can provide DHCP support unless a static IP address is assigned by the service provider. It is recommended the ATM connect to a broadband router (Linksys, Netgear, Belkin) or similar device rather than directly to a Cable/DSL modem. For advanced or corporate networks, provide the IT staff with ATM Host IP address and Host Port information (available from your ISO).

TEMPERATURE

In storage : 32°F - 123°F (0°C ~ 49°C)
While operating : 40°F - 95°F (5°C ~ 35°C)

HUMIDITY

In storage : 10% < RH < 90%, non-condensed
While operating : 15% < RH < 85%, non-condensed

1.3 WARRANTY/SERVICE

MANUFACTURERS WARRANTY

Hantle USA, Inc. provides a limited one-year parts warranty for the T4000™ series ATM. Hantle guarantees your T4000™ ATM to be free from defects in materials and workmanship.

The one-year parts warranty period will begin 15 days from the shipping date.

WHAT IS COVERED:

- Cash Dispensing Unit (CDU) and Cash Cassette
- Receipt printer (SHU)
- LCD module
- Magnetic Card Reader (MCR)
- EPP Keypad
- Power Supply
- Mainboard (CE)
- Lock and locking mechanism ****LIMITED 90 DAY WARRANTY****
Dial and Electronic locks will be covered by a limited 90-day warranty (based on shipping date). Should the lock fail under normal use, Hantle will replace the lock only. Services required to open the vault and or replace the lock are at the expense of the ATM owner.

WHAT IS NOT COVERED:

- Power cable and modem cable
- Key lock and key
- Plastic Bezels
- Software upgrade
- Receipt printer jam
- Note jam
- Forgotten password or combination of lock
- Any damages from misuse, neglect, improper installation, and vandalism
- Any damages from "brown out" or low power, lightning, or any other 'acts of God'

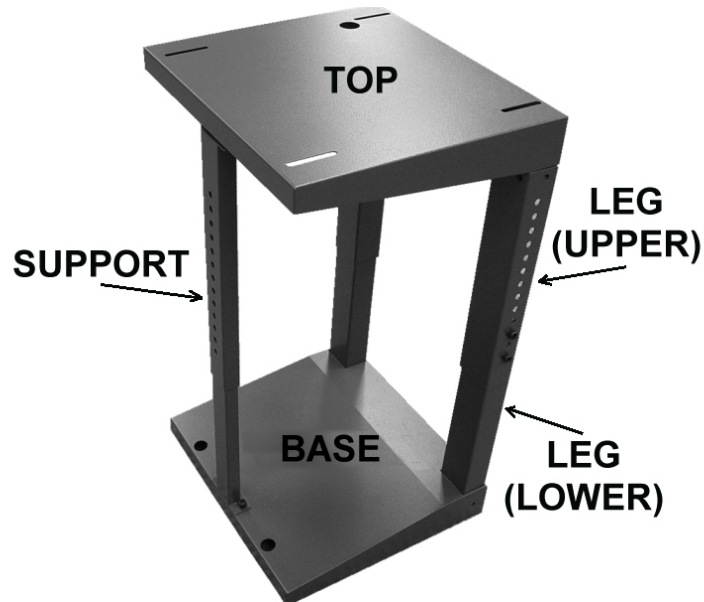
Your distributor/dealer may offer an enhanced or extended warranty in addition to the original manufacturers one-year warranty. Once the manufacturers warranty has expired, all claims for warranty service must be resolved directly between the distributor/dealer and the ATM owner.

OBTAINING SERVICE: If you have any problems or questions about your Hantle ATM, your dealer or distributor is your primary contact for assistance/service. Your manufacturers warranty is provided through your dealer or distributor.

SECTION 2: INSTALLATION

2.1 PEDESTAL ASSEMBLY

The T4000™ pedestal is designed to support 100% of the weight of the ATM. Installed properly, the wall should not carry any load. Below represents the assembled pedestal and its components.

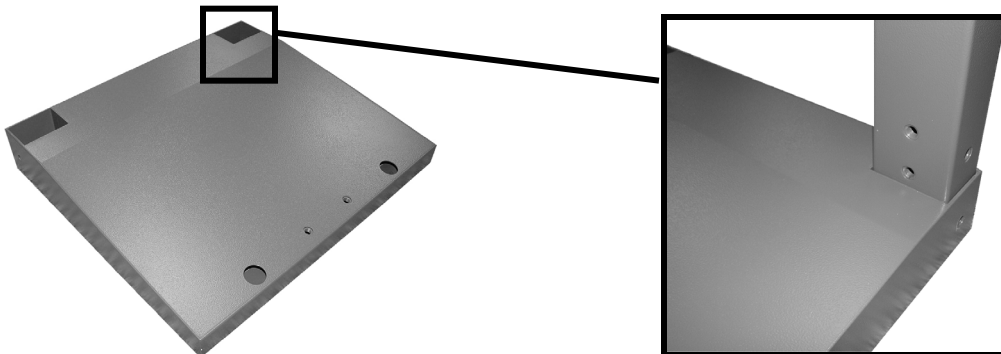


Step 1

Unpack the parts of the pedestal and remove the protective plastic coating. Included with the components are all necessary hardware including fasteners, adjustable feet and an Allen wrench used for assembly.

Step 2

Begin with the pedestal base. Install the lower legs into the base orienting the holes in the legs as shown below. There are 4 screws used for each leg to secure it to the base. NOTE: It may be necessary to use a mallet to fully seat the legs.



Step 3

Complete the installation of the lower leg assemblies by installing the screws from the underside of the pedestal base. Use the supplied Allen wrench to install the screws.

**Step 4**

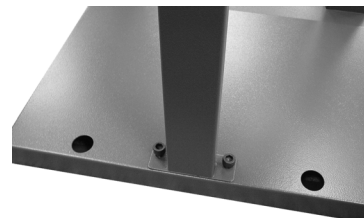
Next install the upper leg assemblies. The upper legs are machined with holes which allow you to adjust the over all height of the pedestal in increments. When planning the height of the pedestal, remember that there are over 2 inches in adjustable height available from the installation and adjustment of the screw in feet on the bottom.

**Step 5**

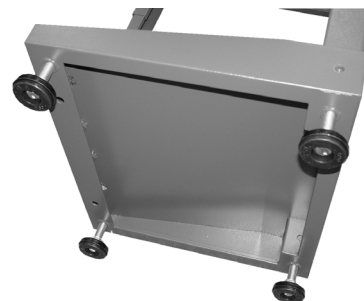
Once both legs are assembled and secured to the base, place the top of the pedestal on the leg assemblies. As with the lower legs, there are 4 screws per leg for attachment.

**Step 6**

Finish by installing the support bar to the rear of the assembled pedestal, and optionally the threaded feet into the bottom of base. The purpose of the feet is to provide a finer adjustment to the overall height of the pedestal.



Alternately, if the feet are not necessary, you can anchor the base to the floor using the 2 holes provided.



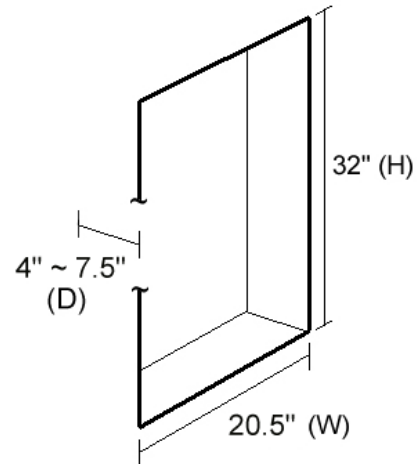
2.1.2 PHYSICAL INSTALLATION

IMPORTANT NOTE: Before planning any install, please be careful to follow ADA guidelines for height and reach access. Diagrams in this section represent a theoretical installation with unobstructed forward and parallel access. Specifics for ADA guidelines can be found at www.access-board.gov

Step 1

Begin by preparing the hole in the wall. Refer to the diagram at right for dimensions. The wall will not be carrying the weight of the machine. If the wall is thinner than 4" in thickness, you'll need to construct a backfill to make up the distance.

NOTE:
Hole diagram spec provides extra .25" for clearance on each side.

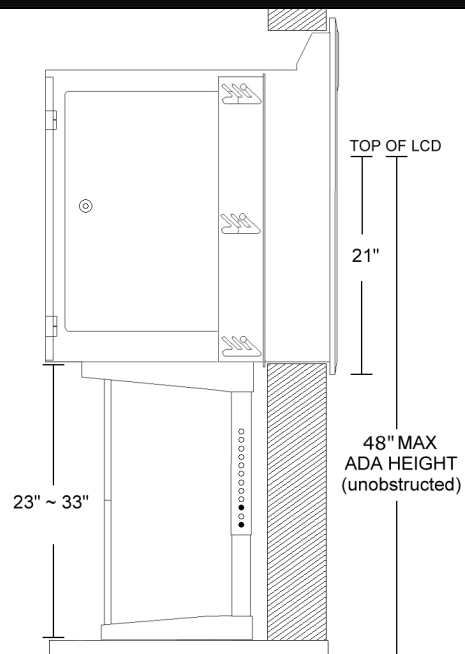


Step 2

When planning your installation, remember to compensate for height differences between the exterior floor and the interior. Pedestal height allows for 25 to 35 inches overall (+1~2" if pedestal feet are used).

Set the pedestal height to just above the bottom of the hole (the T4000™ outside bezel, when installed, extends below the bottom by 1/2").

Position the base as close to the wall as possible. The holes on top of the pedestal are elongated to give you several inches of horizontal movement. You want the pedestal as close to the back side of the wall as possible.

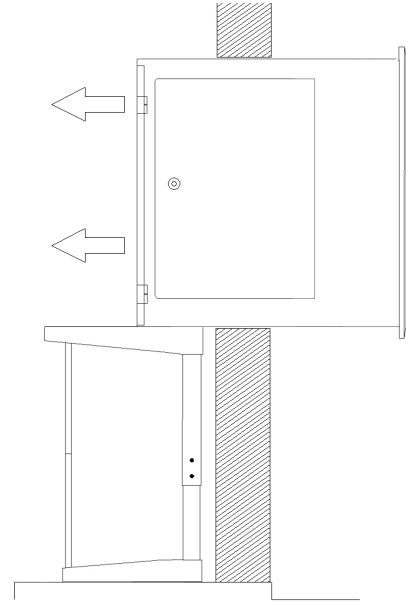


Step 3

The T4000™ should be installed from the exterior side of the wall. Remove the mounting brackets from each side of the vault. Install the machine into the wall and position it on the pedestal so that the mounting holes align. **NOTE:** Check clearance on the door hinges while installing into the wall.

Use the threaded feet underneath the base of the pedestal for fine height adjustment.

Remove the front bezel if necessary (see step 4) and apply a bead of water resistant caulking (silicon) or some material appropriate to your specific mounting location to seal the area behind the bezel.



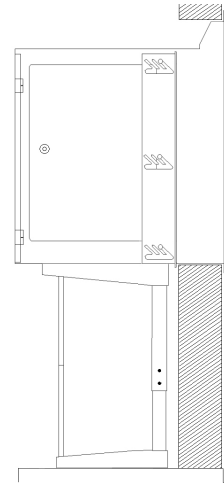
Step 5

If you need to remove the front bezel assembly from the machine during installation: There are 3 screws on either side of the machine (identified by red arrows - #1 below) as well as two brackets located behind the light up sign (identified by black thumbscrews #2 below) The lift the bezel upwards - #3 below.



Step 6

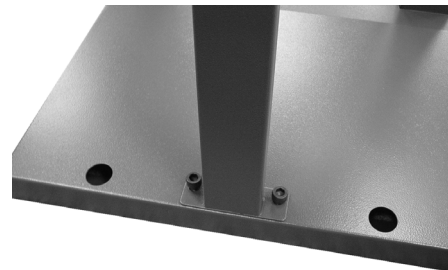
Once the T4000™ is installed in the wall, position it on the pedestal using the elongated holes so that the pedestal is as close to the backside of the wall as possible. Using the included hardware, secure the pedestal to the T4000™. **WARNING:** If the rear portion of the T4000™ is installed in a high risk security area, you may want to use a security head bolt, or apply a tack weld to the bolts attaching the T4000™ to the pedestal for added protection.



Next reattach the side braces. The steel side braces are designed to restrain horizontal movement. They should not be used as a load bearing bracket.

Step 7

For additional security, the pedestal base includes holes for anchors. Allow for additional anchor length if adjustable feet are used in the pedestal installation.

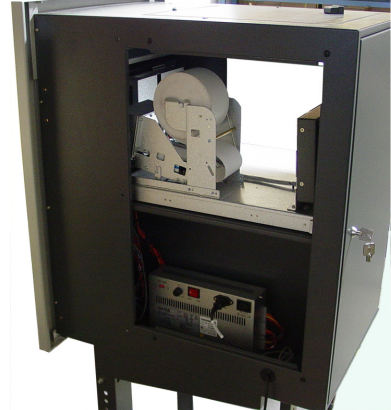
**END**

**PLEASE SEE END OF MANUAL FOR ADDITIONAL
INSTALLATION INSTRUCTIONS AND SPECS.**

2.1.3 HARDWARE SETUP

Step 1

Using the rectangular headed key (enclosed) remove the service panels from the sides of the T4000™. Depending on how thick the installation wall is, you may need to remove the side bracket(s) in order to access the side cover panels.



Step 2

Verify that the power supply voltage switch is set properly (115/230). The default setting should be 115V.

See the circled portion in the picture at right.



Step 3

Next open the rear door and remove the shipping screw from the slide tray. It is not necessary to replace this screw.



Step 4

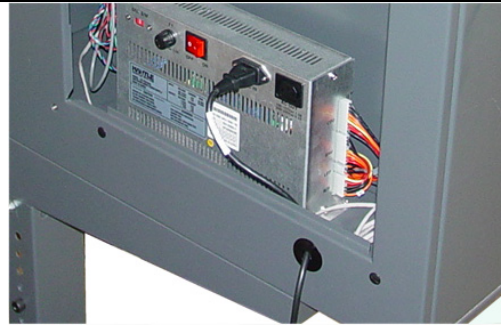
Press the green button on the rear of the slide tray and pull back to access the printer and LCD. Install the included paper roll and plastic spindle. The printer will only function with the outer side of the paper facing up. Feed the paper as shown in the picture. NOTE: The auto-paper feed motor will only activate if the power is on.

Test the printer to make sure the paper is installed correctly. To test printer functions, enter the Operator Function Menu, go to Reports and press Print All Setup. This will print an ATM configuration report.

**Step 5**

With the left side panel removed, route the AC power cable and phone cord through the hole in the side of the vault. If you'll be installing a network cable, do so now.

Plug the AC power cord into a grounded outlet. If the circuit used is being shared with other appliances, it might be necessary to isolate it from interference using an uninterruptible power supply (UPS). Use the same care to route the phone cord away from light fixtures or neon signs which can cause interference.

**Step 6**

Open the vault by pressing the combination into the keypad. See lock manual for default combination. After entering the combination, open the vault by turning the "T" handle to the left.

See section 4 for information on electronic lock operation.

**Step 7**

Install the cassette (enclosed) into the dispenser.

DO NOT force the cassette into the dispenser! Doing so may damage the cassette and/or dispenser.

Once verified that the cassette fits properly, close the vault and power on the T4000™.



Step 8

Using the red switch on the power supply, turn the power on and verify that all systems are operational. The exterior lights should turn on and as the programming initializes, the cash dispenser should cycle. If the ATM has not been programmed, proceed to Section 3 for programming instructions.

END

SECTION 3: PROGRAMMING

3.1 INITIAL SETUP

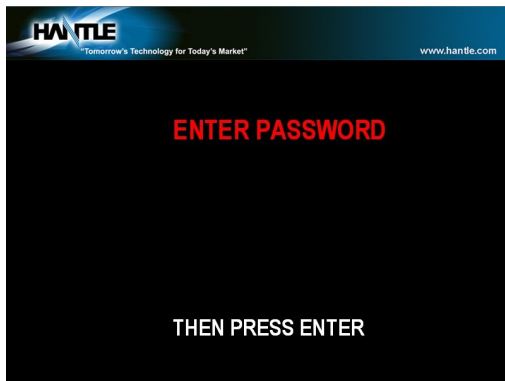
3.1.1 ACCESSING THE OPERATOR FUNCTION

Step 1

To access the Operator Menu, press the following keys in order [ENTER] – [CLEAR] – [CANCEL] – [1] – [2] – [3].

Note: The Operator Function menu can only be accessed when the machine is either in service (“insert your card” screen) or out of service. If the machine is attempting to connect to the host or initializing, you will not be able to use the key commands to access the Operator Function Menu.

If you have trouble accessing the Operator Menu, power off the ATM and then either open the vault door or remove the paper from the printer and power back on. This will force the ATM to the Operator Menu.



Step 2

Once you successfully completed the key combination, you will be prompted to enter a password. There are 3 levels of passwords.

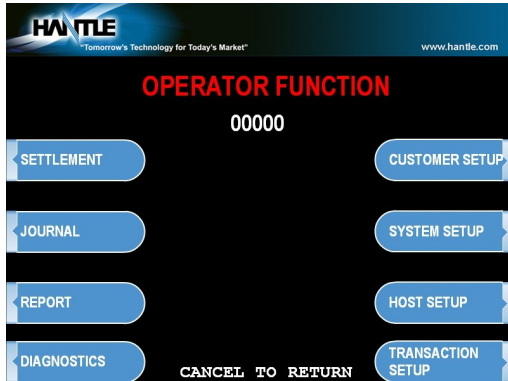
- Operator Password (allows access to basic menu structure)
- Service Password (allows access to basic and diagnostic menus)
- Master Password (allows access to all menus including setup parameters)

You must press the ENTER key after typing the password!

Passwords are very important to maintaining security for your ATM. Your dealer/distributor will provide you with default password information.

WARNING: Hantle USA, Inc. highly recommends changing your passwords from default as soon as possible. Keep all passwords safe and restrict access to non-authorized personnel.

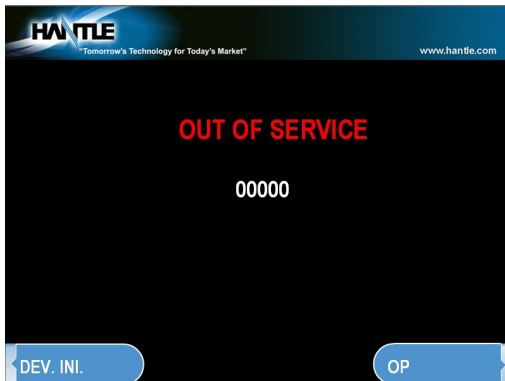
Passwords MUST be 6 digits in length, use of anything other than a 6 digit password may cause the passwords to revert back to factory default.

**Step 3**

Shown the left is the complete Operator Function menu, depending on which password you entered (operators, service, master) you may not see certain functions. For example, if you use an operator password you will not see the Host Setup button, as you will not have access to that menu.

END

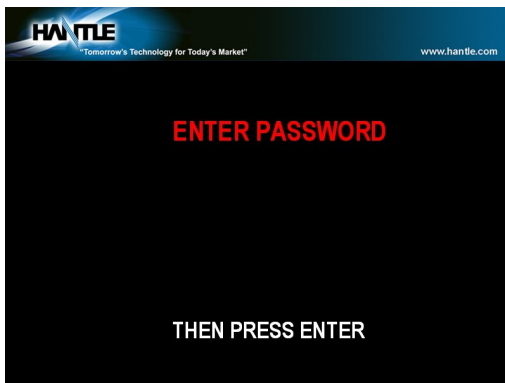
3.1.2 WHEN AN ERROR OCCURS



Step 1

When an error occurs, please press [ENTER] - [CLEAR] - [CANCEL] - [1] - [2] - [3].

NOTE: If the machine goes out of service, the error code will not always appear on the screen. If you do not see an error code, enter operator function and go to reports. Look in the error summary for error codes.

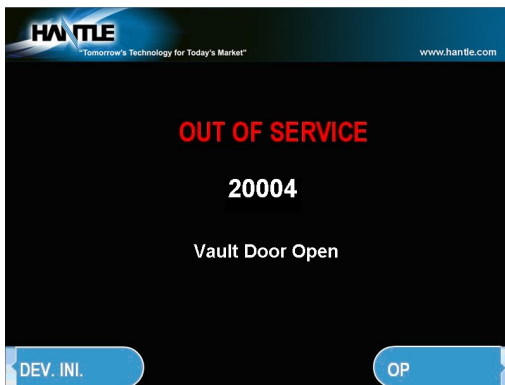


Step 2

"ENTER PASSWORD" will be displayed. Enter the Master, Service or Operator Password to continue.

Contact your distributor for default passwords.

Remember to press the ENTER key after typing password!



Step 3

When the screen is in current display, press "OP" key to access the "OPERATOR FUNCTION."

END

3.1.3 PROGRAMMING CONTROLS

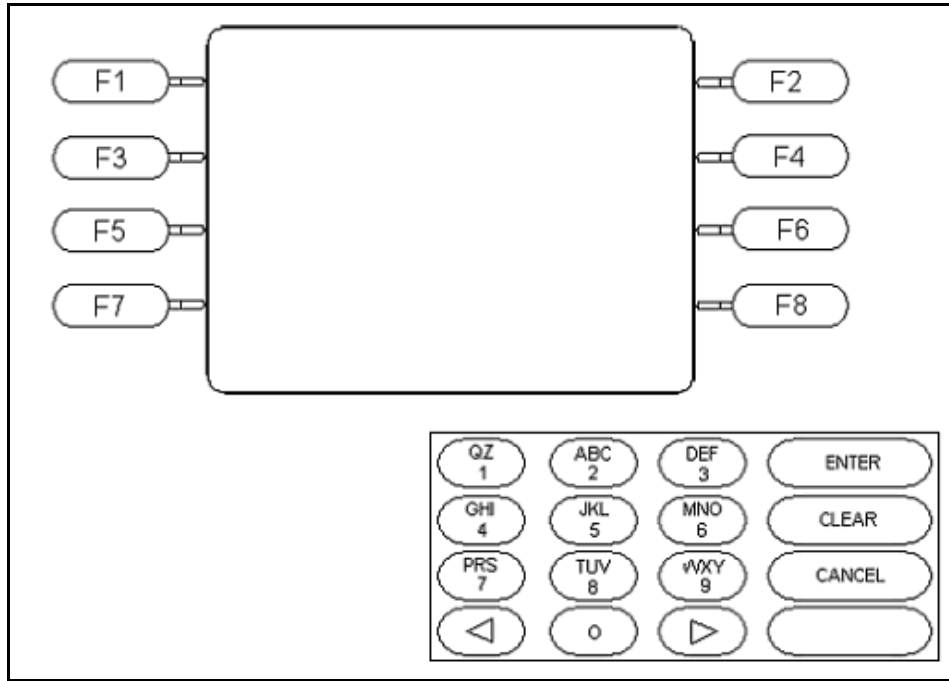


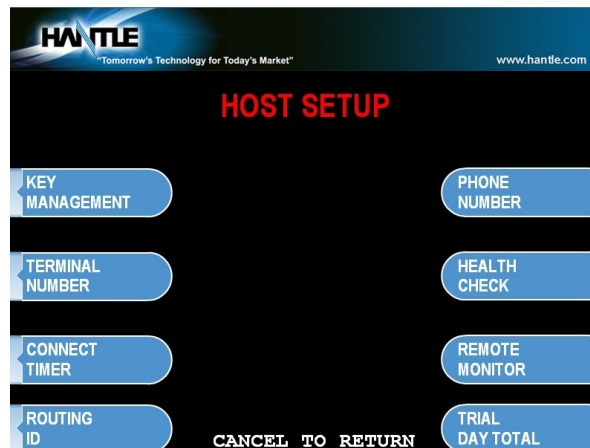
Fig. 1 Hantle T4000™ keypad and LCD display

Programming is done via the Keypad and LCD Function Keys. From within text entry screens, use the function keys to select from the three character maps below, including upper case, lower case and numeric + special characters.

Shift Status		0	1	2	3	4	5	6	7	8	9
F1 Alphabet Upper	Upper	+	Space	A	D	G	J	M	P	T	W
		-	Q	B	E	H	K	N	R	U	X
		=	Z	C	F	I	L	O	S	V	Y
F5 Alphabet Lower	Lower	+	Space	a	d	g	j	m	p	t	w
		-	q	b	e	h	k	n	r	u	x
		=	z	c	f	i	l	o	s	v	y
F3 Number Special	Number + Special	0	1	2	3	4	5	6	7	8	9
		([{	<	,	!	`	%	:	?
)]	}	>	.	\$	"	*	;	/

Fig. 2 Keypad Character Table

3.2 HOST SETUP

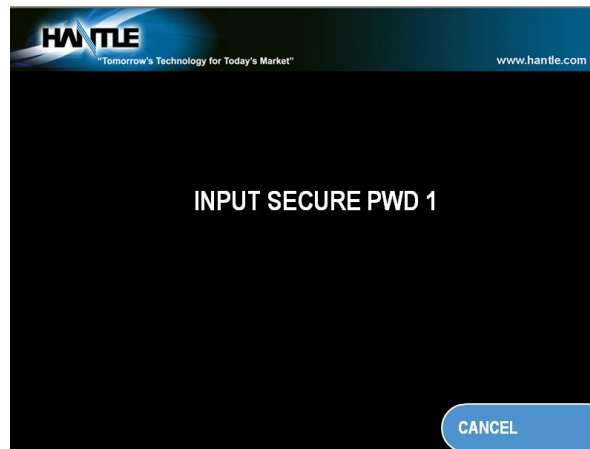


The Host Setup menu provides access to the parameters necessary to connect the ATM to the processor. Master Password is required to access most of these options; however Service password allows basic access for troubleshooting purposes.

3.2.1 KEY MANAGEMENT

Access to Key Management requires entering a "Secure Mode" which engages additional security measures (per VISA/PCI specification) to prevent Master Key tampering. Make note of these changes as it does affect how keys are entered.

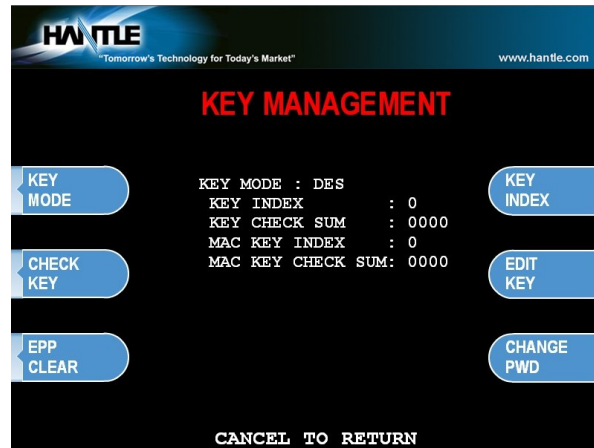
Entering Key Management requires two 6-digit passwords. By default these will be "000000" for part #1 and "000000" for part #2.



If a mistake is made entering the "Secure Mode" password, you will be prompted to wait 30 seconds to reattempt.

NOTE: In compliance with PCI specifications, **you must change the Secure Mode Passwords from default before any Master Keys can be entered.** After changing the Secure Mode Passwords, you must exit completely from the Operator Menu, and reboot the machine. After this step, you can enter Master Keys.

Successful entry of both passwords will grant access to the Key Management screen. From the moment the Key Management area is entered, a 5 minute timer begins. At the end of 5 minutes, regardless of what you are doing (entering a master key for example) the Key Management area times out and you will be taken back to the Host Setup menu.



KEY MODE

This option sets the type of master key you will be loading (TDES, DES, MAC etc.) Refer to Addendum C for Key Mode descriptions and instructions.

MASTER KEY INDEX

The ATM will hold up to 16 individual sets of Master Keys. Check with your processor to find if they are expected to be at a certain location. Most can be installed at index #0 or #1. The ATM will only use the key that the index is set to regardless of how many keys are installed. To set the index simply press the button labeled Master Key Index and then enter the number you want it set to (enter as a 2 digit number ... 00, 01, 02, 10, 11 etc.) press Enter when done. Press Check Master Key to see a list of currently installed keys. See Appendix C for detailed Master Key instructions.

CHECK MASTER KEY

This will show the list of available master keys and their appropriate checksums. The checksum is a 4 digit number calculated from the two 32-digit numbers of your master key that provides a means to verify the master key is correct. When your processor provides your Master Keys, they will also give you the 4 digit checksum. If after entering your Master Key this checksum does not match, try reentering your master keys or contact the processor.

EDIT MASTER KEY

This is where you enter your Master Keys (provided by your processor). After pressing Edit Master Key, you will be prompted to enter an index where you want this key stored. If you do not know which index to use, contact your dealer or processor. Generally, you should use index 0 or 1 unless otherwise instructed. When entering keys, you must put both halves of the key on the same index. See Appendix C for detailed Master Key entry instructions.

CHANGE PASSWORD

This allows you to set each part of the "Secure Mode" Password. As with the other passwords used in the T4000™, each must be a 6 digit number. If you change the password and cannot remember it, you must clear RAM on the pin pad to reset.

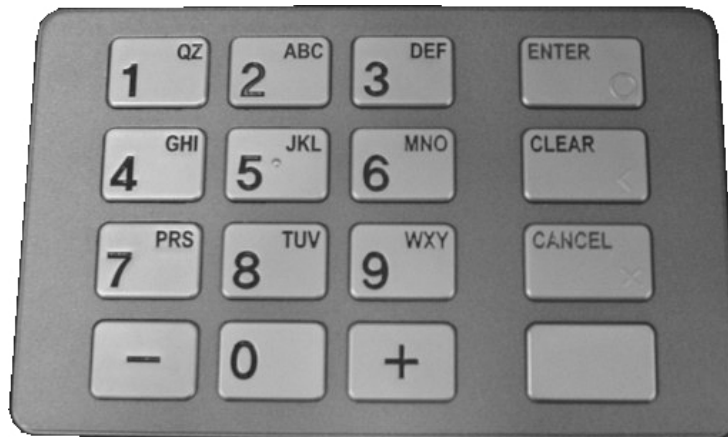
NOTE: In compliance with PCI specifications, you must change the Secure Mode Passwords from default before any Master Keys can be entered. After changing the Secure Mode Passwords, you must exit completely from the Operator Menu, and reboot the machine. After this step, you can enter Master Keys.

Entering Master Keys:

Use the chart below for entering Master Keys from the main pin pad.

Master Keys (or Key Management) cannot be entered from the optional Rear Service Panel. Please see Appendix for specific Master Key instructions.

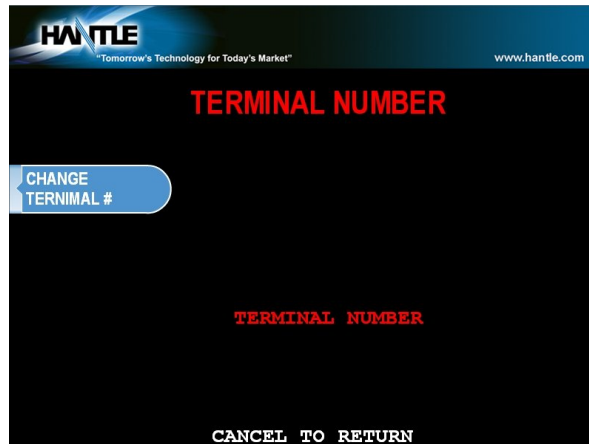
1	2	3	F
4	5	6	E
7	8	9	D
A	0	B	C



3.2.2 SET TERMINAL ID NUMBER

Step 1

From the Host Setup Menu, go to Terminal ID. Terminal ID number is provided by the processor and is individual for your ATM. It identifies your ATM on the network and any transactions done on your machine will be linked to that number. This number is obtained either through your dealer or processing company.



3.2.3 CONNECT TIMER

The connect timer is the setting which determines how long the machine will wait to connect when trying to dial into the processor. Default time is 60 seconds. Lowering this may improve connection speeds but at the risk of reliability.

3.2.4 SET ROUTING ID NUMBER

From the Host Setup Menu, go to Routing ID. The Routing ID is unique to each processor and identifies the machine by processor. This number is obtained either through your dealer or processing company.

NOTE: If using Standard 3 (Extended Messaging) Routing ID becomes COMS ID

3.2.5 SET HOST TELEPHONE NUMBER

Step 1

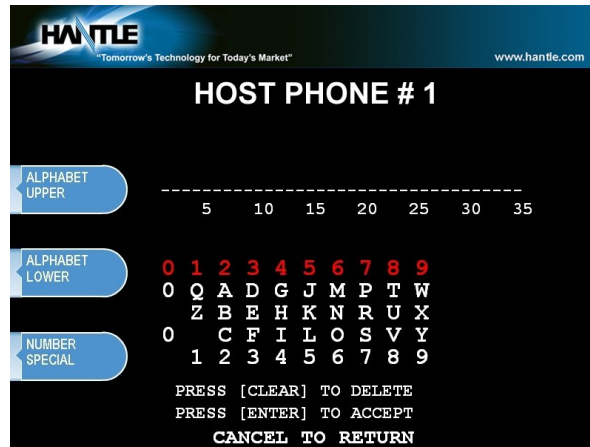
From the Host Setup Menu, go to Telephone Number.

Step 2

You can enter a Primary (Host Phone 1) and a Secondary (Host Phone 2) for the machine to connect to the processor. These phone numbers are available from your dealer or the processor (you can also reference the quick installation guide enclosed with this ATM for numbers for the common processors).

Step 3

Once you have selected Host Phone #1 or Host Phone #2 you will be prompted with the following screen. Using the numbers on the keypad press the first number of your phone number.

**Step 4**

Hantle always recommends using a dedicated, data-quality phone line for all ATM installations, however if you are using a phone line that is dialing out through a PBX type system (where you dial a number for an outside line), then you may insert commas (,) to create a pause between digits. Note that commas will not prevent problems found when voice mail notification occurs on a phone line.

For example if you have to dial a 9 to get an outside line try the following:
 9,,18005551212
 (the 800 number being an example)

NOTE: Do not add dashes or invalid characters to the phone number. Entering anything other than a number or a comma in the host phone number field will cause the ATM not to dial out. Make sure that Zero's and 'O's' are identified properly.

END

3.2.6 HEALTH CHECK MESSAGE

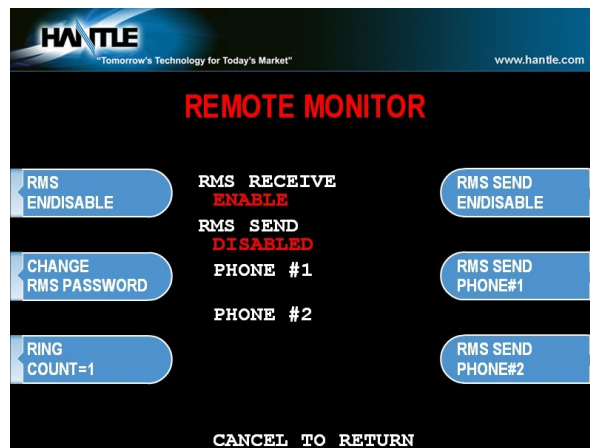
Health Check is an option that will send a system status signal to your processor at a set interval. Check with your dealer or processor to determine if they are prepared to receive this type of messaging.

To enable Health Check simply access the menu from Host Setup. Use the Host Send button to enable or disable the feature and the Message Send Interval button to set how often the machine will broadcast its status (in hours).

NOTE: When using Standard 1 processing mode, an option for 'Extended Health Check' may appear. This option is for 4 cassette dispensers and is not used in the T4000™

3.2.7 REMOTE MONITOR

Remote Monitoring is the ability to dial into your ATM and send or retrieve information using Hantle Remote Management Software (RMS).



RMS EN/DISABLE

This will allow the ATM to be monitored remotely.

Enable The ATM will answer incoming RMS calls.
 Disable The ATM will not answer any incoming calls.

RMS SEND

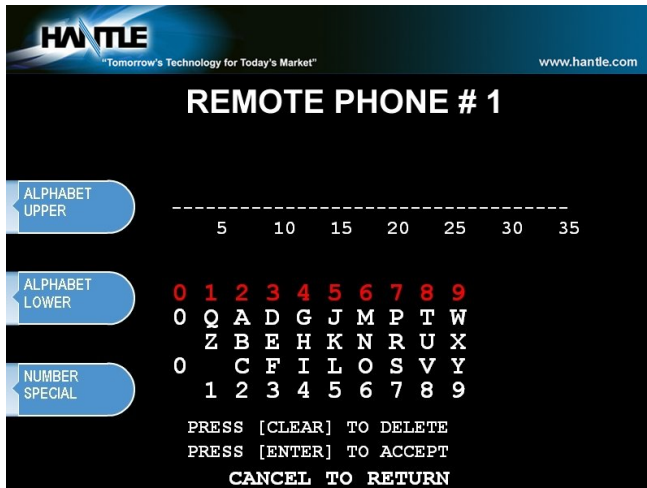
This feature causes the ATM to dial out to a computer running RMS software to report a malfunction, a fatal error or an out of service condition. Any time the ATM goes out of service for longer than 4 minutes, it will call the number programmed at Remote Phone #1 (and then Remote Phone #2 if Remote #1 is busy). It will attempt this call 3 times. In order to use this feature you MUST have a PC (with a modem and a dedicated phone line) running RMS software available 24 hours a day.

Enable The ATM will dial out to report out of service condition.
 Disable The ATM will NOT dial out to report out of service condition.

RMS PASSWORD

Remote monitoring is protected by a password that is checked when incoming calls from RMS occur. If the password does not match from an incoming RMS call, the call will be disconnected. The default password for RMS access is 333333. To change the password, press the password button and you will be prompted to enter your Master password. After entering your Master password, you will be prompted to enter the new RMS password (must be 6 digits) and then enter it again for verification. If you ever forget the RMS password, press password and follow the procedure again.

REMOTE PHONE #1, #2



This is the number the ATM will call if there is an out of service condition. Press the button for either number and enter the number for the computer you want the ATM to call.

Using the numbers on the keypad press the first number of your phone number. You can use the <, > keys on the keypad to move back and forth (to correct any mistakes, or edit existing numbers).

RING COUNT

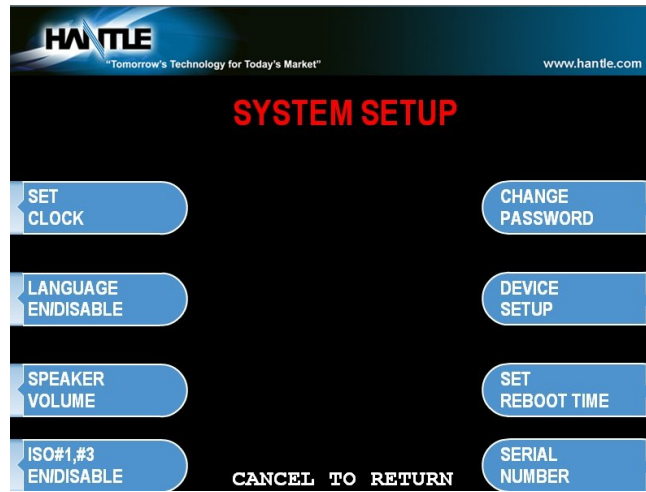
This setting determines how many rings will elapse before the ATM will answer the phone. While this can be used in situations where the ATM phone line is shared with an additional device (like a fax or business phone) it's important to note that setting this value higher than 4 or 5 may result in monitoring software being unable to connect.

3.2.8 TRIAL DAY TOTAL

Trial Day Total feature allows the ATM to complete a Day Total operation (without actually closing out the machine) at a predetermined time each day. This is useful if you are doing accounting of your ATM on a day-to-day basis. Your processor cuts off its transactions each day at a set time. By enabling Trial Day Total at the same time, your day's balance should match the host. This information will appear as a journal record, so you will need to access your journal to print or view the totals. Your dealer or processor can provide you with the appropriate cut off time.

Trial Day Total Set	Enables or Disables the function
Change Time	Sets the time for the ATM to total itself

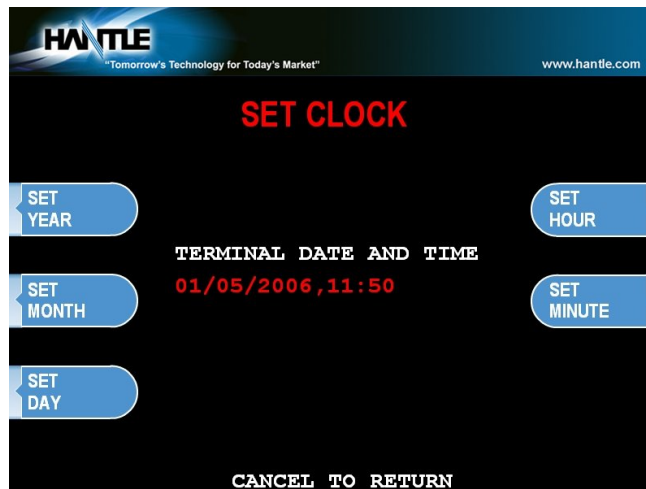
3.3 THE SYSTEM SETUP MENU



3.3.1 SET CLOCK

The Set Clock menu allows you to set the clock built into the ATM to the appropriate date and time. You should set this for local time in the area the machine is to be installed. Note that with each transaction you will also see a "Host" time, this is the local time for the processor and may be different from local time at the ATM. To set the clock, simply press the Set Clock button and press the key corresponding to the function you want to set (month, day, year, etc.)

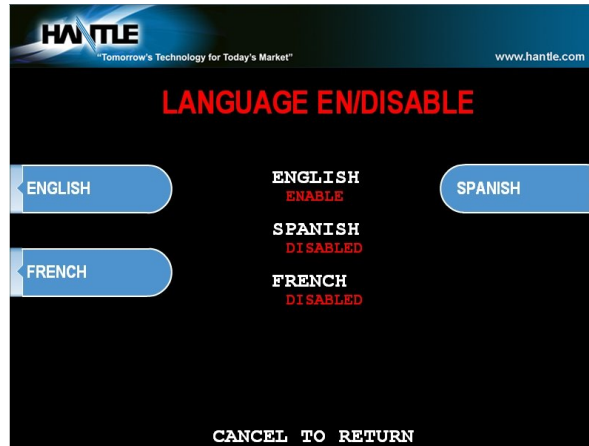
NOTE: The ATM will not automatically adjust for daylight savings time. You must set this manually if you wish it to change.



3.3.2 OPTIONAL LANGUAGES

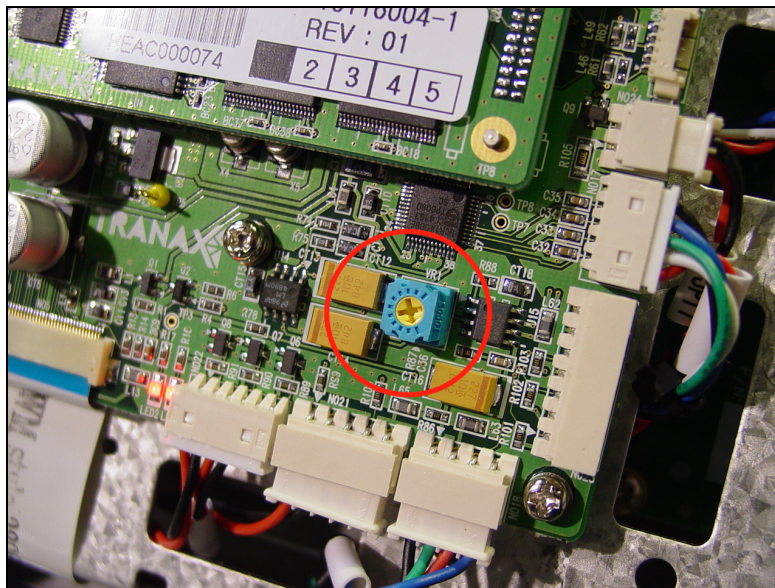
The Hantle T4000™ ATM supports 3 on screen languages: English, French & Spanish. The optional languages will display on the welcome screen, the customer will be prompted to choose a language to be used for the rest of that transaction.

NOTE: The optional languages are displayed on screen only and do not print on the receipt or journal. Receipts, journals and operator menus are always in English. To enable or disable a language, simply press the button next to the language you wish to change.



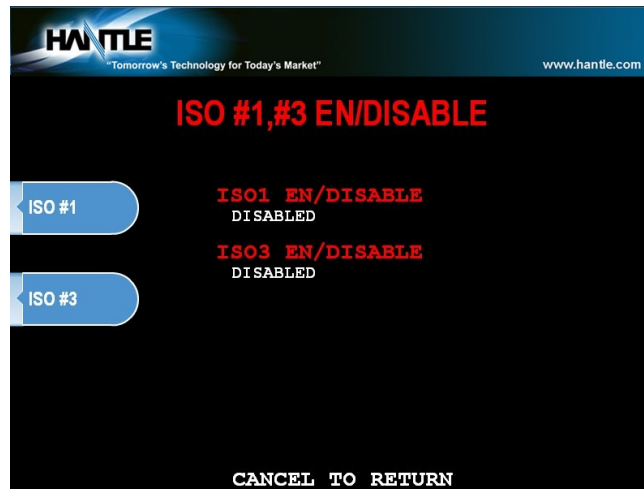
3.3.3 SPEAKER VOLUME

The T4000™ speaker volume is adjusted via a screw located on bottom right corner on the main circuit board (located on the back side of the LCD panel) insert a small screwdriver into the volume adjustment and turn left (softer) or right (louder).



3.3.4 ISO 1, 3 EN/DISABLE

The ISO Tracks are the three tracks available for the card swipe head to read. The ATM is already defaulted to read from Track #2 (which is why it's not shown). This parameter should not be changed. Changing the ISO tracks can cause the ATM to not read cards properly.



3.3.5 CHANGE PASSWORDS

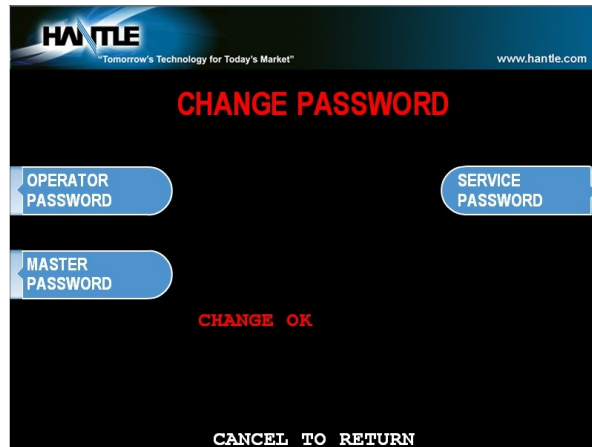
The ATM uses three passwords to provide security to the operator menu system. These are Operator, Service and Master.

- Operator Password (allows access to basic menu structure)
- Service Password (allows access to basic and diagnostic menus)
- Master Password (allows access to all menus including setup parameters)

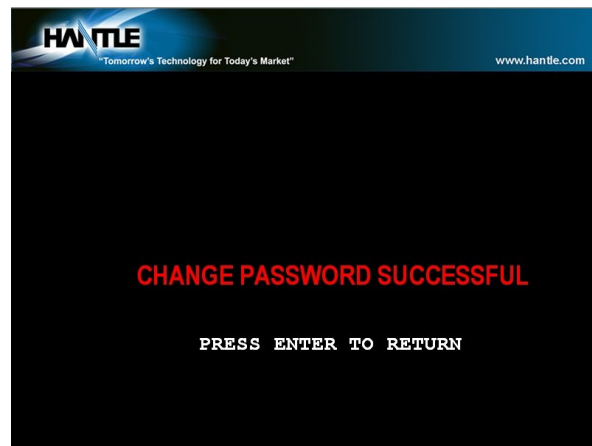
The operator password can be changed by anyone with the current operator password. The service and operator passwords can be changed by anyone with the service password. The master password can only be changed by someone with the current master password. Any password can be changed using the master password.

For example, if you have lost the operator or service password, you can use your master password to change them. Simply enter the master password when it requests the operator or service password and then enter the new password.

You are required to change the master password from default before the ATM can go in service.



To change a password, press the button for the appropriate password. You will be prompted to enter the new password and then enter it a second time to verify. If you forget your password please contact your dealer or distributor for service.



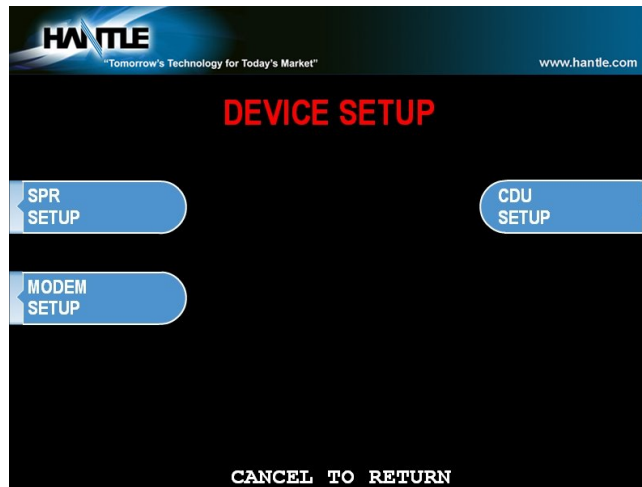
NOTE: All passwords MUST be 6 digits. If you use a password that is less than 6 digits, the passwords may default back to factory if the machine is power cycled. If your customer wants a 4 or 5 digit password, add zeros to the end to make it 6 digits.

WARNING: The ATM will NOT go into service with the default master password. You must change the master password from default! If you attempt to go in service with the default master password, you will receive a **F0016** Error, which will notify you that the master password has not been changed.

It is critical that you do not set the same password for each of the three levels. If you duplicate the password, the lower level permissions will be the default. For example, if the Operator Password is set to 123456 and you also set the Master Password to 123456, then when you log in with that password, you'll only have access to Operator level commands. In this example, you'd have to change the Operator Password to something else, and then 123456 would then allow you to log in as Master. If you forget the passwords, you'll need to reload the AP software to reset.

3.3.6 DEVICE SETUP

The Device Setup menu provides options to adjust parameters of the various peripherals. Under normal circumstances you should not need to make changes to these parameters. The default settings are optimized for your particular machine. Hantle recommends only using these tools under the direction of an Authorized Service Provider (ASP) or Hantle Technical Support.



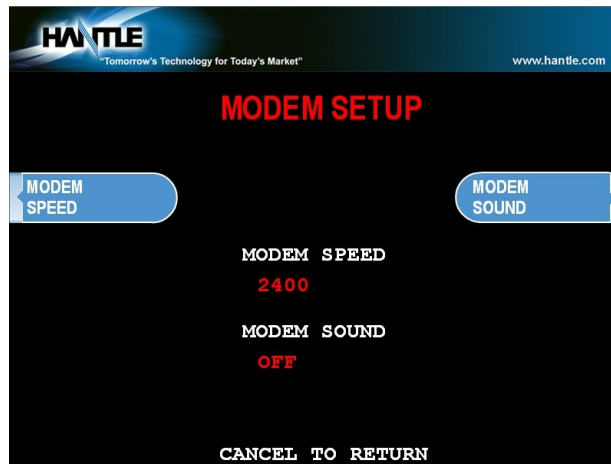
3.3.6.1 SPR SETUP

The SPR Setup allows you to set the maximum column width for the receipt printer. Default is 40 characters.



3.3.6.2 MODEM SETUP

The Hantle T4000™ series use an onboard 56K modem. The modem is preset at the factory for optimal use. Changing these settings can cause your machine to not communicate or may slow communication speeds. Do not make changes to the modem settings.



MODEM SPEED

This sets the speed at which the modem will begin communication with the host. The default speed is 2400. Most processors are only using 2400 baud modems, so setting this value higher may not increase modem performance.

Available settings : 1200, 2400

MODEM SOUND

Although the option exists in the menu, the ability for the modem to play through the speakers is disabled on this machine regardless of the setting.

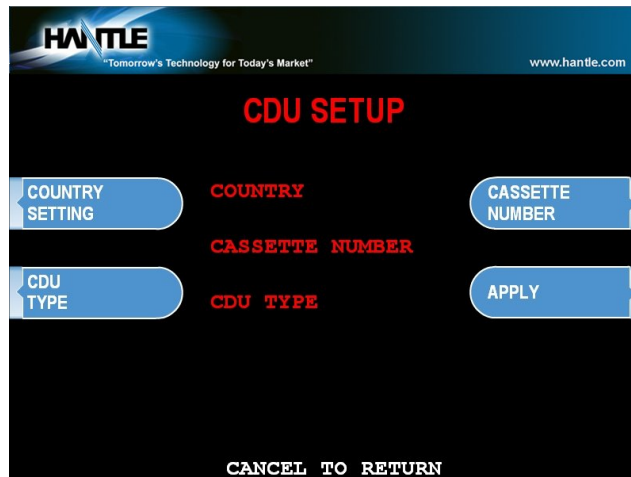
Available setting: OFF , ON

3.3.6.3 MCR (Card Reader) SETUP

The Hantle T4000™ can be equipped with an optional EMV compliant card reader. If the setting is not correct, the card reader will not work at all. After setting the MCR to the appropriate type reader, back out of the menus and then reboot the machine for the changes to take effect. Since these different card readers use alternate ways to communicate, it's necessary to reboot.

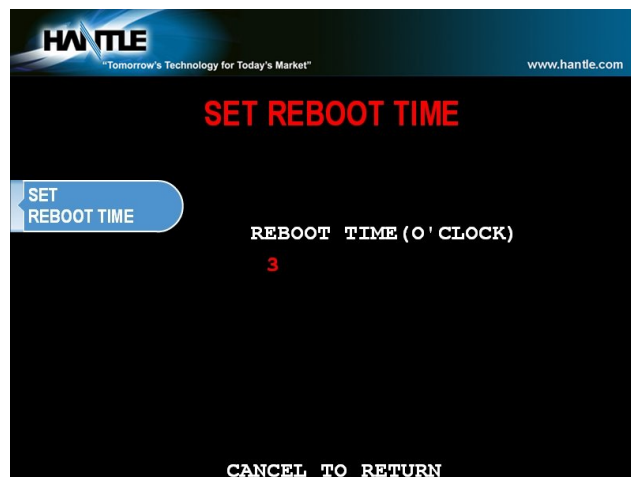
3.3.6.4 CDU SETUP

The CDU (Cash Dispensing Unit) or Dispenser contains programming relative to its application and country of destination. This programming does not need to be altered, however in the event that the dispenser loses its factory programming the CDU Setup application can correct any problems. **NOTE:** Incorrect programming of the dispenser will cause the machine to go out of service.



3.3.7 SET REBOOT TIME

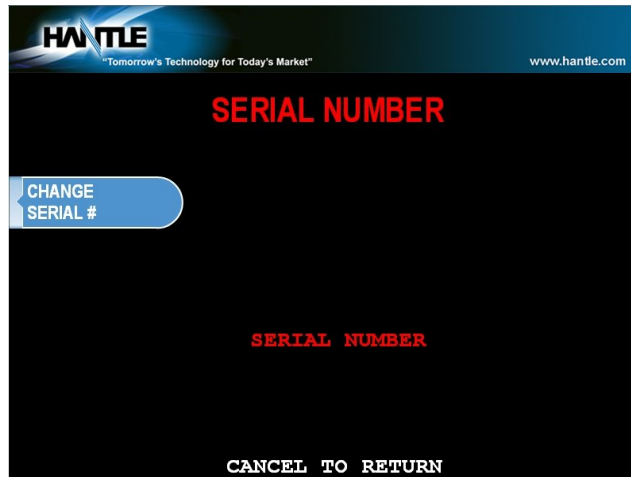
The T4000™ contains a feature which automatically reboots the machine at a 24 hour interval. By default this will occur at 03:00 am. This adjustable in 1 hour increments.



3.3.8 SERIAL NUMBER

The serial number is a unique number programmed into your machine at Hantle. It not only identifies your machine for warranty purposes, but also for remote monitoring using TranRMS. The first 4 digits refer to the model type, and the last 6 is production cycle. By default this number is programmed from the factory and we do not recommend changing it. However if you need to clear NVRAM for any purpose this number will be deleted. If you wish to re-enter the serial number, you'll find it on the sticker located inside of the upper cabinet.

Keeping the serial number in the proper format will prevent problems when trying to connect for remote management.



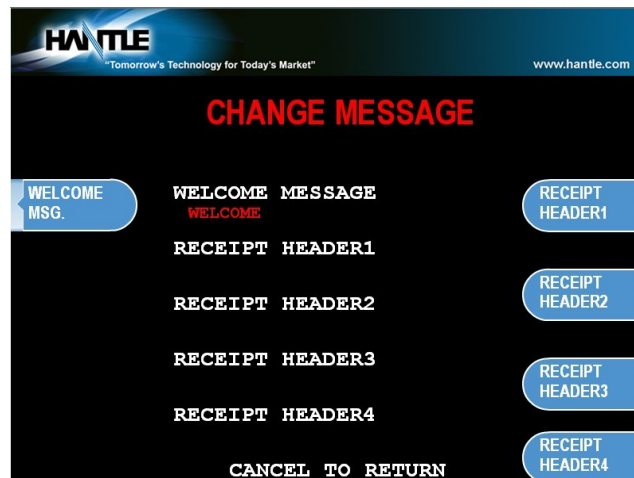
3.4 CUSTOMER SETUP MENU

The Customer Setup menu controls surcharge information, BIN lists, receipt options, advertisements and keypad lighting.

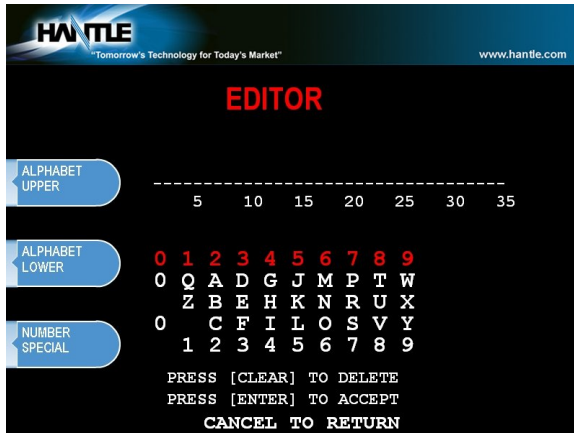


3.4.1 CHANGE MESSAGE

The Messaging options for the ATM are a welcome message and a receipt header message. The Welcome message allows line of 35 characters, which will appear at the top of the main screen (above the center graphic). The receipt header is up to 4 lines of 25 characters, which will appear at the top of each receipt.

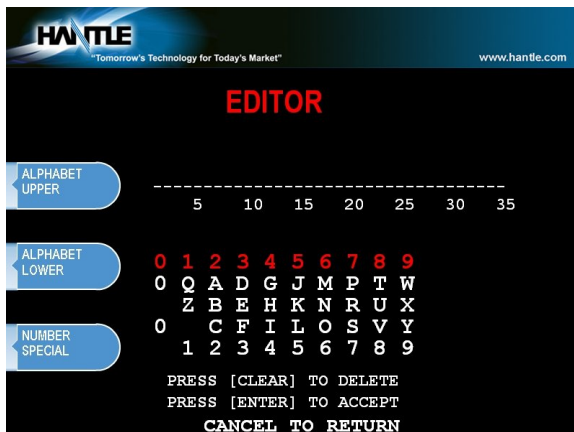


WELCOME MESSAGE



Once you have selected Welcome Message from the Change Message Menu, you will be prompted with the following screen.

RECEIPT HEADER

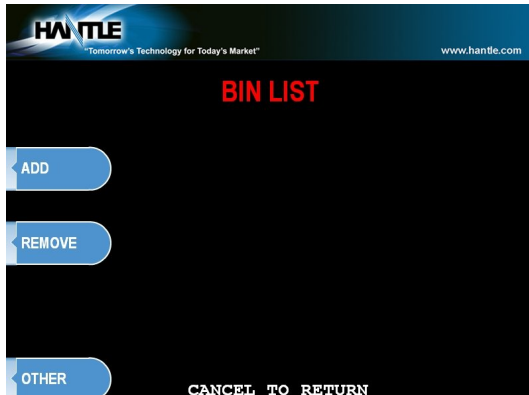


Once you have selected Receipt Header from the Change Message Menu, you will be prompted with the following screen. See the above instructions for navigating this menu.

3.4.2 BIN LISTS

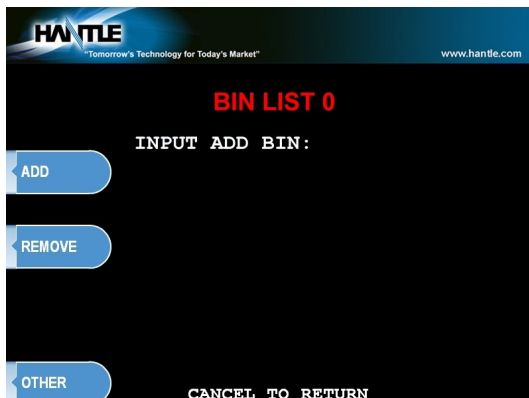
BIN numbers are card numbers that you have preset with your processor to not be surcharged. You must set this up with your processor, who will then give you numbers to enter in the list. These numbers will reference cards that you wish to not be charged a surcharge for transactions. The ATM will hold up to 60 numbers, programmed into the machine directly.

If you need more BIN numbers, there is a file that can be created to load several thousand more numbers. See Appendix for Extra-BIN instructions.



Step 1

To enter the BIN numbers select BIN List from the Customer Setup menu. The list can hold 2 banks of 30 numbers for a total of 60. Bank 0 and Bank 1. Press the OTHER button to switch between the banks.



Step 2

To add a number, press ADD and input the BIN number with the keypad. To remove, press REMOVE and type in the BIN number you wish to delete from the list.

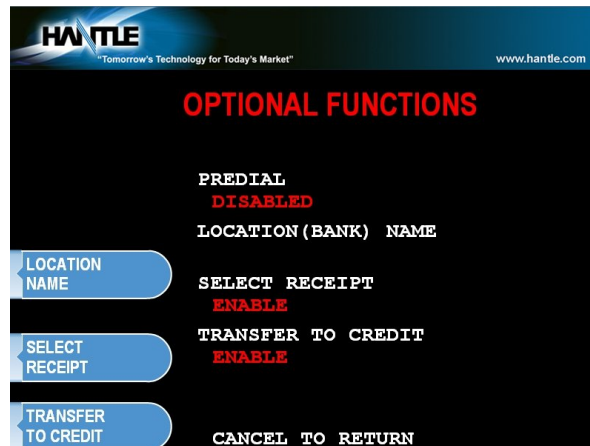
Press OTHER to switch between Bank 0 and Bank 1.

Step 3

If you wish to view the contents of the BIN list, use the Print All Setup report. From the Operator Function Menu, go to Reports, then Print All Setup. Any numbers added to the BIN list will be visible from this report. **NOTE:** Numbers loaded via the extra BIN file will not display on the Print Setup or any other report.

END

3.4.3 OPTIONAL FEATURES



The T4000™ ATM offers several optional functions to improve performance and keep the ATM functional in the event of a paper problem (jam, out of paper etc.)

LOCATION NAME

Adding a name to this location will print the name entered onto the journal records and print all setup. This is purely a convenience option and is not required.

SELECT RECEIPT

This feature allows the ATM to complete transactions even though it may not be able to dispense a receipt. If the ATM experiences a paper jam, or runs out of paper, the customer will be asked if they would like to complete the transaction even though they will not receive a receipt. If the customer answers Yes, the transaction will continue. Following the transaction the customer's information (what would have appeared on the receipt) will display on the screen. The ATM will continue to operate without use of the printer until someone accesses the Operator Function menu. At that time the error must be corrected before the ATM will go back into service.

To enable the option, press Select Receipt, the lower portion of the screen will display the options status.

TRANSFER TO CREDIT

Some networks do not allow customers to transfer funds to or from their credit cards. By enabling / disabling this option you will add or remove the option button from the customer menus. Check with your Distributor / Processor as to whether or not they support fund transfer to or from credit cards. NOTE: If your network does not support such transfers and you leave the option enabled, the customer can choose it from the menu however the network will not authorize the transaction.

CHECK BALANCE

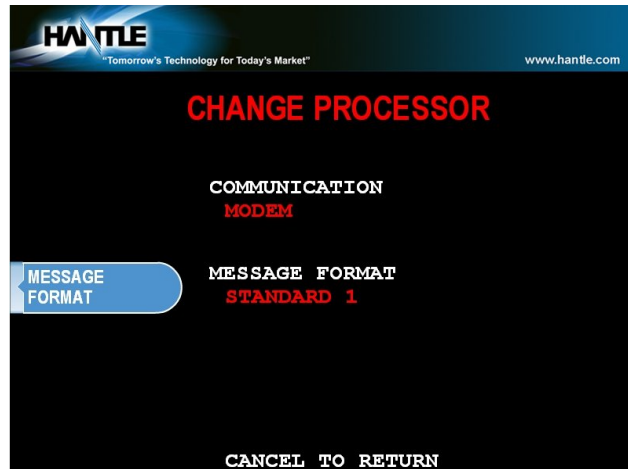
Enabling this option will ask each customer if they would like to check their balance before each transaction.

3.4.4 CHANGE PROCESSOR

Host Processor selection changes the communications protocol to specifically match your particular processor. In most cases this is set at the factory when your machine is ordered, however in the event that the machine needs to be reprogrammed for a new processor, it may be necessary to change the processor mode.

NOTE: You do NOT need to clear NVRAM to access the Change Processor menu

To access the Host Processor mode, enter the Customer Setup menu using the Master Password.



Communication modes are:

Modem – dial up (uses on board modem)

TCP/IP – Standard TCP/IP
 VISA FRAME TCPIP
 ACK CONTROLLED TCPIP
 SSL PASS THROUGH
 SSL LENGTH PREFIX W/O ETX
 SSL LENGTH PREFIX WITH ETX

**** See page 3.31 for TCP/IP Setup Instructions ****

Use the Message Format button to select the appropriate Host Processing Mode. Available formats are:

Standard 1 (Hantle Spec)
 Standard 2 (CSP200 Emulation)
 Standard 3 (Extended Message)
 EPS

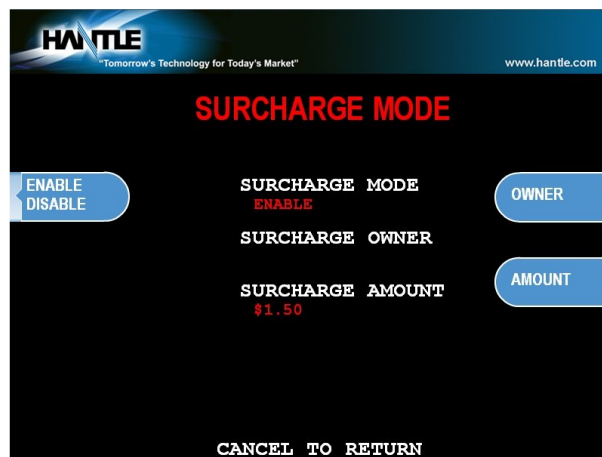
If Standard 3 is selected, you'll see a Standard 3 Options button which will give access to the Extended Messaging options.

Contact your distributor or processor for which mode is appropriate.

3.4.5 SURCHARGE MODE

The Surcharge menu displays the current rate at which customers are charged per transaction, the person or account that the surcharge funds are sent to and whether or not the option to surcharge is enabled or disabled. The information programmed here must match the information given to the processor at the time the account was created. When the ATM dials into the processor for configuration requests, it compares the information the processor has on file with what is programmed in this section. In some cases, if there is a discrepancy, the ATM will automatically update its surcharge information based on the processors records. For example: If your ATM is set with the processor to charge \$1.50 per transaction and you manually enter \$2.00 into the surcharge amount, as soon as the machine connects to the processor it will revert back to \$1.50. You must contact the processor if you wish to make changes to the surcharge information.

Note that percentage surcharge (if enabled) will not be overridden by the host, so be careful when setting percentage values. (see page 3.26)



To set the surcharge parameters begin by entering the Surcharge Mode menu from the Customer Setup menu. The bottom of the screen displays the current status of each surcharge parameter.

DISABLE/ENABLE

This button toggles the surcharge option on and off.

AMOUNT

To set the surcharge amount, press the amount button and type the dollar amount using the main keypad. Next set the decimal point using the Enter key on the keypad. Then type the cents using the keypad and finally press Enter to finish.

PERCENT

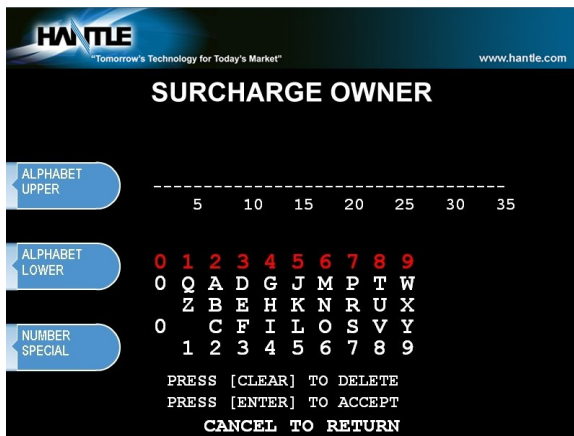
This allows you to set the surcharge amount as a percentage of the overall amount the customer is withdrawing per transaction. Check with your processor to make sure that they support this function.

WARNING: Setting the surcharge 'Use' mode to 'Lesser Amount' can cause the ATM to no longer surcharge the customer.

Example: Surcharge = \$2.00 or 0%, with Use set to 'Lesser Amount' the lesser amount would be 0% or \$0.00.

Be careful when setting the Percentage Surcharge values.

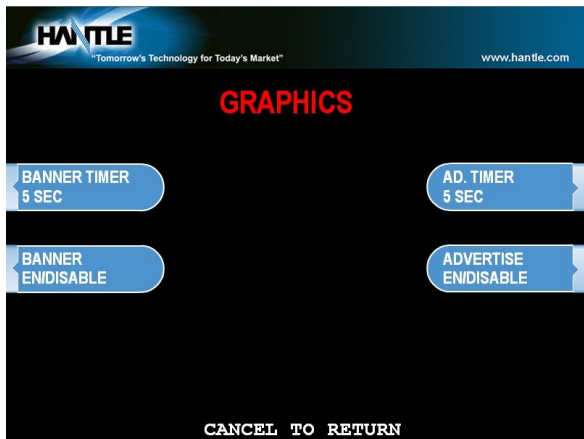
SURCHARGE OWNER



The surcharge owner can be up to 25 characters long. This owner name will appear at the bottom of each transaction receipt.

3.4.6 GRAPHICS

The Hantle T4000™ is capable of displaying up to 8 individual graphic screens and 8 individual banner graphics. These graphic files are created on a computer and then downloaded into the ATM either directly at the ATM using a SDRAM card or by using the Hantle Remote Management Software (TranRMS). When the advertisements are loaded and enabled they will rotate in order while the ATM is waiting for a transaction and also while the transaction is processing. There is a timer, which allows you to set a delay before switching to the next graphic screen. Please see Appendix D at the end of this manual for detailed instructions for creating advertisements.



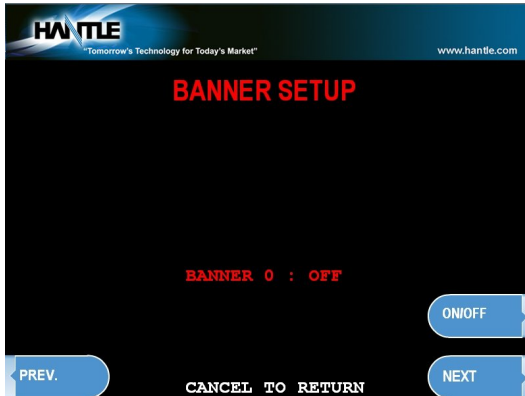
Step 1

Enter the Graphics menu and choose "Advertise" enable or disable each loaded graphic.



In this example, the "banner" is the strip at the top of the screen.

"Advertise" refers to the graphic which appears in the center portion of the screen.

**Step 2**

Choose Banner or Advertise from the main Graphics menu and you'll be able to cycle through the available graphics using the Next / Prev. buttons.

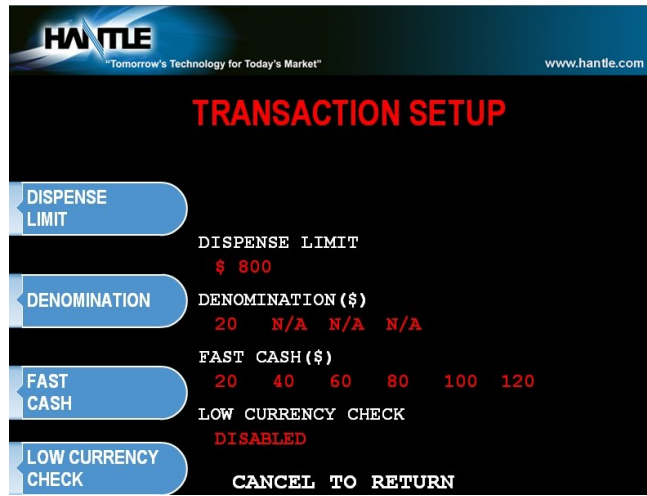
While viewing a graphic, press the On/Off button to enable or disable that image.

**Step 3**

Only Banner or Advertise graphics which have been enabled will display to the customer using the machine.

END

3.5 TRANSACTION SETUP



3.5.1 DISPENSE LIMIT

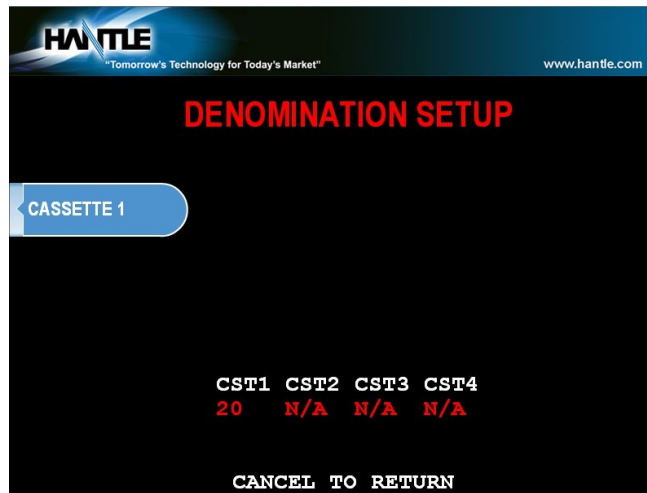
The dispense limit is the maximum amount of money a customer can withdraw in a single transaction. The ATM will dispense a maximum of 40 notes per transaction. So the dispense limit can be a maximum of 40 times the denomination of notes your using.

For example:

- If you are dispensing \$10 bills the maximum dispense limit is \$400
- If you are dispensing \$20 bills the maximum dispense limit is \$800
- Maximum is \$900 (using either \$50 or \$100 bills)

To set the dispense limit, press the Dispense limit button and then enter the number using the keys on the main keypad. Press Enter key to set the value.

3.5.2 DENOMINATION



The Denomination is the type of bill that each cassette will be dispensing. The ATM offers a second cassette as an option. This second cassette can be programmed to dispense notes, it can also dispense a preset number of bill sized coupons with each transaction and finally it can dispense a "value coupon", where you would set the value of the coupon and the customer could purchase this using their card.

WARNING: Any change to the denomination will cause all master keys to be deleted from the EPP keypad. If you attempt to enter the denomination setup menu, you will be prompted and warned that continuing will cause all master keys to be erased. The purpose of this is to prevent unauthorized changes to this critical setting.

When programming the ATM, make sure to make any changes to the denomination setting BEFORE you program master keys. Once keys are erased, they cannot be recovered. New master keys will have to be loaded.

When programming the ATM, make sure to make any changes to the denomination setting BEFORE you program master keys.

Once keys are erased, they cannot be recovered. New master keys will have to be loaded.

To set denomination on the first cassette, press the First CST Denomination button and then using the main keypad enter the type of bill. Options are \$1, \$5, \$10, \$50 and \$100.

3.5.3 FAST CASH

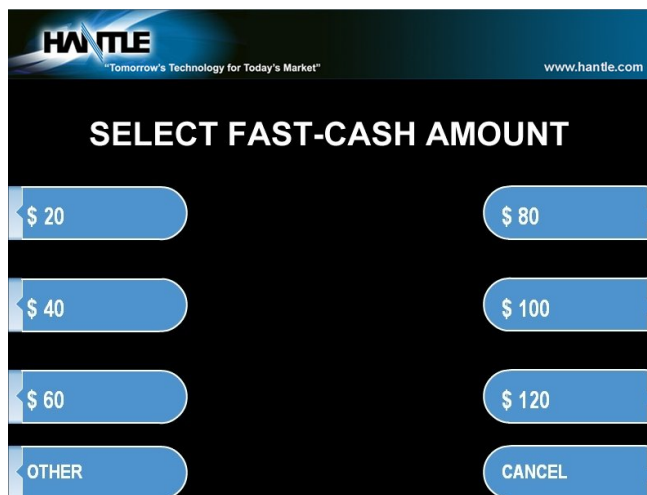
Fast Cash amounts are presented to the customer if they choose a Withdrawal transaction. These amounts appear on screen as an easy method of selecting how much cash they wish to withdraw for that transaction. The amounts must be multipliers of the denomination amount.

For Example:

If your dispensing \$10 bills then you can use \$10, \$20, \$30, \$40, \$50 etc.

If your dispensing \$20 bills then you can use \$20, \$40, \$60, \$80, \$100 etc.

To set the fast cash amounts, select Fast cash from the Transaction Setup menu and then choose from the 6 possible keys to program. Select a button and then enter the value from the main keypad. Press Enter to confirm the setting.



3.6 TCP/IP SETUP

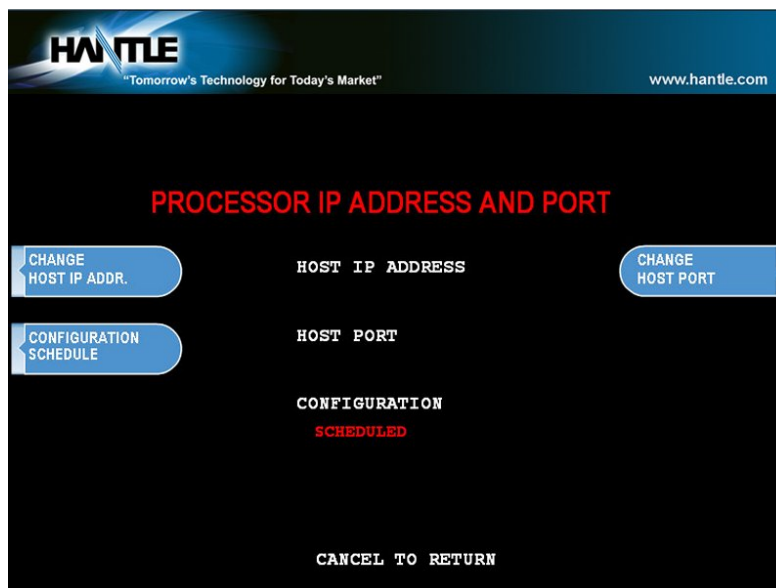
TCP/IP Setup is done in several menus. First you need to specify TCPIP from the Communications Menu: [See page 3.24] Check with your processor for which protocol they are expecting.

Once you change from Modem, to one of the TCP/IP settings, several other menus change to support various network functions.

Operator Function Menu → Host Setup → Processor IP and Address Port

Here you will set the Host Processor IP (or URL) address and port. For some processors an IP address (example = 121.212.1.21) is used and for others you'll enter a URL address (example = trans.mybank.processor).

In addition to the address, there will also be a port setting (example = 6543)

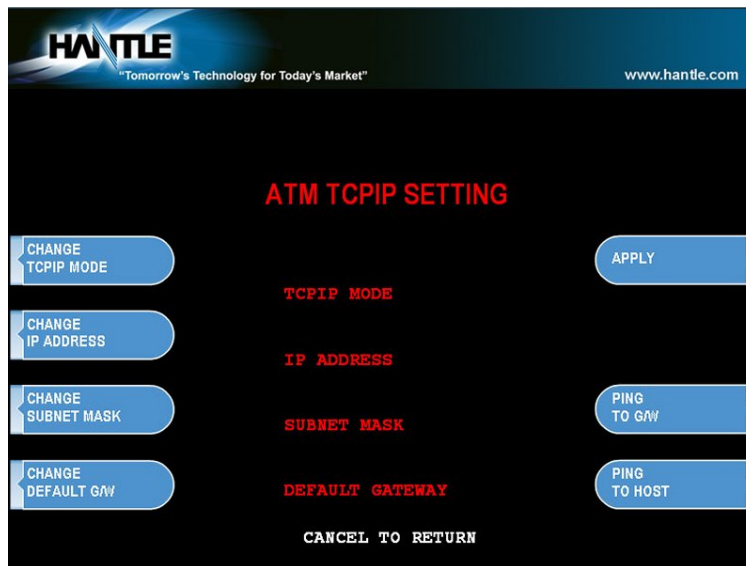


Configuration Schedule allows you to force the ATM to update configuration with the host upon boot up. You might use this command if the terminal gets consistent Key Errors and you want to force download of a new working key.

The ATM IP information is set using the menu found at:

Operator Function Menu → System Setup → Device Setup → ATM TCP Setup

This menu is only active if you have the communication mode set to TCP
[See page 3.24]



These settings will be dependant on the network connection available at the location where the ATM is deployed. It may be necessary to contact the ISP or Network provider for the location to determine how this should be set.

TCPIP Mode: DHCP or STATIC IP

NOTE: a Static IP address will be required if you intend to use TranRMS monitoring software with this ATM.

Change IP Address: Enter the ATM IP address here (for static IP) or this field will automatically populate if DHCP is used to obtain an IP automatically.

Subnet Mask and Gateway: These values will be provided by your ISP/Network Provider and refer to the Router that you'll be connecting to.

Ping to Gateway: This is a test which will 'ping' the Router and verify communication between the ATM and the network. If this test fails, then the ATM will not reach the host.

Ping to Host: This test attempts to verify communication with the IP address or URL that is programmed in the 'Processor IP Address' menu. Note that most processors or switches do not allow 'pinging' for security reasons.

SECTION 4: OPERATION

4.1 OPENING AND CLOSING

4.1.1 Opening the Vault Door



Step 1

The T 000™ has a hinged rear access door, and a left and right service panel. All of these panels are opened using the rectangular head key included with the machine. To open the vault, use the key to open the rear access door.



Step 2



With the rear access door open, the vault can now be opened. Enter the combination on the keypad of the lock (See lock manual for default combination)

Once the combination is successfully entered, turn the T-handle to the left (counter clockwise) to open the vault door.

Step 3

With the vault door open, you have access to the cash dispenser, reject bin and cassette.

Grab the green handle to slide out the dispenser. Note the vault door sensor switch is located along the front edge of the slide tray.

END

4.1.2 Closing the Vault Door



Step 1

Closing is simply a reverse of the previous procedure. If the vault T-handle is still in the unlocked position you need only to close the vault door and then turn the handle clockwise until it is vertical.



Step 2

If the T-handle is turned while the door is open, you'll need to unlock the lock and turn the handle before it will close. Enter the combination and turn the handle counter clockwise.



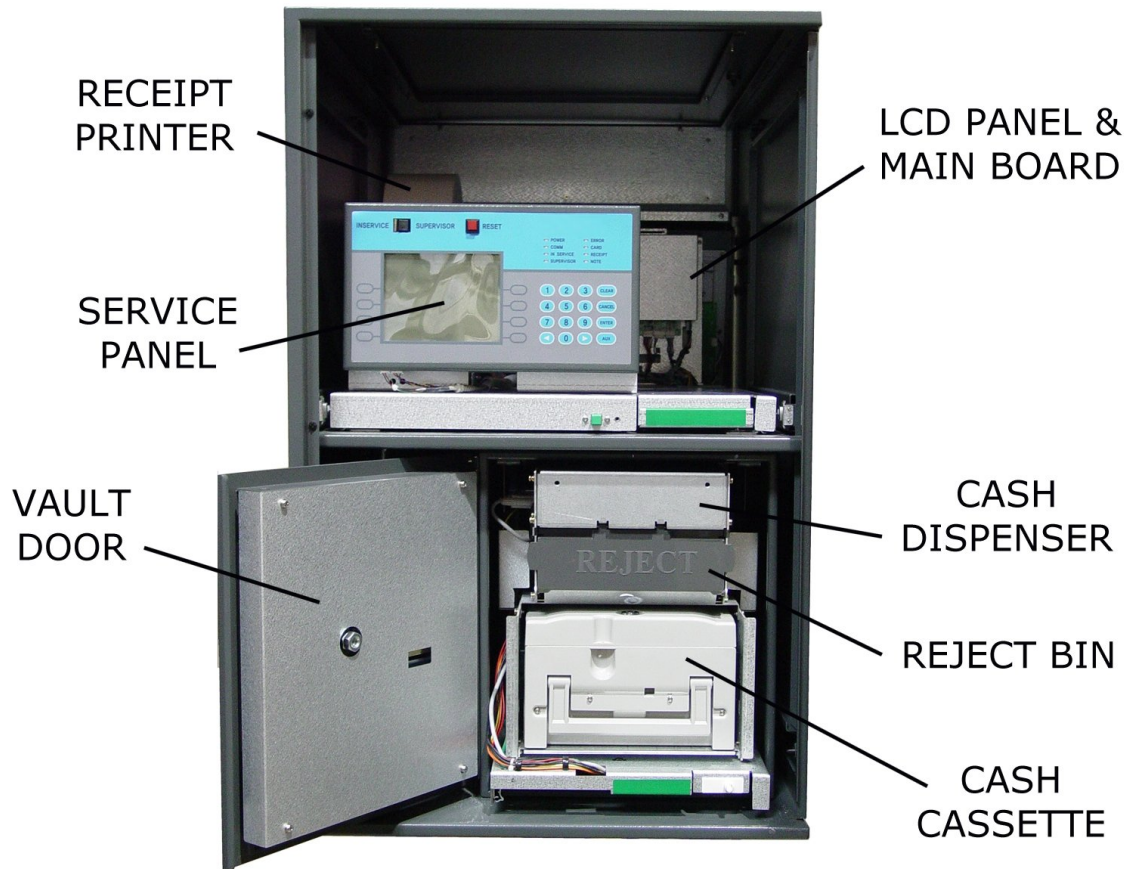
Step 3

Always make sure the vault is securely locked after closing the door by trying to turn the T-handle counter-clockwise again.

END

4.1.3 Component Identification.

The diagram below shows the T4000™ with the rear access door and vault door open to highlight the main components.



4.1.4 Operating and Changing the Electronic Lock

Before operating the lock or changing the combination, READ THE INSTRUCTIONS THOROUGHLY*.

***See manufacturers lock manual included in the "Open Me First Box"**

The LA GARD "LG Basic" series electronic lock uses a touch key pad for all lock functions.

Power is supplied to the lock via a standard 9-volt Alkaline battery which contained within the external portion of the lock. The lock will warn of low voltage by repeatedly beeping.



NOTE: See LA GARD manual for default combination

TO UNLOCK FROM DEFAULT COMBINATION

Step 1

Press the default combination one button at a time. A beep is heard following each key press.

Step 2

If the combination is entered correctly a double-beep is heard and the internal lock solenoid will click indicating that the lock is open and the vault handle may now turn.

Step 3

If the wrong combination is entered a triple-beep will be heard. If the correct combination is not entered within 4 consecutive attempts a 5 minute delay or "lock out" will begin. During this time, the led at the 2 o'clock position on the face of the lock will flash at 10 second intervals. In addition any key press will respond with a triple-beep. Once the 5 minutes has elapsed, 2 more consecutive failed attempts will restart the 5 minute timer.

END

WARNING: While orienting your self with the lock, making changes to the lock programming (including changing the combination) ALWAYS work with the vault door open. Do not close the vault until the lock has been thoroughly tested.

Hantle does NOT program a master combination!

Changing to a New Combination

NOTE: Combination is required to be 6 digits. Combinations of less than 6 digits will not work.

Step 1

Begin by entering six zeros. (000000)

Step 2

Enter the existing combination one time.

Step 3

Enter the new combination twice. As each six digit sequence is entered, a beep is heard.

Step 4

If the procedure is not performed correctly, at the end a triple-beep is heard and the lock will revert back to the previous combination.

END

The LG Basic series lock includes several options including multiple user / manager passwords. Please consult the LA Gard manual included in the "Open Me First" box for instructions.

4.2 CASH OPERATIONS

4.2.1 Adding Cash to the Cassette



Step 1

Follow the instructions found in the beginning of Section 4 to open the vault door and access the cash cassette.



Step 2

The cash cassette and reject bin are opened using the round headed key included in the "Open Me First" box.



Step 3

Remove the cassette from the dispenser and use the cassette key to open the lock (the key remains in the cassette while the lock is open).



Step 4

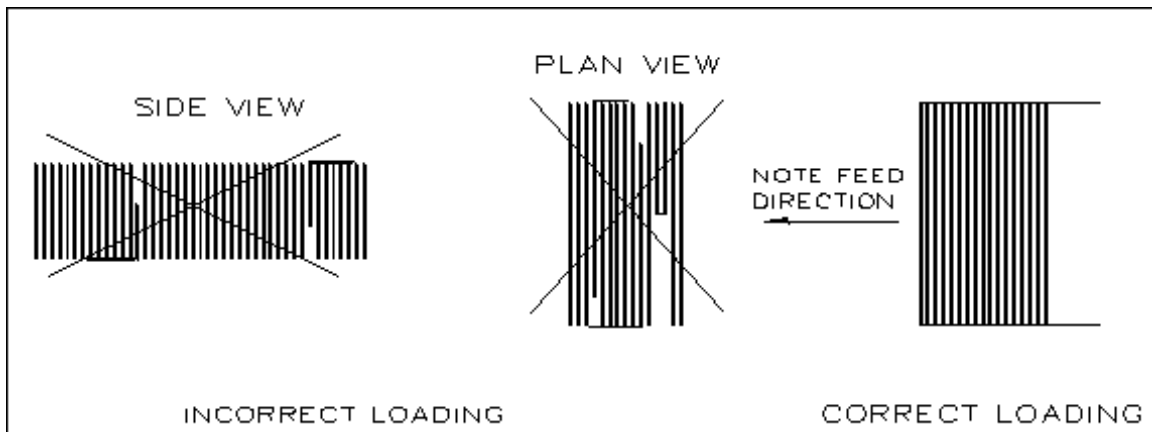
Pull back on the backing plate to add cash. Pulling the backing plate all the way back will cause it to lock in place while cash is loaded.

NOTE: Pay careful attention to release the backing plate (by gently pulling backwards and then releasing) before closing the cassette.

Once the cash is added to the cassette and the backing plate securing it against the rollers, close the lid and lock the cassette.

TIPS ABOUT ADDING BILLS:

1. Fan the notes so that the notes are not sticking together.
2. Remove all the notes with holes or notes that are torn.
3. Unfold the folded notes.
4. Place all the notes correctly.

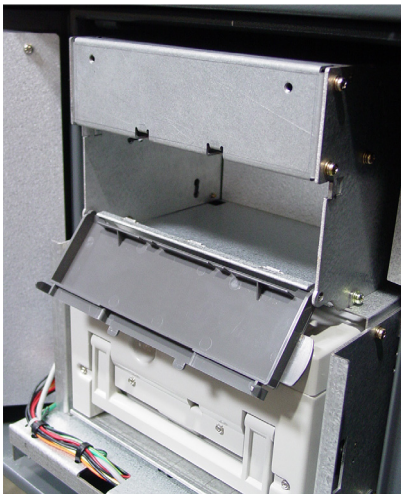


4.2.2 Emptying the Reject Bin



Step 1

Open the reject bin by pulling on either tab located next to the plastic door.



Step 2

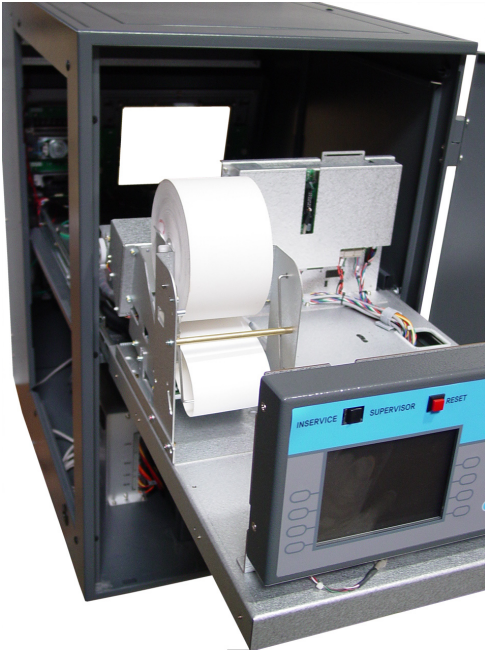
Remove any bills that might have been rejected.

Once the rejected notes are removed, close and then lock the reject bin door.

NOTE: Inspect all notes before returning them to the cassette! If you believe your dispenser is rejecting notes excessively, contact your service personal.

END

4.2.3 Loading the Receipt Paper



Step 1

Open the rear access panel and press the button to release the slide tray.

There is a shipping screw securing the slide tray which should be removed during installation. Please see the installation section of this manual (Section 2) for location of the shipping screw.

Paper roll and plastic paper spindle are included in the "Open Me First" box.



Step 2

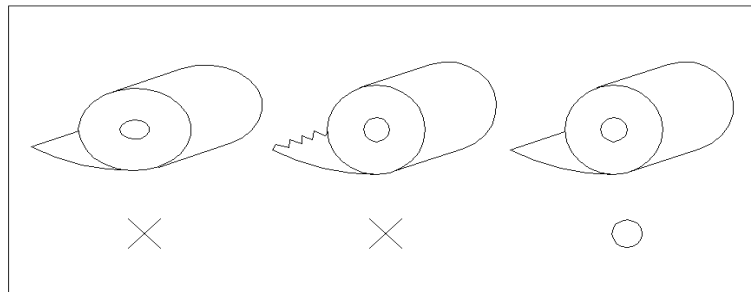
The left service panel may be removed to give easier access to the front of the printer, but is not necessary.

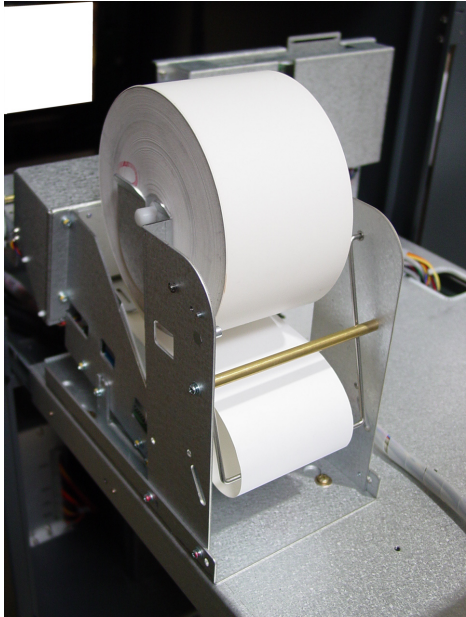
Step 3

Prepare the new paper roll. Note below.

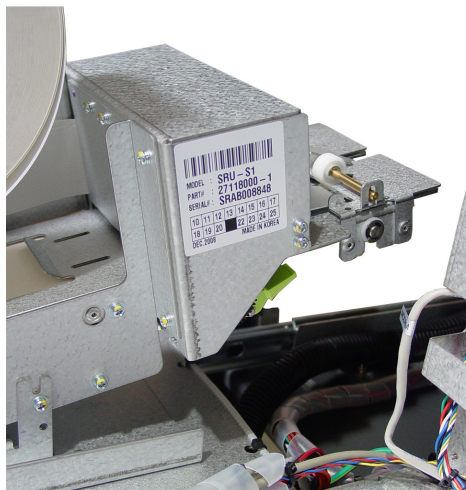
NOTE:

1. Make sure the roll is in its proper roll form. (A deformed roll may cause jamming problems.)
2. When replacing the new roll, make sure the end of the roll paper is cut straight.



**Step 4**

Feed the roll as shown in the picture at left. The outer side of the paper is the coated or printing side. Using your finger, insert the paper up the loading guide until the paper stops. The paper will not feed until the machine is initialized (or powered on). If the paper does not feed, make sure the paper is all the way in the loading guide. Also make sure the roller assembly is closed (see below)

**Step 5**

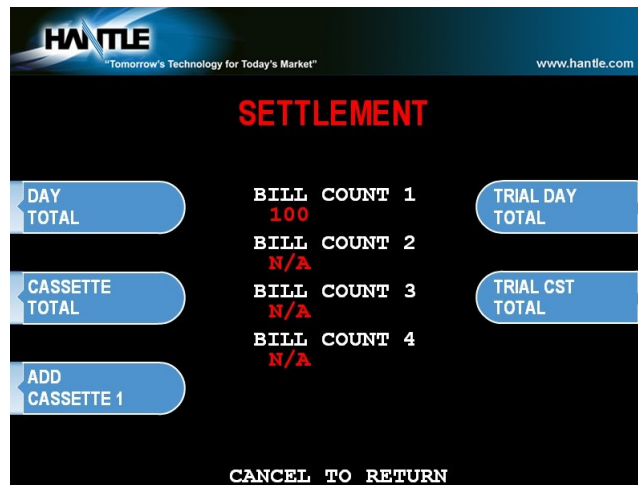
The roller assembly is located at the front of the printer on the bottom side. A green plastic lever is used to open and close the rollers. Press down on the lever to open the rollers and up to close them. If error claims the rollers are open (and yet the lever is up) press up on the rollers themselves to make sure they are closed completely.

Step 6

If the printer is feeding paper, however no printing appears on the receipts make sure the outer side of the paper is facing up. The printer can only print on the coated side of the paper.

END

4.3 SETTLEMENT MENU



Choose Settlement from the Operator Function menu. This menu controls how many bills have been added to the ATM as well as generating Day total and Cassette total reports.

ADDING CASH

Step 1

Press the Add Cassette button for the cassette to be added (1 or 2).

Step 2

Using the main keypad, enter the number of bills added to the cassette (not the amount of money).

Step 3

Press the enter key when finished to set the amount.

END

If you make a mistake and wish to zero out the current number of bills, you'll need to press Cassette total to do this. Anytime you press Add Cassette you will be adding on to the current number of bills already programmed.

For example:

There are 50 bills in the cassette and in the settlement menu it says Current # of Bills = 50. You wish to add 25 more bills to the same cassette, you press Add Cassette, then type 25 from the keypad and press enter. The current number of bills will now be 75.

(continued)

Now say there are 50 bills in the cassette and in the settlement menu it says Current # of Bills = 50. If you wish to remove 25 bills from the cassette, press Cassette Total. This will return the number of bills in both cassettes to zero and print a receipt showing remaining bills and loaded bills. Now press Add Cassette and enter 25 from the keypad, press enter to set. The current number of bills will not be 25.

DAY TOTAL

```

*****  DAY TOTAL  *****
=====
Start      : 01/01/2009, 05:34:08
Today     : 01/05/2009, 07:18:52
TERMINAL # 12345678

( TERMINAL TOTALS )
Count of Withdrawal : 0
Count of Balance    : 0
Count of Transfer   : 0
Count of Non-Cash   : 0
Amount of Dispense  : $0.00
Amount of Non-Cash  : $0.00
Amount of Surcharge : $0.00

( HOST TOTALS )
Count of Withdrawal : 0
Count of Balance    : 0
Count of Transfer   : 0
Count of Non-Cash   : 0
Amount of Dispense  : $0.00
Amount of Non-Cash  : $0.00
Amount of Surcharge : $0.00

```

The Day Total function keeps a running total of the ATMs transaction activity. When you press day total, the ATM will print a report showing transaction totals starting from the last time a day total was done until now. At the same time, the 4000c™ will dial into the Host Processor and retrieve their totals for the same time period. To the left is an example of a Day Total Report. Once the report is printed, the ATM will reset these values to 0 and begin recording from this point.

One thing to keep in mind when doing a Day Total is that the Host (or Processor) cuts off their transactions at a certain time every day. If you do a Day Total report before or after the processor has done their cut off, you may see discrepancies between what the terminal had reported and what the host reports.

To avoid this, talk to your dealer and find the approximate cut off time for your processor. Try to do your day totals at this same time. Remember that if you do not match your processor, the missing transaction(s) will usually appear on the next total. If you are unable to do your Day Total at the same time each day you can program the machine to do a "Trial Day Total" automatically (see section 3.2.8).

CASSETTE TOTAL

```

CASSETTE TOTAL
Start      : 01/01/2009, 05:34:08
Today     : 01/05/2009, 07:18:52
TERMINAL # 12345678
CST1 Loaded   : 100($20)
    Dispensed : 0
    Rejected  : 0
    Tested    : 0
    Remaining : 100($2000)
CST2 Loaded   : 0(N/A)
    Dispensed : 0
    Rejected  : 0
    Tested    : 0
    Remaining : 0(N/A)
CST3 Loaded   : 0(N/A)
    Dispensed : 0
    Rejected  : 0
    Tested    : 0
    Remaining : 0(N/A)
CST4 Loaded   : 0(N/A)
    Dispensed : 0
    Rejected  : 0
    Tested    : 0
    Remaining : 0(N/A)

```

The Cassette Total function prints a report detailing the number of bills that have been loaded into the cassette and how many bills were dispensed, either to the customer, the reject bin or used during a dispenser test. This report will show totals from the last time you ran a Cassette Total to the current date. After the Cassette Total has been printed, all the values will reset to zero.

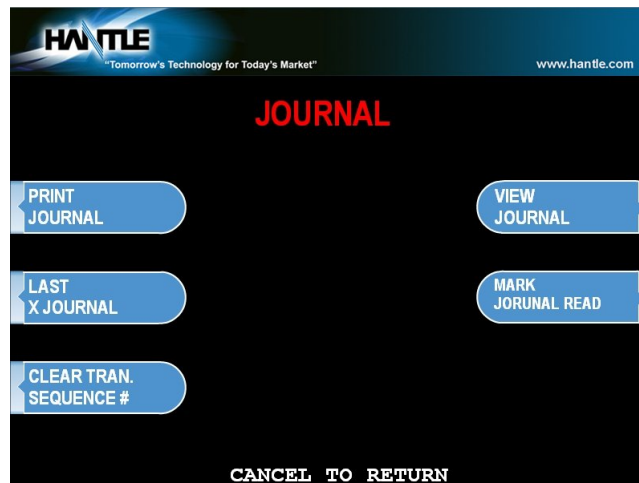
NOTE: Running a Cassette Total is the only way to clear the Settlement value back to zero bills.

TRIAL CASSETTE TOTAL / TRIAL DAY TOTAL

These reports are identical to pressing Day Total or Cassette Total, the only difference being that they will not zero out the amounts. This report is useful if you wish to know current Total statistics without closing them out. To run these reports, simply press the button and the report will print. Press Enter when finished to return to the Settlement Menu.

NOTE: Trial Day Total can be set to process automatically at a preset time. See Section 3.2.8 for information on automated scheduling of a Trial Day Total.

4.4 JOURNAL MENU



The Journal is an electronic record of all transactions, errors and some programming changes made to the ATM. Depending on the size of each entry, the memory can hold up to 40,000 records. Each entry into the journal is indexed with a 5-digit sequence number starting with <00000>. Once the journal memory has reached its maximum limit, it will begin to overwrite the oldest entries. You will not be warned of this, therefore it is critical to make sure to download or print your journal often enough to avoid losing records.

The journal can be printed from the ATM in two different methods, Standard and Condensed. Standard will give complete information for each transaction (basically a copy of the customer's receipt), whereas the condensed print will only show sequence number, date, time, what type of transaction and then amount requested / amount dispensed (in case of withdrawal).

PRINT JOURNAL

Step 1

To print the journal, press the Print Journal button.

Step 2

You will be prompted to choose standard (PRINT) or condensed (CONDENSED PRINT).

Step 3

The ATM will then print all journals in memory up to the last time you printed a journal. Each time you print a journal a marker is set at that point. The next time you print the journal, the ATM will print from that marker to the current time.

END

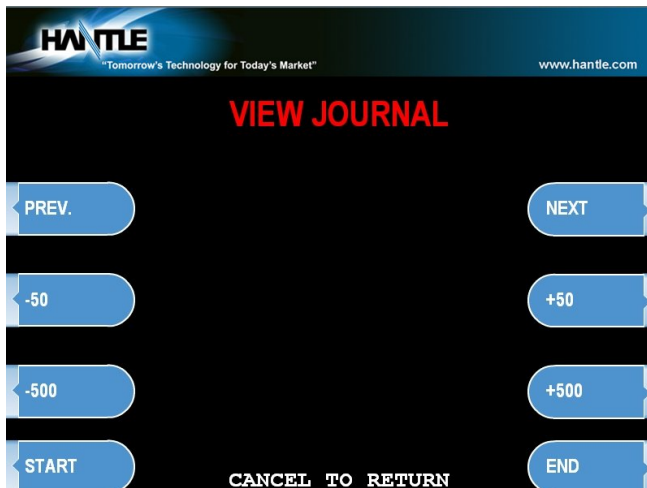
LAST X PRINT

The Last X Print option allows you to bypass the marker set when printing a journal and go back to recover an older record (so long as the record still exists in memory). For example, you print a journal and it includes sequence numbers <00001> to <00100>. If you wanted to go back and reprint journal number <00080> you would need to do a Last X Print for 20 records ($100-20=80$) this would give you records 100-80. To do a Last X Print, press the Change Record Number button and then enter a value of how many records you wish to go back. Press Enter then Print.

CLEAR TRANSACTION SEQUENCE NUMBER

This function will reset the journal sequence number back to <00000>. This may be useful if you switch processing or switch Terminal ID numbers and want to keep new records.

VIEW JOURNAL



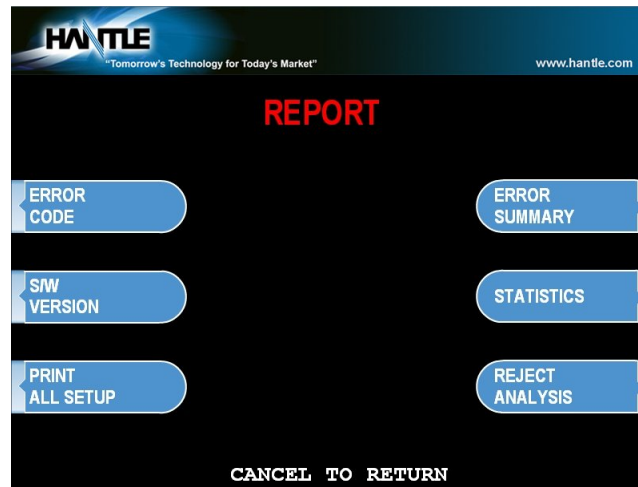
View Journal allows you to visually inspect the journal records. Press the View Journal button and you will see the screen to the left.

Use the Arrow keys on the main keypad to scroll through the records. You can also use the buttons next to +50 and -50 to go forward or backwards 50 records at a time. Use the Enter button to print the journal entry currently displayed. Press Cancel to exit this menu.

MARK JOURNAL READ

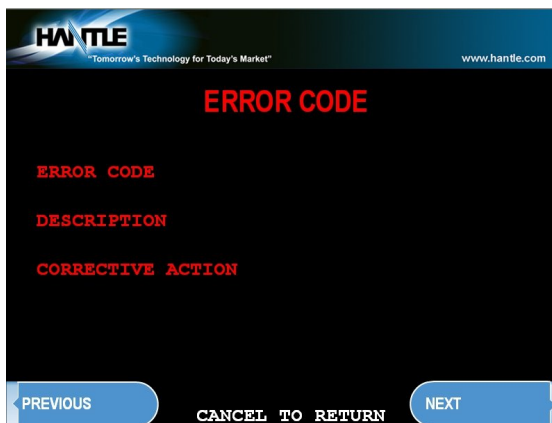
Mark Journal Read (previously referred to as "Clear Journal") sets the current journal marker to the most recent journal recorded. It does not delete the journal from memory. For example: You currently have 100 entries in your journal, you press Mark Journal Read. Now if you press Print Journal, nothing will happen because there are no current journal entries, however if you used Last X Journal, you could enter 100 and get all the records.

4.5 REPORTS MENU



The reports menu provides statistical information as well as troubleshooting and error information.

ERROR CODE



If the machine is out of service, and you are unfamiliar with the error code being displayed (or none is displayed), this screen will provide error descriptions as well as corrective action for the currently displayed code. Press the Error Code button to enter this screen. You can also use your left and right arrow keys on the main keypad to scroll through all the possible error codes and descriptions the ATM can report. To the left is an example of an Error Code screen.

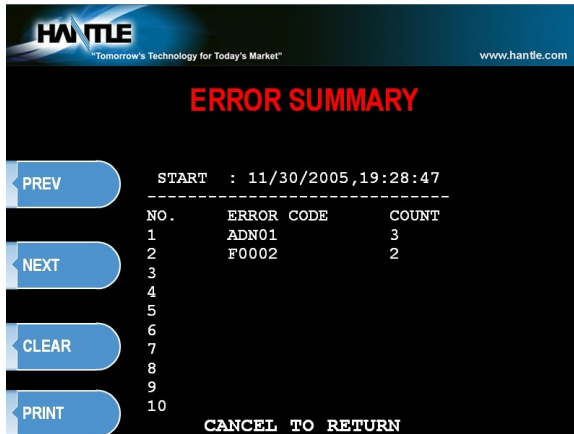
S/W VERSION

This screen provides the current revisions of software used in your ATM. This information may be used to troubleshoot a problem, or simply to make sure that the software being used is up to date. It is useful to have this information when reporting a problem to your dealer / distributor. Occasionally check with your dealer / distributor for software updates. Press the S/W Version button to view the current revisions. Press Enter key to print a copy of the displayed information.

PRINT ALL SETUP

The Print All Setup report is a complete listing of all the programming details for your ATM. It includes everything from software versions to message screens and host setup parameters. This report is extremely important when troubleshooting problems. It is highly recommended to keep a copy of this on hand for when you need to contact your service personal. To print the report, press the Print All Setup button.

ERROR SUMMARY



This report is a running total of all errors that have occurred to your ATM. It lists the errors by the number of times they occurred. Sometimes your machine can go out of service and no error code is displayed (usually with communications problems). If this happens, check the error summary, as the code will be displayed here. You can print these errors. To the left is a sample of an error summary report.

Press Clear to clear the report and start over. This can be useful if you have a machine where multiple errors are occurring. If you clear the error codes and then attempt a transaction, if that transaction fails, the error summary will only show those errors that occurred during that last transaction. You can also print the error summary list by pressing the Print button.

STATISTICS

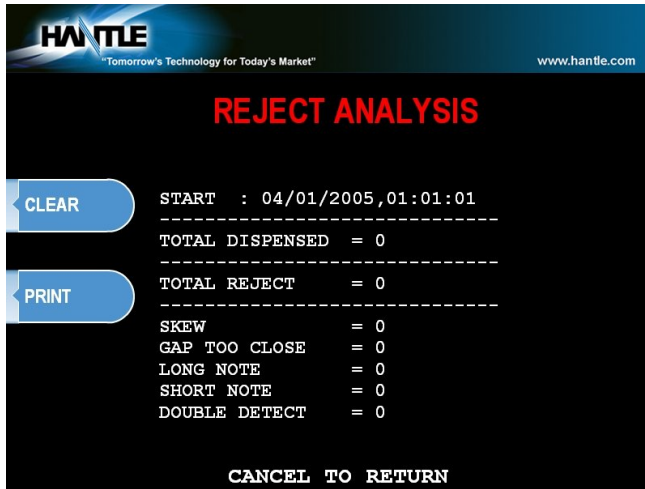


This report keeps running averages of transaction information, including:

- Withdrawal Transactions per day
- Non-Cash withdrawals per day (if enabled)
- Balance Transactions per day
- Transfer Transactions per day
- Notes Dispensed per day
- Surcharge amount collected per day

Use the Enter key on the main keypad to print, Cancel to return to the reports menu.

REJECT ANALYSIS



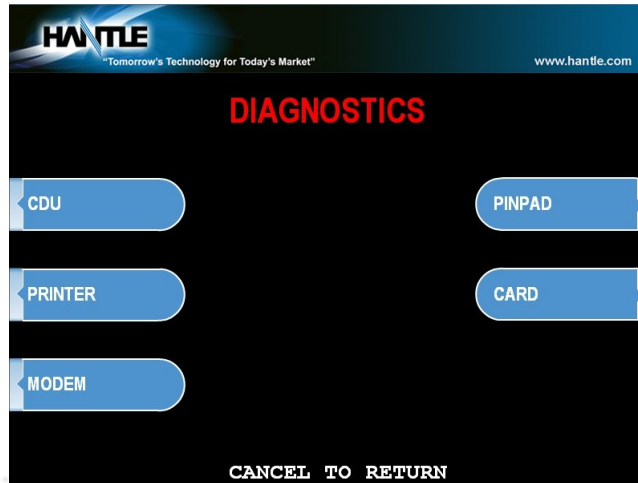
Reject Analysis a report detailing any bills that may have rejected in your cash dispenser. There are several different causes for a bill to reject, and this report will show specific reasons why. Please note that the count of a particular reject may not reflect the number of bills in the reject bin. For example: the reject analysis may show 3 double detect rejects. However in your reject bin there are 7 bills.

If a bill fails the double detect sensor in the cash dispenser, the sensor can detect that there is more than one bill but not how many more, so all bills in that instance are diverted to the reject bin. Above is the reject analysis screen. Press the Clear button next to the screen to clear the summary and start at zero. Press the Print button next to the screen to print a copy of the reject information.

SECTION 5: DIAGNOSTICS

5.1 DIAGNOSTICS MENU

The ATM features built-in diagnostics features to assist you in troubleshooting any problems that may develop. Below is the main diagnostics menu.



CASH DISPENSER (CDU)

This will test the ability of the cash dispenser to pull a note from one or both cassettes and send it to the reject bin. You can choose from the first cassette, second cassette or both cassettes at once.

NOTE: You must have bills entered into Settlement before running this test.

RECEIPT PRINTER

This test will print a test receipt. If the test is successful you should receive a receipt with three sets of sample characters for each time the test is run.

MODEM

The modem test will allow you to enter a phone number into the machine and test dial. To run the test, press the Modem button and then press Test Dial. Using the main keypad, enter a phone number to be dialed (for example your cell phone number) and then press <Enter>. The modem should dial out to the number you entered. In most cases a failure during the modem test will relate more to phone line problems rather than the modem circuit itself.

PINPAD

This tests the keypads of the ATM. Press the different keys on each keypad (main and LCD) and the appropriate key will show on the screen. Pressing the <Cancel> key on the main keypad will stop this test and return to the diagnostics menu.

CARD SCAN

This will test the three tracks of the card scanner to ensure they are reading properly. Press the Card Scan Button, you will see a screen displaying the three ISO tracks. Swipe your ATM card (or any card with a magnetic stripe) and the information from that card will appear on the appropriate track. During normal operation of the ATM only ISO Track 2 is read, however during the card swipe test all three tracks are read at once.

5.2 SERVICE PANEL

The T4000™ has a rear service panel that can be used to do some ATM programming (excluding master keys and viewing graphics) as well as run reports and cash management.



IN SERVICE / SUPERVISOR

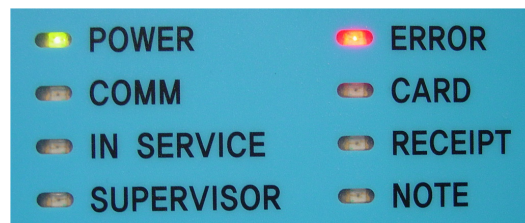
This switch toggles the front ATM Screen from "In Service" mode to "Out of Service". When the switch is set to Supervisor, the ATM screen will read "Out Of Service" to the customer. NOTE: If you input your password and enter the Operator Menu on the Service Panel, the ATM will automatically go "Out of Service". This switch just allows you to bring the ATM to an Out of Service condition during cash load, or maintenance.

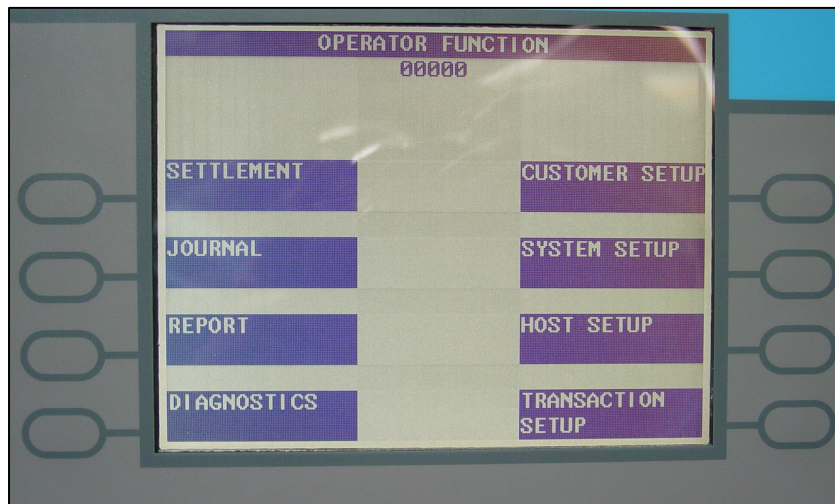
RESET

The Reset button is active once you enter the Operator Menu of the Service Panel, this will cause the ATM to reinitialize itself and begin the power on processes.

STATUS LIGHTS

The Status Lights give the current condition of the ATM. An Error condition will cause the red Error LED to activate. In Service or Supervisor mode shows the condition at the front ATM screen.





OPERATOR MENU

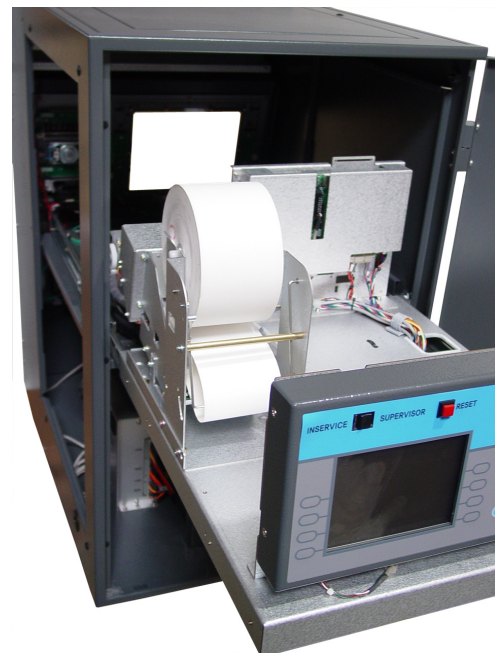
The Service Panel Operator Menu functions like the menu accessed from the main ATM screen, with most of the options and functions detailed in Section 3 of this manual.

NOTE: You cannot program Master Keys from the Service Panel. Because the keys are stored and encrypted in the EPP keypad itself, the main keypad must be used for all Key Management functions. You cannot access Secure Mode via the Service Panel.

Additionally you can enable or disable screen graphics from the service panel, however you cannot view them.

REPORTS

If you will be printing reports from the Service Panel, you may want to instruct your Operators to slide the component tray back so that they can retrieve the printed reports from the front of the receipt printer without having to go to the front of the machine.



SECTION 6: CUSTOMER TRANSACTIONS

6.1 OPENING PROCEDURES

This section explains how to place your ATM in service.

Step 1

Open the front panel and turn the power on. (see page 2.7)

Step 2

If there is no receipt paper, load the receipt paper. (see page 4.10)

Step 3

Open the security door and replenish the cash cassette. (see page 4.7)

Step 4

Go into the OPERATOR FUNCTION mode and input the number of bills in the cash cassette. (See page 4.12)

Step 5

Exit the OPERATOR FUNCTION MODE. Make sure the Service Panel is not in Supervisor Mode.

Step 6

After connecting to the processor, the terminal will be ready for service.

Step 7

If the machine is not ready for service, please check the following:

1. Determine if the phone line is properly connected;
2. Determine if all communication parameters are correct;
3. If, after doing the above steps, the ATM is still not in service, contact your service personnel.

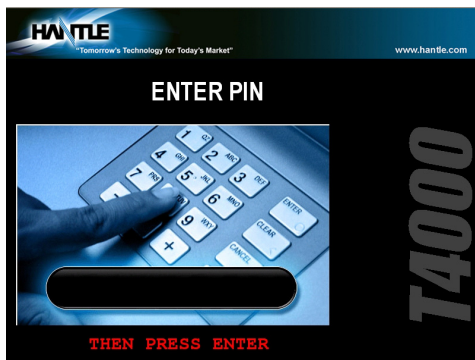
END

6.2 WITHDRAWAL TRANSACTION



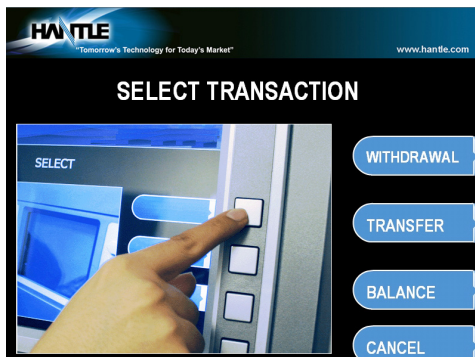
Step 1

Dip the card.



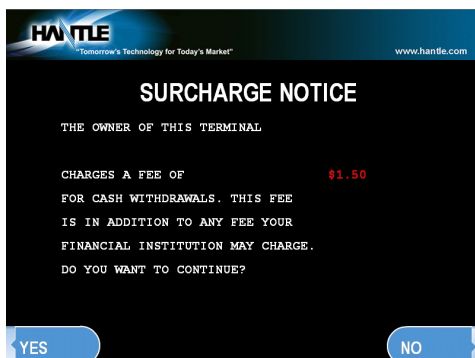
Step 2

Enter the pin number and press the "ENTER" key.



Step 3

Press the "WITHDRAWAL" screen key.

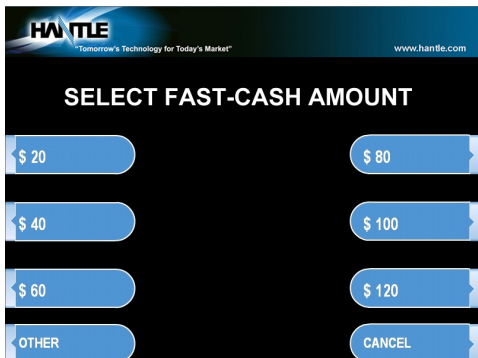


Step 4

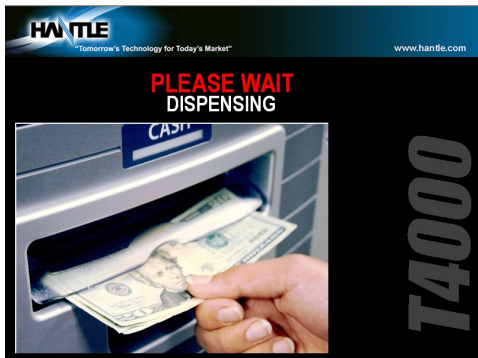
If a "SURCHARGE" option is enabled, the "SURCHARGE" screen will be displayed. Select "YES" to continue, or "NO" to cancel.

**Step 5**

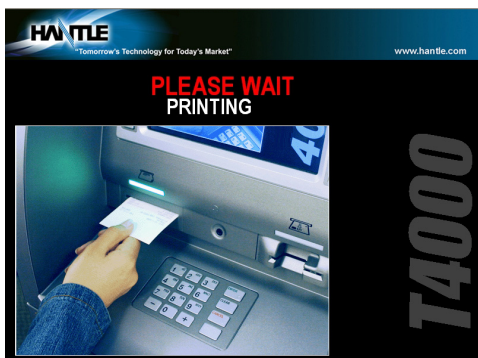
If "YES" is selected, the following screen will be displayed. Select the desired option.

**Step 6**

Select the desired amount to be withdrawn. If the desired amount is not displayed, select the "OTHER" screen key.

**Step 7**

After the desired amount is entered, the ATM dials the processor and requests approval for the transaction.

**Step 8**

When authorization is received from the processor, the cash will be dispensed and the receipt will be printed.

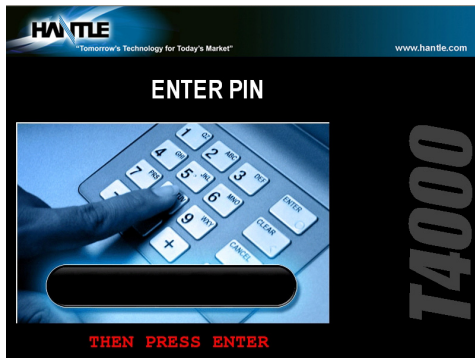
END

6.3 BALANCE INQUIRY TRANSACTION



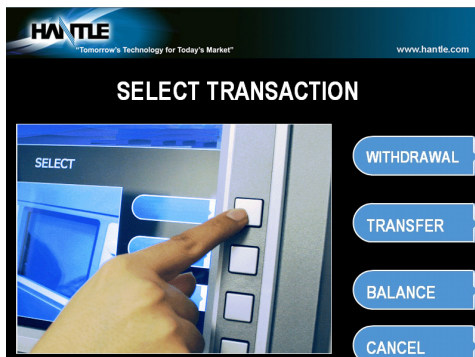
Step 1

Dip the card.



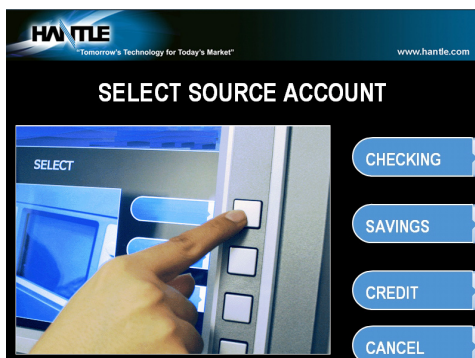
Step 2

Enter the pin number and press the "ENTER" key.



Step 3

Press the "BALANCE" screen key.



Step 4

The following screen will be displayed. Select the desired option.

**Step 5**

The ATM dials the processor and requests approval for the transaction.

**Step 6**

When authorization is received from the processor, the following screen will be displayed and the receipt will be printed.

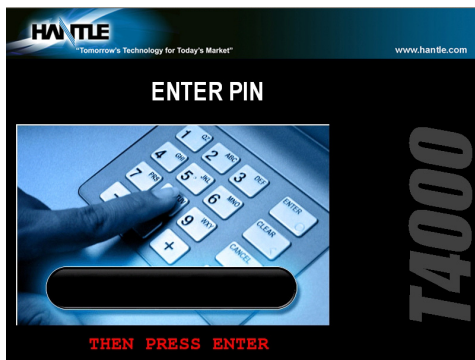
END

6.4 TRANSFER TRANSACTION



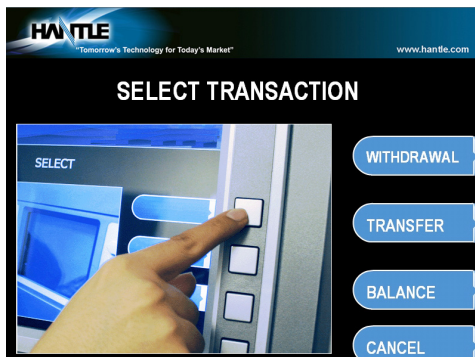
Step 1

Dip the card.



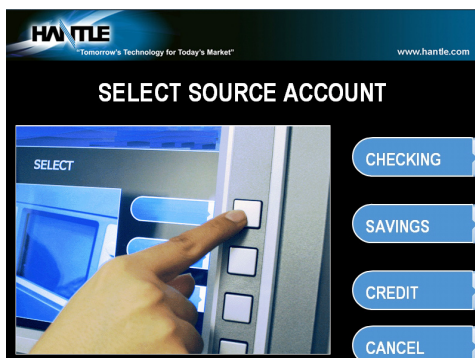
Step 2

Enter the pin number and press the "ENTER" key.



Step 3

Press the "TRANSFER" screen key.



Step 4

The following screen will be displayed. Select the desired account to be transferred "FROM."

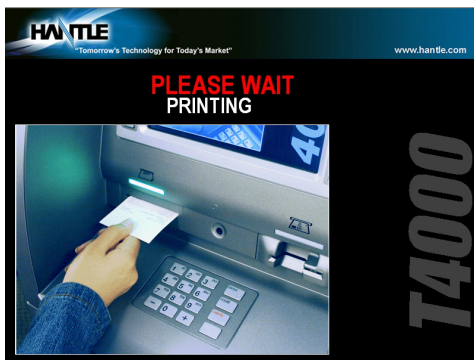
**Step 5**

Select the desired account to be transferred "TO." (Target Account)

Note: Some processors or networks will not allow transfer from or to a credit card account.

**Step 6**

Enter the desired amount to be transferred and press the "ENTER" key.

**Step 7**

The ATM dials the processor and requests approval for the transaction.

**Step 8**

When the authorization is received from the processor, the following screen will be displayed and the receipt will be printed.

END

6.5 CLOSING PROCEDURE

This section explains the closing procedure for the ATM.

Step 1

Perform the "DAY TOTAL" and "CASSETTE TOTAL" functions in the "OPERATOR FUNCTION MODE." (can be done from rear Service Panel)

Step 2

Open the security door. Remove the cash from the Cash Cassette and Cash Reject bin. If excessive notes are found in the reject bin, check Reject Analysis report.

Step 3

Print the Journal. (can be done from the Service Panel)

Step 4

If the result of the DAY TOTAL and CASSETTE TOTAL does not match the amount counted in the Cash Cassette, refer to the Journal for verification.

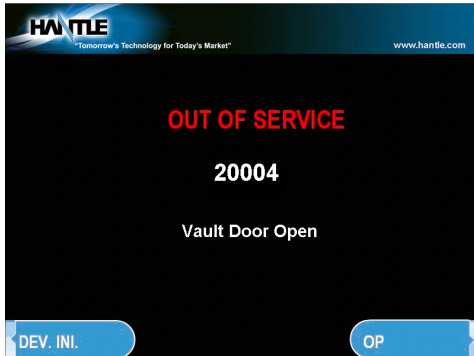
Step 5

Turn the power off and close the security door.

END

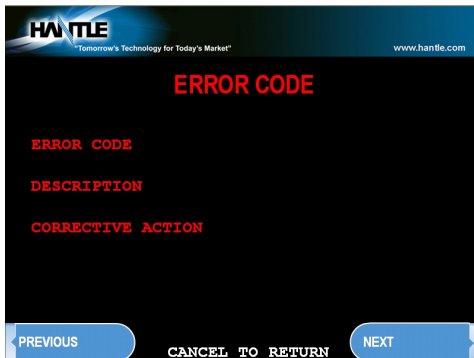
6.6 ERROR RECOVERY

If an error occurs the following screen will be displayed. This procedure can be done from the main ATM screen, or using the rear Service Panel.



Step 1

Press "ENTER, CLEAR, CANCEL" keys then, press the 1, 2, 3.



Step 2

Verify the Error that has occurred through the "ERROR CODE" of the "REPORT MENU" in the "OPERATOR FUNCTION," and perform the corrective action, then press the "DEVICE INITIALIZE" screen key.

If the Error is not corrected after resetting, contact your service personnel.

END

APPENDIX A: ERROR CODES

ERROR CODES	ERROR DESCRIPTION	CORRECTIVE ACTION
20001	Unable to load a cassette.	Remove and replace cassette – Check the micro-switch located on the inside left wall of the dispenser.
20002	Low Cash.	Replenish the cash – If using less than 75 bills, disable the “Low Cash Warning” in the Transaction Setup Menu.
20003	Reject Bin full.	Empty the Reject Bin – If the bin is empty, do a Day Total and then a Cassette Total – If that doesn’t help, check AP, BIOS and CDU ROM versions.
20004	Vault Door is open.	Check vault door switch (located upper left corner) – check that black and white, 2-wire connector is properly connected at rear of main board. Bend switch forward to aid closing problems.
20010	Receipt paper jam.	Remove jammed paper – Release receipt paper drawer by pressing the tab with the green sticker located at the front of the printer. Remove printer to locate difficult jams.
20012	Receipt feed lever open.	Close the feed lever on the printer.
20013	Receipt paper empty.	Replenish the paper roll.
20014	Thermal printer is overheated.	Contact manufacturer.
2xx15	Cash Dispenser detects bills prior to dispensing.	Remove any jammed bills from the dispenser.
90001	Card Swipe Error.	This does not mean the card reader is bad. Just records unsuccessful attempts at swiping cards.
Axxx1	Receipt Printer feed lever open – during operation.	Close the feed lever on the printer.
Axxx2	Thermal printer is overheated – during operation.	If problem is consistent then print head assembly may be defective.
Axxx3	Receipt paper jam.	Remove jammed paper – Release receipt paper drawer by pressing the tab with the green sticker located at the front of the printer.
Axxx4	Receipt paper is empty.	Replenish the paper roll.
Axxx5	Receipt paper is jamming during loading.	Remove any jammed paper and then reload.
Axxx8	Receipt Printer cutter error.	If consistent, printer will require repair/replacement.
ADNxx	Printer connection error.	Check cables between Printer and Mainboard. Remove cables (even though they may be attached) and reconnect.
CANCE	Surcharge Cancel	Customer has canceled the transaction at surcharge.
C0011	Exit sensor is not cleared	Check sensor, verify that the cabling plugged into the sensor boards is secure.
C0012	Reject gate timing sensor not cleared.	Check dispenser for jammed bills and reinitialize the machine.
C0013	Both reject gate and exit sensor not cleared	Check dispenser for any notes or obstructions.
C0017	Undefined	
C0021	Double detect sensor is not cleared.	Check dispenser for jammed bills and reinitialize the machine.
C0022	1 st cassette inlet sensor not cleared.	Check dispenser and cassette for jammed bills.
C0023	Cassette exit sensor (L+R) not cleared.	Check dispenser for jammed bills and reinitialize the machine.

ERROR CODES	ERROR DESCRIPTION	CORRECTIVE ACTION
C0028	Count sensors not cleared	Check dispenser for jammed bills and reinitialize the machine.
C0030	Main Motor encoder is not synchronized	Turn dispenser over by hand, and then reinitialize. May require repair.
C0031	Forward motor encoder not synchronized.	Turn dispenser over by hand, and then reinitialize. May require repair.
C0032	1 st cassette inlet sensor not cleared	Check for notes where the cassette engages the dispenser.
C0033	Undefined	
C0036	Exit sensor blocked while initializing	Clear any notes which may be blocking the exit sensor.
C0037	Invalid response (or no response) from double detect sensor	Verify the connection to the double detect module.
C0039	Solenoid not responding	Verify the function of the gate solenoid.
C003A	Too many notes requested during a test dispense	Test dispense failed, re-run the test and check notes.
C0041	Failed (5 times) to dispense a note after a successful dispense	Check why notes are rejecting following at least one successful dispense (in the same transaction).
C0042	Undefined	
C0043	10 Notes rejected in a row (single transaction)	Check the notes in the cassette. Check reject analysis for source of rejected notes (long note, double-detect, etc)
C0044	5 notes consecutively rejected	Check reject analysis for cause of rejected notes.
C0045	Note count sensor reporting mismatch	Verify count of notes in the cassette against the settlement.
C0046	Undefined	
C0047	1 st cassette failed to dispense a note	Most common reason is cassette is empty. Verify that there are notes in cassette 1. Check the quality of the notes and condition of the pick rollers.
C0049	Dispense request of "0" notes	Check setup of CDU in Operator Menu, dispenser may need reprogramming.
C004A	First cassette exit sensor (#6, #7) not clear	Clear the note path of any notes or obstructions.
C004D	1 st cassette not inserted	Check cassette and verify that it's inserted properly.
C004E	2 nd cassette not inserted	Check cassette and verify that it's inserted properly.
C0050	AP does not receive response after dispense request	AP did not validate dispense command. This is an AP software fault, not CDU.
C0051	Exceeded maximum number of notes dispensed (150) in a single trans.	Check reject analysis, and verify test dispense.
C0052	1 st cassette inlet sensor not cleared	Check for notes where the cassette engages the dispenser.
C0053	Abnormal amount of double-detect failures during dispense	Check condition of double-detect module. Check quality of notes and pick rollers.
C0054	Undefined	
C0055	Long note detected at exit sensor during dispense	Clear any jammed notes or obstructions from the exit sensor.
C0056	Short note detected at exit sensor during dispense	Clear any jammed notes or obstructions from the exit sensor; mismatch of rejected notes.

ERROR CODES	ERROR DESCRIPTION	CORRECTIVE ACTION
C005A	Undefined	
C005B	2 nd cassette fails to pick up notes	Same as C0047, the second cassette is likely empty.
C0060	3 rd cassette inlet sensor not cleared	Check for notes where the 3 rd cassette engages the dispenser.
C0062	3 rd cassette inlet sensor not cleared	Check for notes where the 3 rd cassette engages the dispenser.
C006A	Note jam at 2 nd cassette exit	Check rollers and sensors where notes would leave the 2 nd cassette.
C0070	4 th cassette inlet sensor not cleared	Check for notes where the 4 th cassette engages the dispenser.
C0072	4 th cassette inlet sensor not cleared	Check for notes where the 4 th cassette engages the dispenser.
C007A	Note jam at 4 th cassette exit	Check rollers and sensors where notes would leave the 4 th cassette.
C007C	4 th cassette fails to pick up notes	Same as C0047/C005B, verify that there are notes in the 4 th cassette.
C007D	4 th cassette not inserted	Check cassette and verify that it's inserted properly.
C0080	2 nd cassette inlet sensor not cleared	Check for notes where the 2 nd cassette engages the dispenser.
C0081	Double detect sensor not cleared while dispensing	Check double-detect sensor for note or obstruction.
C0082	Note leaving cassette exit sensor did not reach DD	A note seen at cassette exit sensors did not reach the double detect module. Check for jammed notes.
C0083	Reject gate timing sensor #2 not cleared during dispense.	Clear the note path before the reject gate.
C0084	Reject gate timing sensor #3 not cleared during dispense.	Clear the note path before the reject gate.
C0085	Note leaving DD sensor did not reach gate sensor	Check the note path for jammed or diverted notes. Check sensors from #5 to #2/#3.
C0086	Note leaving gate sensor did not reach count sensor	Check for jammed notes between #2/#3 sensors and #0/#1 sensors.
C0090	Sensor check error	Left measuring sensor A (#6/#7)
C0091	Sensor check error	Right measuring sensor B (#6/#7)
C0092	Sensor check error	Left gate timing sensor A (#2/#3)
C0093	Sensor check error	Right gate timing sensor B (#2/#3)
C0094	Sensor check error	Exit sensor (#4)
C0095	Sensor check error	Double Detect (#5)
C0096	Sensor check error	Left count sensor A (#0/#1)
C0097	Sensor check error	Right count sensor B (#0/#1)
C009A	Note jam at 3 rd cassette exit	Check rollers and sensors where notes would leave the 3 rd cassette.
C009D	3 rd cassette not inserted	Check cassette and verify that it's inserted properly.
C009F	3 rd cassette fails to pick up notes	Similar to C0047, C005B verify that there are notes in the cassette.
D0001	Modem initializing failure.	This error is reported from the host. Check that programming is correct for this processor.
D0002	Reversal transaction failed.	Check transaction with the processor. Verify CDU functionality with diagnostics. Verify phone connection.
D0012	Invalid transaction.	Network denial code.
D0013	Invalid Amount.	Network denial code.
D0014	Invalid Card Number.	Network denial code.
D0020	Surcharge screen should have been displayed.	Network denial code.

ERROR CODES	ERROR DESCRIPTION	CORRECTIVE ACTION
D0024	Exceeds issuer withdrawal limit.	Network denial code.
D0039	No credit account.	Network denial code.
D0051	Insufficient funds.	Network denial code.
D0052	No checking account.	Network denial code.
D0053	No savings account.	Network denial code.
D0054	Expired Card.	Network denial code.
D0055	Invalid PIN.	Network denial code.
D0057	Transaction not permitted – card	Network denial code.
D0058	Transaction not permitted – Terminal	Network denial code.
D0061	Exceed withdrawal limit.	Network denial code.
D0075	Number of PIN tries exceeded.	Network denial code.
D0078	No Account.	Network denial code.
D0080	Invalid Date.	Network denial code.
D0083	Cannot verify PIN.	Network denial code.
D0086	Cannot verify PIN.	Network denial code.
D0091	Bank unavailable.	Network denial code.
D0092	System unavailable.	Network denial code.
D0093	Transaction serial number mismatch.	Contact host processor.
D0094	Record format mismatch.	Contact host processor.
D0095	Routing ID mismatch.	Verify Routing ID number – Contact host processor.
D0096	Terminal ID mismatch.	Verify Terminal ID number – Contact host processor.
D0097	Response type mismatch (reversal).	Contact host processor.
D0098	Response type mismatch (day-close).	Contact host processor.
D0099	Response type mismatch (Configuration).	Contact host processor.
D009A	Response type mismatch (Withdrawal, Balance, Transfer).	Contact host processor.
D009B	STX omitted.	Contact host processor.
D009C	ETX omitted.	Contact host processor.
D009D	FS omitted (after response code).	Verify that version of ATM Software matches host processor. Contact host processor.
D009E	FS omitted (after retrieval reference number).	Verify that version of ATM Software matches host processor. Contact host processor.
D009F	FS omitted (after system trace audit number).	Verify that version of ATM Software matches host processor. Contact host processor.
D00A0	FS omitted (after account balance).	Verify that version of ATM Software matches host processor. Contact host processor.
D00A1	FS omitted (after available balance).	Verify that version of ATM Software matches host processor. Contact host processor.
D00A2	FS omitted (after available balance).	Verify that version of ATM Software matches host processor. Contact host processor.
D00A3	FS omitted (after authorization response text).	Verify that version of ATM Software matches host processor. Contact host processor.
D00A4	ETX is in wrong place.	Verify that version of ATM Software matches host processor. Contact host processor.

ERROR CODES	ERROR DESCRIPTION	CORRECTIVE ACTION
D00A5	FS omitted (after total cash dispense amount in day close).	Verify that version of ATM Software matches host processor. Contact host processor.
D00A6	FS omitted (after total non cash dispense amount).	Verify that version of ATM Software matches host processor. Contact host processor.
D00A7	FS omitted (after surcharge amount in day close message).	Verify that version of ATM Software matches host processor. Contact host processor.
D00A8	FS omitted (after surcharge in configuration message).	Verify that version of ATM Software matches host processor. Contact host processor.
D00A9	ETX omitted (from configuration message).	Contact host processor.
D0300	Modem is not responding.	Verify modem function.
D1000	No Connection.	Verify modem function.
D1100	ENQ not received from host.	Contact host processor.
D1200	Transmission error.	Verify modem function.
D1300	NAK sent 3 times to host.	Verify host phone number – See D170x.
D1500	Modem connection time out – host not responding.	Verify host phone number – verify modem speed – See D170x. If consistent, it could be a defective modem.
D170x	Modem cannot support connection – excessive line noise (usually D1704/06)	Phone line connected to ATM will not support Data-communication. In line filter may fix this. Excessive EMI emissions from outside source (neon sign, freezer).
D1800	No dial tone.	Verify that incoming phone line is plugged into correct port. Phone line is in use or is being shared with another phone device (FAX, POS, phone)
D1900	No answer.	Verify host phone number – See D170x
D2000	Phone line busy.	Verify host phone number – call line with handset and check for busy signal – See D170x
D2100	Modem initializing error.	Check modem.
D2200	EOT not received from host.	Contact host processor.
D25xx	TCP/IP Communication Error – Cannot Connect	For D2511 typically the TCPIP connection is not getting past the router, no response from the host switch. For D2514 you're typically hitting the host switch, however the message format or protocol is not correct. Check all settings for TID with the host. (ie STD1 vs STD2)
E000x	RMS port failure, response time out, modem failure.	Verify RMS settings (Host Setup) – See D170x
F0001	Current Number of bill is 0.	Load notes into the cash cassette – use Add Cassette function in Settlement.
F0002	No Surcharge Owner set.	Set Surcharge owner – (Customer Setup)
F0003	No Surcharge Amount.	Set Surcharge amount – (Customer Setup)
F0004	No refresh time set when advertisement is enabled.	Set refresh timer – (Customer Setup)
F0005	No Advertisement text when ad. is enabled.	Set Advertisement text – (Customer Setup)
F0006	Dispense limit set error (less than 25 notes)	Set Dispense limit – (Transaction Setup)
F0007	Denomination Set error.	Valid Denomination are \$10, \$20, \$50, \$100 – (Transaction Setup)
F0008	Fast Cash Set error (exceeded dispense limit).	Check the Fast Cash amount. (Transaction Setup)
F0009	Master Key index is invalid.	Check Master Key index – verify checksum (Host Setup)

ERROR CODES	ERROR DESCRIPTION	CORRECTIVE ACTION
F000A	Master Key is empty.	Check Master Key checksum – reinject key (Host Setup)
F000B	Host Telephone Number is not set.	Set Host Telephone Number – (Host Setup)
F000C	Error Retry timer is not set.	Set Error retry time (Host Setup)
F000D	RMS Password is not set when RMS is enabled.	Set RMS Password – (Host Setup)
F000E	RMS phone number is not set when RMS send is enabled.	Set RMS Phone number – (Host Setup)
F000F	Terminal ID is not set.	Set Terminal ID number – (Host Setup)
F0010	Routing ID is not set.	Set Routing ID number – (Host Setup)
F0011	Master Key Serial number is not set	Set Master Key serial number – (Host Setup)
F0013/ 14	NVRAM Failure	Fatal error, defective memory chip. Replace Mainboard.
F0015	Serial Number not Set	Set Serial number in Operator Menu
F0016	Master Password left at default	ATM will not go into service with the default master password. The master password must be changed from default.

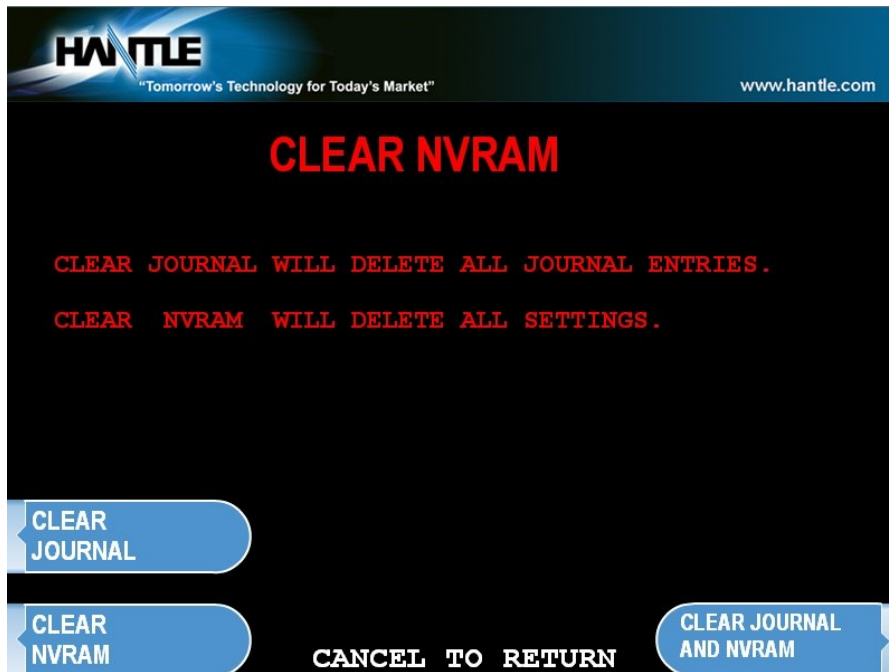
Below is a list of possible unique error codes when using the Standard 3 message protocol. Error codes / descriptions will vary depending on which processor is used.

STANDARD 3 ERROR CODES	DESCRIPTION
D00B0	Terminal ID missing
D00B1	Transaction Code missing
D00B2	Working Key Indicator missing
D00B3	Working Key missing
D00B4	Surcharge Amount Indicator missing
D00B5	Sequence Number missing
D00B6	Response Code missing
D00B7	Authorization Number missing
D00B8	Transaction Date missing
D00B9	Transaction Time missing
D00BA	Business Date missing
D00BB	Amount1: Balance Amount missing
D00BC	Amount2: Actual Surcharge Amount missing
D00BD	Sequence Number in reversal response missing
D00BE	Response Code in reversal response missing
D00BF	Business Date in host total response missing
D00C0	Settlement in host total response missing
D0101	Expired Card
D0102	Unauthorized usage
D0103	PIN error
D0104	Invalid PIN
D0105	Bank unavailable
D0106	Card not supported
D0107	Insufficient funds
D0108	Ineligible transaction
D0109	Ineligible account
D0110	Number of daily withdrawals exceeded
D0111	Cannot process transaction
D0112	Amount too large
D0113	Account closed
D0114	PIN tries exceeded
D0115	Database problem
D0116	Withdrawal limit already reached
D0117	invalid amount
D0118	External decline
D0119	System error
D0120	Contact card user
D0121	Routing lookup problem
D0122	Message edit error
D0123	Transaction not supported
D0124	Insufficient funds
D0125	Western Union sender data error
D0126	Western Union receiver data error
D0127	CRC error

APPENDIX B: CLEARING NVRAM

To clear NVRAM on the Tranax T4000™, begin by entering the Operator Function Menu using the Master Password. Next enter the Customer Setup Menu.

Press the lowest button on the right side of the LCD panel. This will give you access to the CLEAR NVRAM Menu. This operation can also be performed from the rear Service Panel.



***** WARNING *****

Once in the CLEAR NVRAM Menu, there is no extra authorization before data will be wiped out permanently. DO NOT press any key within this menu unless you are absolutely sure you want to permanently delete this data!

CLEAR JOURNAL

Selecting this will delete all journal data permanently

CLEAR NVRAM

This will delete all programmed parameters and return everything (including passwords) to the default settings. This does NOT include the master keys which are stored in the EPP.

CLEAR JOURNAL AND NVRAM

This option performs both of the options listed above. Both the programmed parameters and journal are permanently deleted and all settings are returned to default.

USE CAUTION WITH THESE FEATURES – DATA LOST CANNOT BE RECOVERED

APPENDIX C: TDES Key Installation

TDES Master Key Installation

Triple - Data Encryption Standard or TDES was designed as a way to strengthen the security of the master key by upgrading from a 16 bit key to a 32 bit key. In addition to the required software changes to support the TDES, the specification calls for a pin-pad to encrypt any data sent between the keypad and the CPU. In this new configuration the master keys are stored securely within the pin-pad, rather than the mainboard as done previously.

Hardware Specification:

Hantle T4000™ with EPP-B2 (Encrypted Pin Pad)
PCI approval number 4-70003

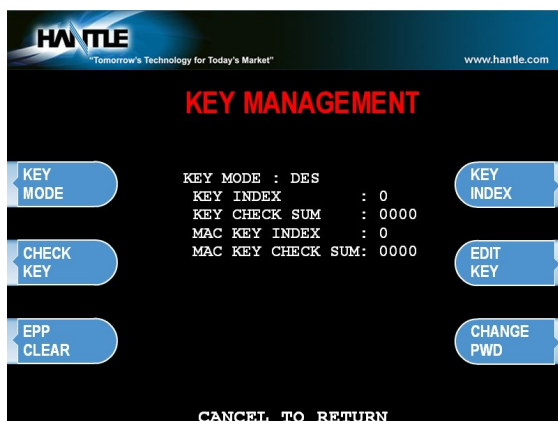
Installation Procedure:

To access the Key Management menu from Host Setup, you'll need to enter the Secure Mode Password (parts 1 and 2). See page 3.5 for Secure Mode instructions.

NOTE: You cannot enter Master Keys or Key Management from the Service Panel.

Default Secure Mode password is:

Part #1 = 000000 / Part #2 = 000000



Access the Key Mode selections by entering the operator function menu [ENTER]+[CLEAR]+[CANCEL] - 1, 2, 3 (see operator manual).

Enter Master Password and choose Host Setup

Note: *Master Password is required to change master key.*

1) **Select Key Mode**

The table below describes the format for each key mode.

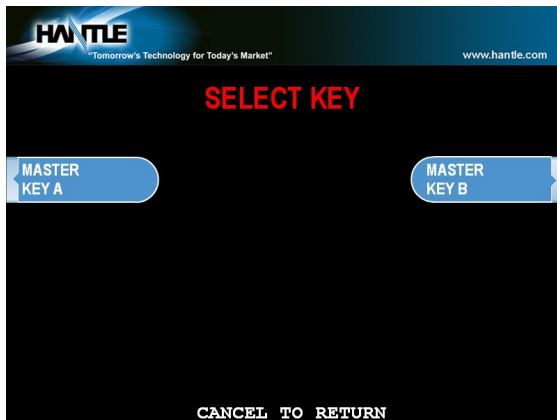
DES	2 - 16 digit master keys entered as Part A and Part B.
Dual Master Key	2 - 16 digit master keys entered as Part A and Part B (a common key is entered, and then a working key is downloaded from the host).
Unique Key, DES	2 - 16 digit master keys entered as Part A and Part B - with 10 digit unique serial number entered prior to each part.
TDES	2 - 32 digit master keys entered in 16 digit pieces, Part A (left and right) and Part B (left and right)
Unique Key, TDES	2 - 32 digit master keys entered in 16 digit pieces, Part A (left and right) and Part B (left and right) - 10 digit unique serial number entered prior to each part.
MAC	2 -16 digit master keys entered as Part A and Part B, with 2 additional 16 digit numbers entered as MAC Part A and Part B
Unique Key, MAC	2 -16 digit master keys entered as Part A and Part B, with 2 additional 16 digit numbers entered as MAC Part A and Part B - 10 digit unique serial number entered prior to each part of the master key only.
TDES, MAC	2 - 32 digit master keys entered in 16 digit pieces, Part A (left and right) and Part B (left and right), with 2 additional 16 digit numbers entered as MAC Part A and Part B

Unique Key modes use a unique 10 digit serial number that is entered before each half of the master key to allow the processor to bind the key to the terminal ID automatically. In cases where the processor provides a serial number that is less than 10 digits, zeros must be added at the beginning of the number to equal 10 digits.

2) Enter Master Key

Master Key security requires that no one person has access to all parts of the key. To ensure this, the processor will provide keys in separate sealed envelopes (sometimes referred to as "key components"). Each envelope contains either one or two 16 digit keys and in the case of unique key, a serial number. The diagram below shows a sample Unique Key, TDES master key.

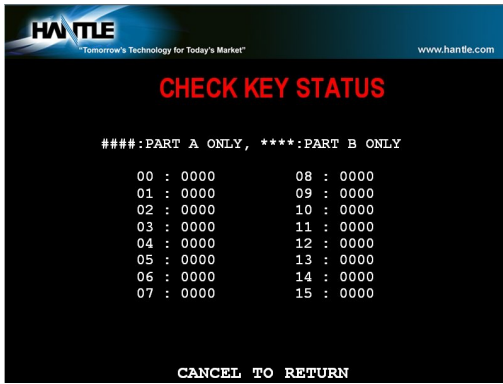
Date Stamp: 05/15/2003							
Serial #: 235913							
Digits L:95D1 R:8A4C 3D:E130AB							
<table border="0"> <tr> <td>Left Part: 4536 5A3C D349 AB27</td> <td>Right Part: 2352 6AD3 F1CC 628A</td> </tr> <tr> <td>Left Check Digit: 81D3</td> <td>Right Check Digit: 712A</td> </tr> <tr> <td colspan="2" style="text-align: center;">Single DES Encryption uses left part only.</td> </tr> </table>		Left Part: 4536 5A3C D349 AB27	Right Part: 2352 6AD3 F1CC 628A	Left Check Digit: 81D3	Right Check Digit: 712A	Single DES Encryption uses left part only.	
Left Part: 4536 5A3C D349 AB27	Right Part: 2352 6AD3 F1CC 628A						
Left Check Digit: 81D3	Right Check Digit: 712A						
Single DES Encryption uses left part only.							



Begin by choosing Edit Master Key from the menu

Depending on Key Mode, the menu prompts for Part A and Part B.

The Edit Master Key interface is designed so that Parts A and B can be entered at completely different times and in either order (Part A first, or Part B first). If a technician is dispatched to enter a key part, choose Check Key from the Key Management menu to determine which part of the key has already been entered.



Partially entered keys will appear in the index as ### or **** which denotes that either part A or part B has been successfully entered. (A = #, B = *)

This would tell the second technician that they need to enter their key as Part B on index 12.

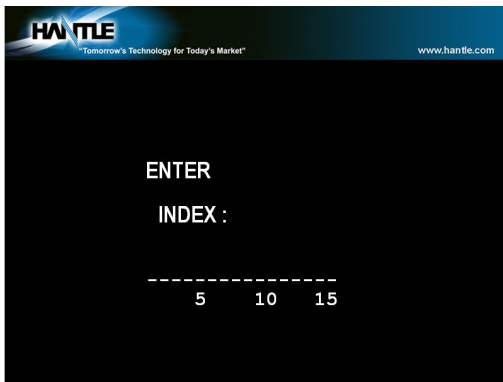
Part1 = Part A / Part2 = Part B



Once you have selected Part A or B, you'll be prompted to enter a Key Index.

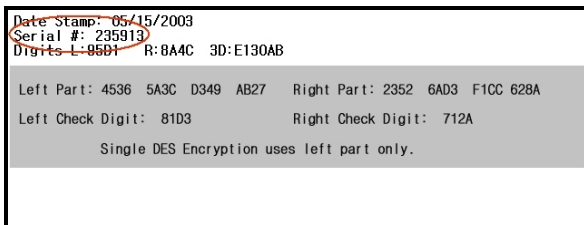
This index points to the location where the key will be stored. There are 16 possible memory locations (0-15) available. Unique master keys must be stored at location #12, and MAC keys at location #15.

The interface will default the values for Unique and MAC keys regardless of what you enter. It is very important to remember that both parts of a key must be entered on the same index. If you enter Part A on index #2 and Part B on index #3 the key will not be complete. Use the Check Key function (shown above) to determine where your keys parts have been entered.

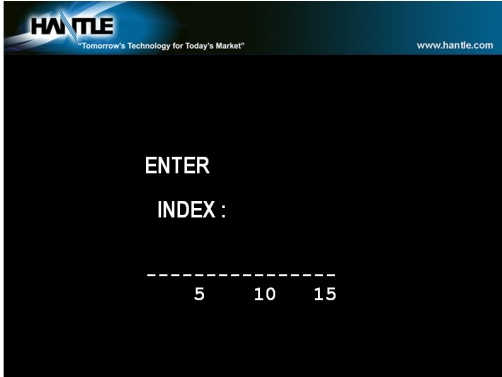


If entering a Unique key, next you'll be prompted to enter the key serial number.

This 10 digit number is found on the paperwork containing your master key(s). If the number the processor has provided is less than 10 digits, you'll need to add zeros to the **beginning** of the number to equal 10 digits.

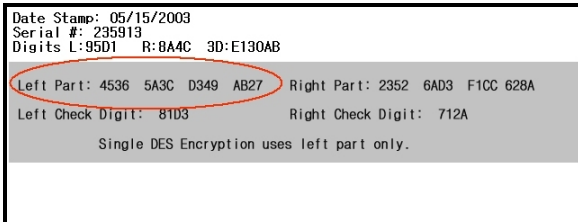


In the example shown at left, the serial number is 235913. This 6 digit number would be changed to 0000235913 to create 10 digits.



The next step is to enter the master key itself. If you are using TDES, you'll need to enter the left portion first.

After entering the key, you'll be prompted to enter it a second time for verification.



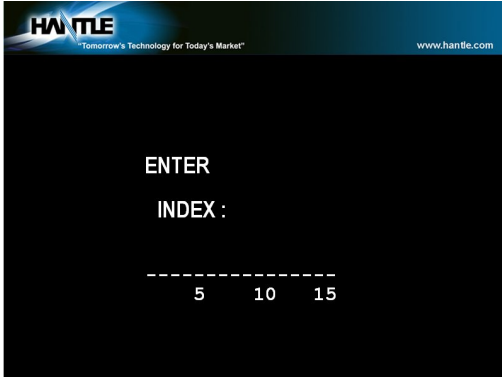
The 16 digit alpha-numeric key is entered using the pin-pad only.

Letters are entered by using the arrow and function keys. Use the pin-pad layout below.

1	2	3	F
4	5	6	E
7	8	9	D
A	0	B	C

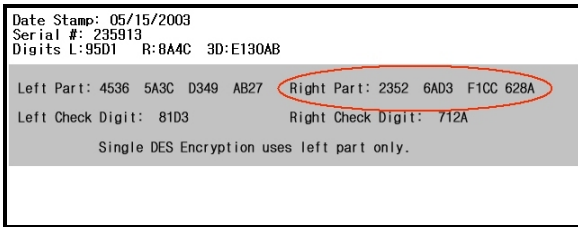
EPP (Encrypted Pin Pad) Master Key Alpha-Numeric Key Layout

At this point the left (or first 16 digit) portion of the master key has been entered successfully.

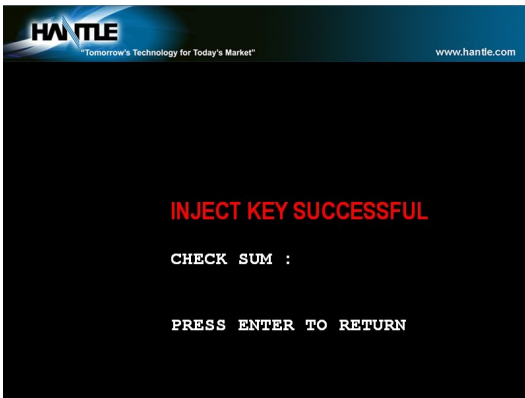


If you are entering a 32 bit key (TDES), the second or "Right" half of the key is entered next.

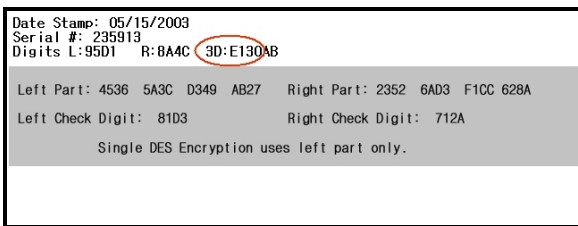
This option will only appear when in TDES mode.



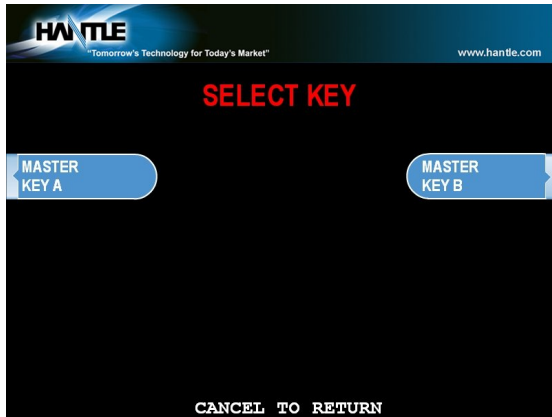
After entering the right portion of the key successfully you'll be prompted with a check digit as shown below. Verify the check digit with the information provided by the processor.



Check digits appear after entering both the right and left portion of each part of the key.



Compare the check digit against the number located at the top of the key component. This represents a check digit for the combined keys. There is not a check digit shown for left and right portions individually.

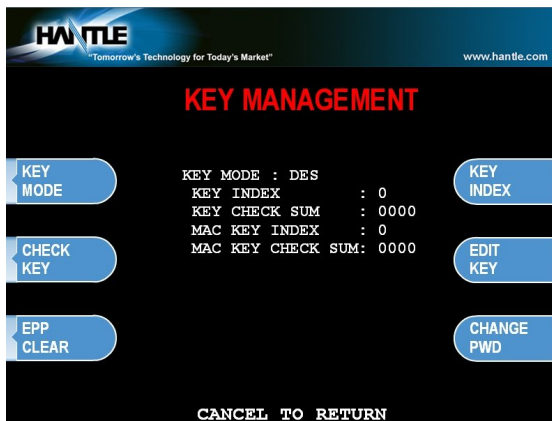


After successfully entering both the left and right portions of Part A, you'll be returned to the Edit Master Key menu.

At this point you can proceed with Part B, or if Part B is to be entered at a later time you can exit the menu and power off the machine until both halves of the key are entered.

Part B is entered with the same procedure given for Part A. Enter the left and right (for TDES) portions of the keys and verify the check digits against what has been provided by the processor.

3) Verifying Master Key

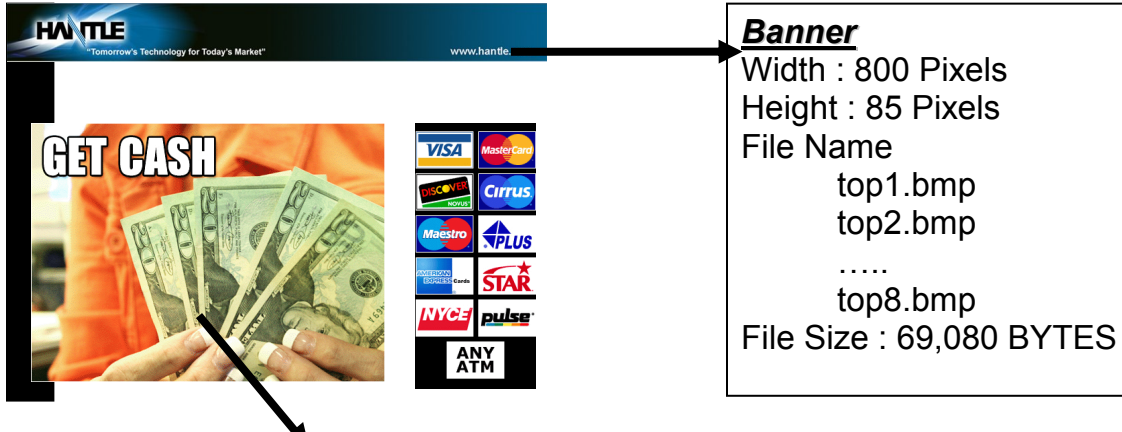


Once both Part A and Part B have been entered successfully, the key management menu will display a check digit for the key index where the master key was entered. If no check digit is entered, use the check key screen to determine where the key parts were entered, then re-enter the keys as necessary.

At this point, the master key is successfully entered. If all other parameters have been entered properly, power off the ATM and power on to connect to host and initialize the keys.

APPENDIX D: Graphics Installation

Banner or Advertisement screens can be loaded to the Hantle T4000™ machine either using a SDRAM card (at the ATM) or by using TranRMS monitoring software (to load remotely). Please see below for basic file format specifications and instructions for use with a SDRAM card.



Banner
 Width : 800 Pixels
 Height : 85 Pixels
 File Name
 top1.bmp
 top2.bmp

 top8.bmp
 File Size : 69,080 BYTES

Center Advertisement Graphic
 Width : 528 Pixels
 Height : 386 Pixels
 File Name
 center1.bmp
 center2.bmp

 center8.bmp
 File Size : 204,888 BYTES

Bmp File Format
 : 8bit (256 colors) BMP
 : No Compression

You can have up to 8 banners and 8 center graphic files and must be named as followed:

Banner: top1.bmp, top2.bmp, and so on up to top8.bmp

Center: center1.bmp, center2.bmp, and so on up to center8.bmp

**** DO NOT use more than 256 colors when creating the graphic images. The 4000T™ was designed to use graphics of that format for efficiency and best performance****

Loading Graphics using SD (Secure Digital) card



SD card should be less than 2GB capacity and formatted as FAT or FAT16 file system

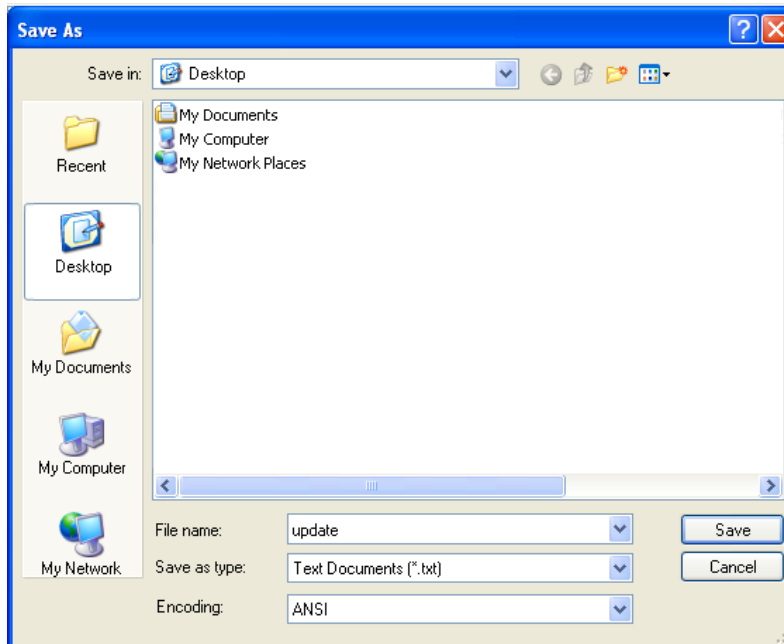
SD card reader is required to load files from your PC

To prepare the SD card for uploading graphics.

1. Remove all the data from the SD card.
2. Create a blank file called **update.acu** and save it on the card.

To create this file:

- a. Open up a blank notepad document.
[Start → All Programs → Accessories → Notepad]
- b. Save the blank document as "**update.txt**" in the SD card.



- c. Once it's saved rename the file to "**update.acu**".



once renamed, the icon changes



After the "**update.acu**" file has been created, copy it to the root folder of the SD card.

3. Open the SD card in 'My Computer', and create a folder called "Common".
4. Open the "Common" folder, and create a sub-folder called "img4SCR".
5. Inside the img4SCR folder is where you want to copy all your graphic files.
 - The graphic files must follow the naming convention that we describe on page 1. (ie: center1.bmp, center2.bmp or top1.bmp, top2.bmp).
6. Once your graphic files are copied, insert the SD card into the SD card slot on the mainboard located behind the LCD.
7. Power off, then power on the 4000T™ with the power supply switch.
8. When the ATM is fully initialized then remove the SD card.

Enabling the Center Graphics:

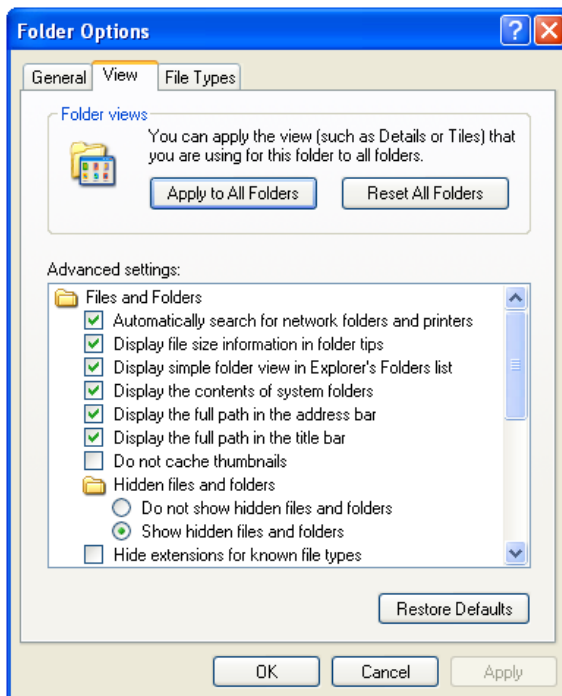
1. Go into the Operator Menu.
2. Then to Customer Setup > Graphics > **Advertise** EN/Disable and go through each advertisement you want to show up and turn it ON.

Enabling the Banners Graphics:

1. Go into the Operator Menu.
2. Then to Customer Setup > Graphics > **Banner** EN/Disable and go through each banner you want to show up and turn it ON.

Windows XP users:

Before creating the file in step #2, you may need to change your file options. Open a folder and click on "Tools", select Folder Options



Make sure Folder Options match those shown here. Specifically the "Hide extensions for known file types" option which needs to be unchecked.

If these options are not set properly, the update.acu file may not function, causing the graphics to not load.

How to install Coupon Graphic for Hantle T4000™

The T4000™ is capable of printing a low resolution graphic on each receipt. To use this feature, you'll need to create the graphic (BMP file format) to the specifications listed below, and then add the file to the machine using the SD RAM card slot located on the rear of the main circuit board.

Once the graphic is loaded, it will copy into memory each time the machine is powered on. This eliminates the need to copy the graphic each time a receipt is printed.

File Specification

File Format: 2 color (1bit) bmp
Maximum Image Width: 576 pixels
Height: Variable (depends on the width)
Maximum file size: 16KB
Maximum Dimensions: 576 pixels (W) x 222 pixels (H)
File Name = LogoImg.bmp (save file as)

**** Please note that the maximum file size is CRITICAL.****

You cannot exceed 16KB. Adjust the height and width of your graphic to ensure it's under that size cap. Also, 2 color graphics mean white and black only, do not use grey-scale.

File location on T4000™ (download image with SD CARD)

From the root of the SD CARD:
Common\Img4SCR\LogoImg.bmp

Copy the file from your PC to that path on the SD Card. If the SD card is otherwise blank, you'll need to create a blank file (with notepad) called update.acu. Open up notepad with a new blank file and then "Save As" and name it update.acu and save it to the root of the SD Card. The presence of that file in the root tells the T4000™ to copy the graphic file into memory.

Once the graphic file has been uploaded to the machine, you need to enable it within the Operator Function Menu.

Customer Setup → Coupon Setting Logo → Enable

Once this has been done, upon exiting the Operator Menu, you'll see a notice that the graphic is being loaded into memory. This screen will reappear each time you power off and on the ATM.

APPENDIX E: CDU Maintenance

Dispenser Sensor Cleaning Instructions

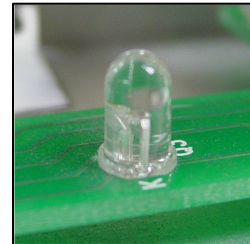
The Hantle MCDU dispensers contain several optical sensors used to count and measure notes as well as time note delivery.

Through normal use, dust can collect on the sending side of the sensor pairs, causing the readings to skew which can cause C00xx errors.

Depending on environmental conditions at the machine location, Hantle recommends periodic cleaning of these sensors to prevent errors or to correct error conditions. Specifically C0083/84/85, C0012 and C002x errors have been shown to be caused by contaminated sensors. Particularly the sensors located at the exit gate.

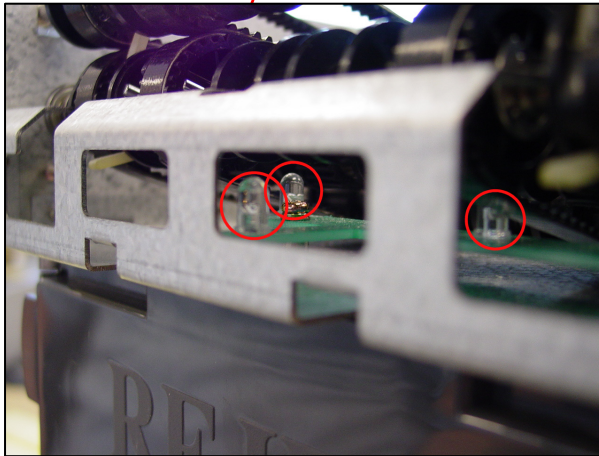
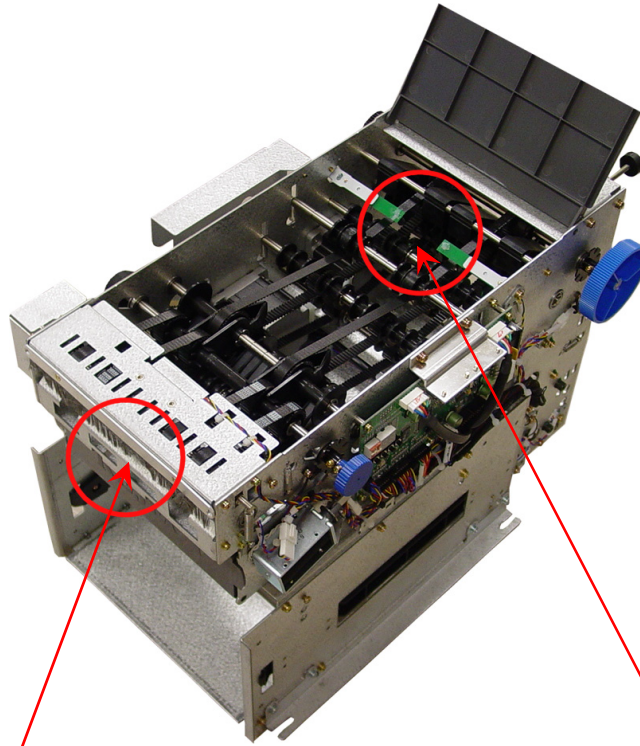
Each sensor pairs contain a sending sensor, and a receiver. The sending sensor looks like a clear LED mounted to a circuit board. As shown at right.

To clean the sensor, simply wipe the surface using a cotton-swab (Q-Tip®) or any clean soft cloth. It is not necessary or recommended to use a solvent. Dust contamination is not always visible.

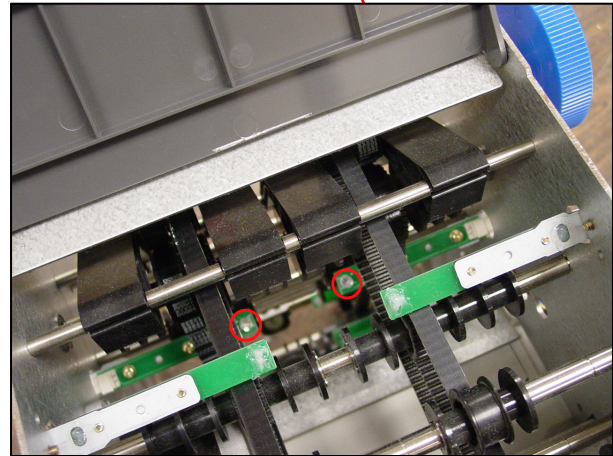


MCDU Sensor Locations

Front / Top



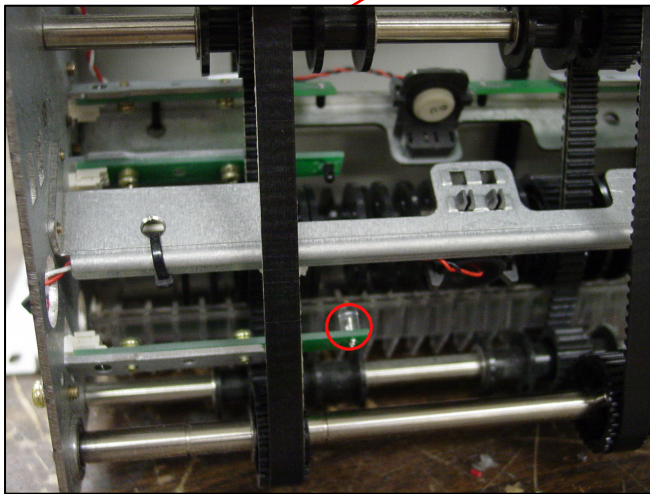
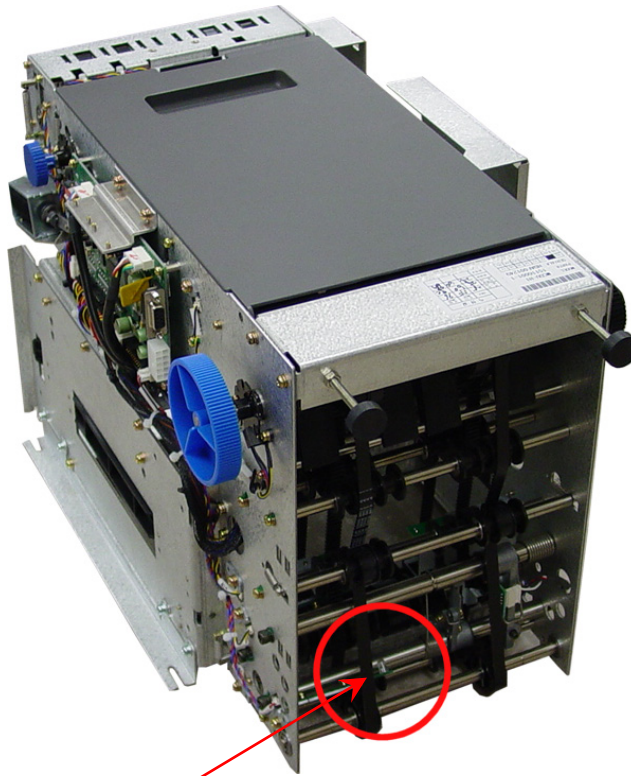
There are 3 sensors located behind the metal bracket, directly above the Reject Bin. These can be reached by inserting a cotton swab through the front bracket.



There are 2 sensors located in the rear inside portion of the dispenser. Open the lid of the dispenser and reach between the belts. Be careful to not bump the top sensor boards.

MCDU Sensor Locations

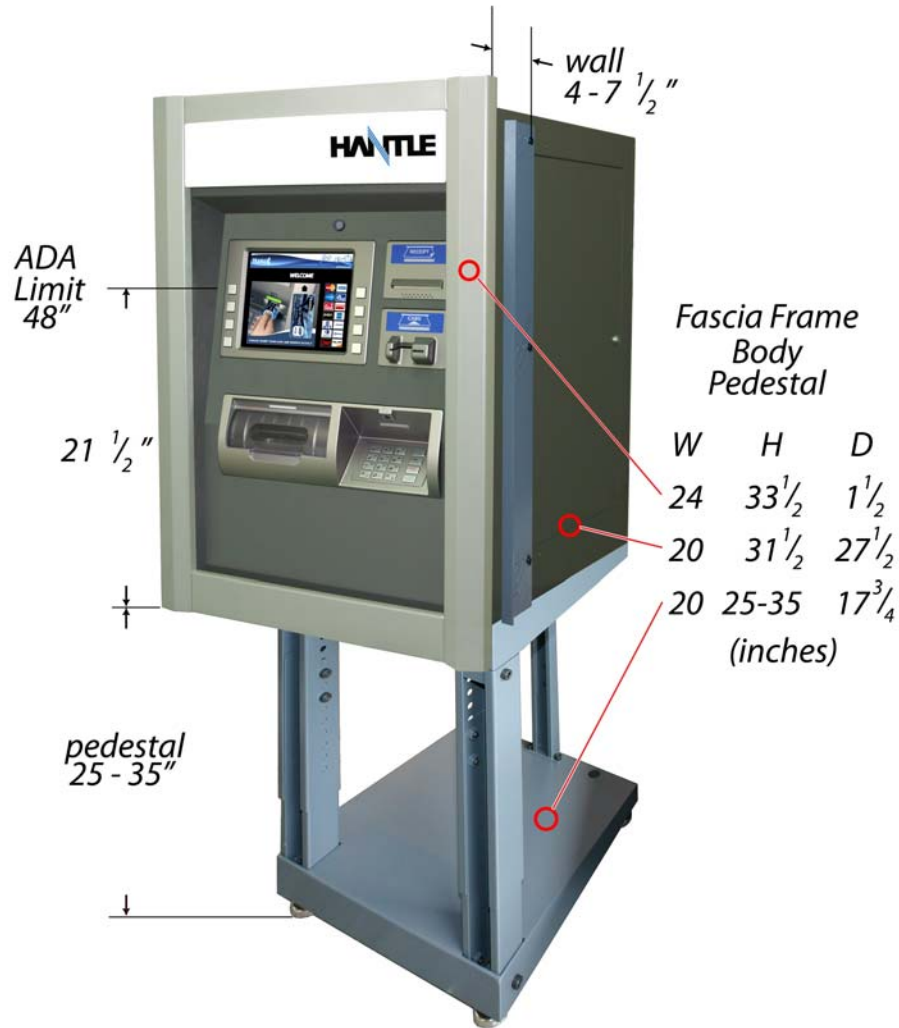
Rear



There is a sensor located on the lower rear portion of the dispenser.

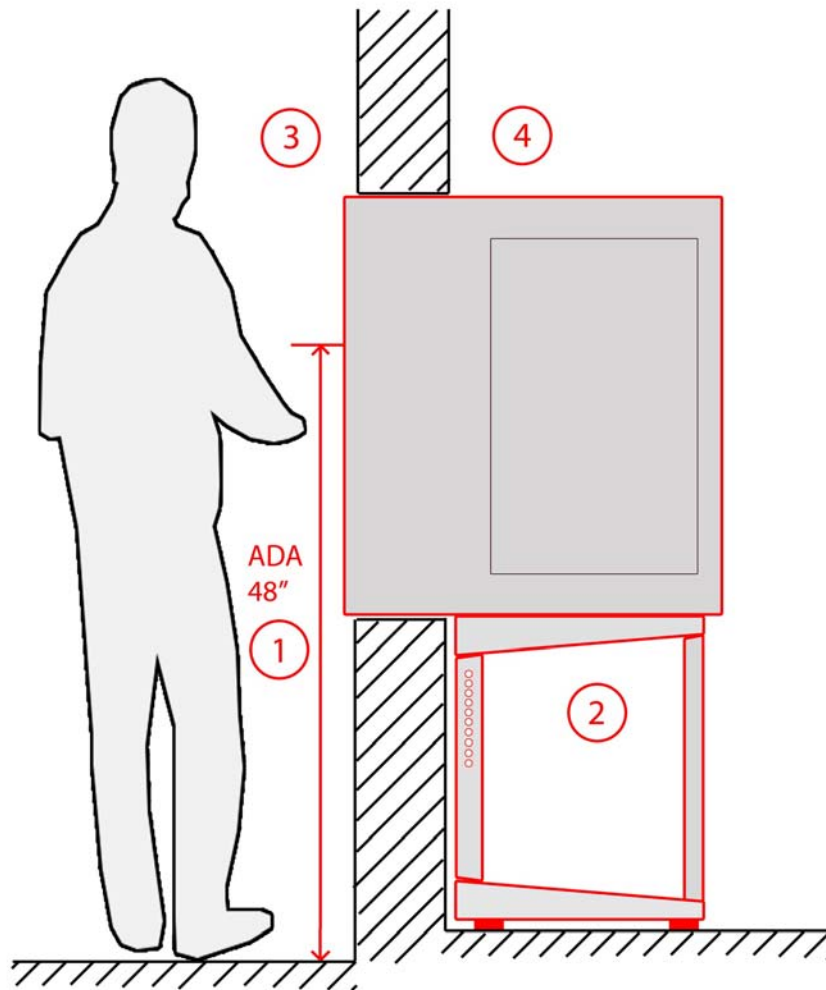
T4000 Installation Instructions

Overall Dimension of T4000



Overall ATM Installation Procedure

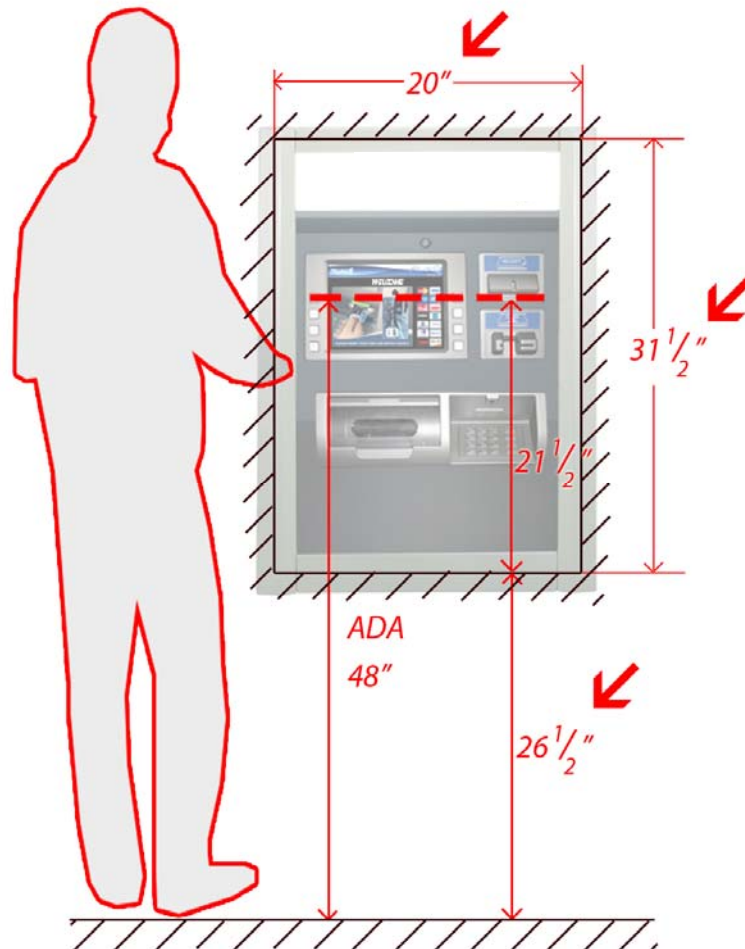
- ② Prepare an opening of 20"(W)x31 ½"(H) for ATM body at the height of 26 ½" from the ground
- ② Assemble ATM and pedestal and insert ATM body (after removing fascia frame) into the opening from inside the building
- ② Install a fascia frame to the front of ATM body from outside the building and pull the ATM tight to the wall from inside the building
- ② Install movement restrainers to both sides of ATM body from inside the building



Step 1 Prepare an opening through the wall

Dimension of ATM body only (not including fascia frame) is about 20"(W)x31 1/2"(H). The Opening on the wall should be a little bit bigger than the body of ATM so that it can be plugged into the opening.

The ATM installation should be compliant to ADA regulation that the accessible point at its highest level should be at 48" or less. The ATM has its highest accessible point at the function key at both sides of display unit as shown in the illustration below.



Step 2 Assemble ATM and Pedestal

Step 2.1 Assemble pedestal

The height of pedestal should be calculated based on the difference of height from the bottom line of opening on the wall to the floor inside the building. The one step change is comparable to an inch (1") moving up or down. The leveling and minor height adjustment can be done through four (4) wheels along the corner of pedestal.

ASSEMBLE PEDESTAL BY THE ORDER OF STEPS 1, 2, AND 3



Step 2.2 Attach ATM pedestal (Adjust Height)

Use two nuts to fasten the ATM body to the pedestal from the bottom of ATM body. The fastening points can change according to the position of ATM on top of pedestal. Please find the threaded holes matching to your configuration of ATM and pedestal from the bottom of ATM body.



Step 2.3 Remove the fascia frame

You should remove the fascia frame or collar before pushing ATM body to the opening on the wall from inside the building.

Step 1 Remove the six screws

Do not put them back into the position when the system is installed to the wall

Step 2 Release the two collar restrainers from inside

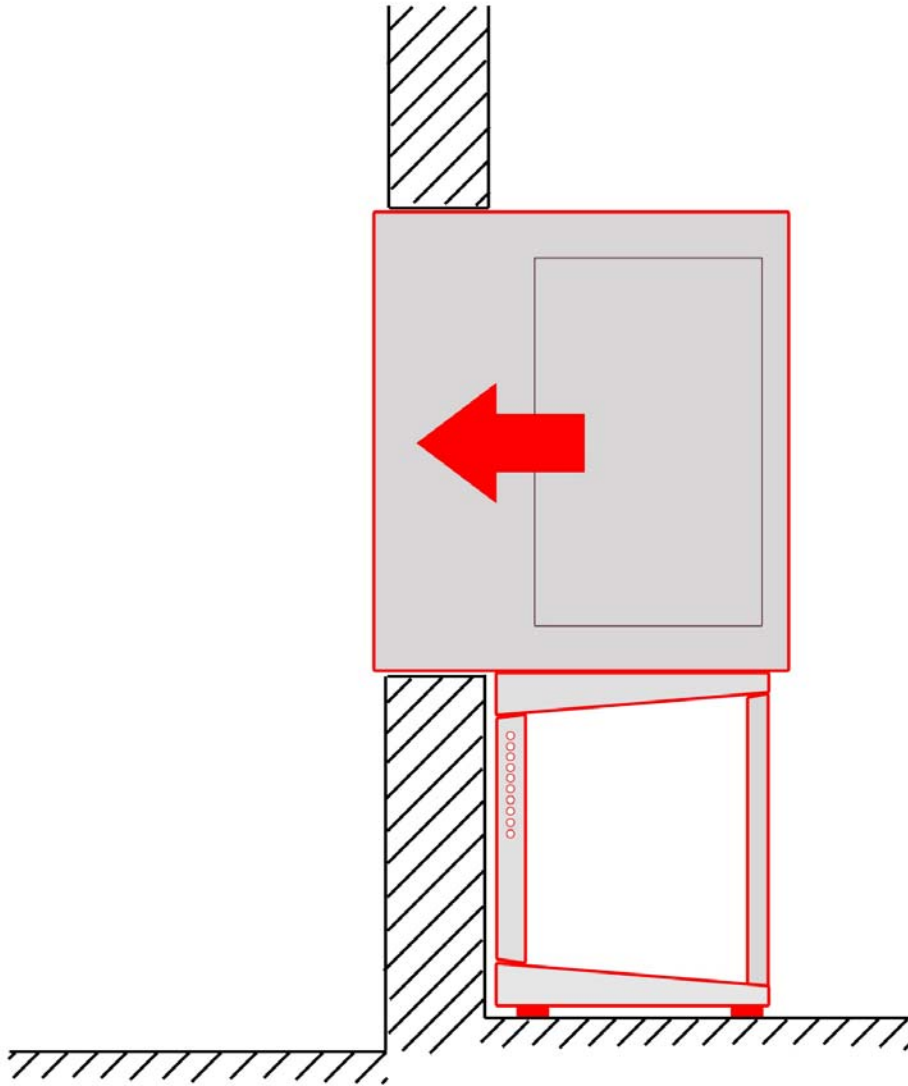
Remove thumb screw and release the collar restrainer
The restrainer holds the collar in the locked position

Step 3 Snap the collar up to release



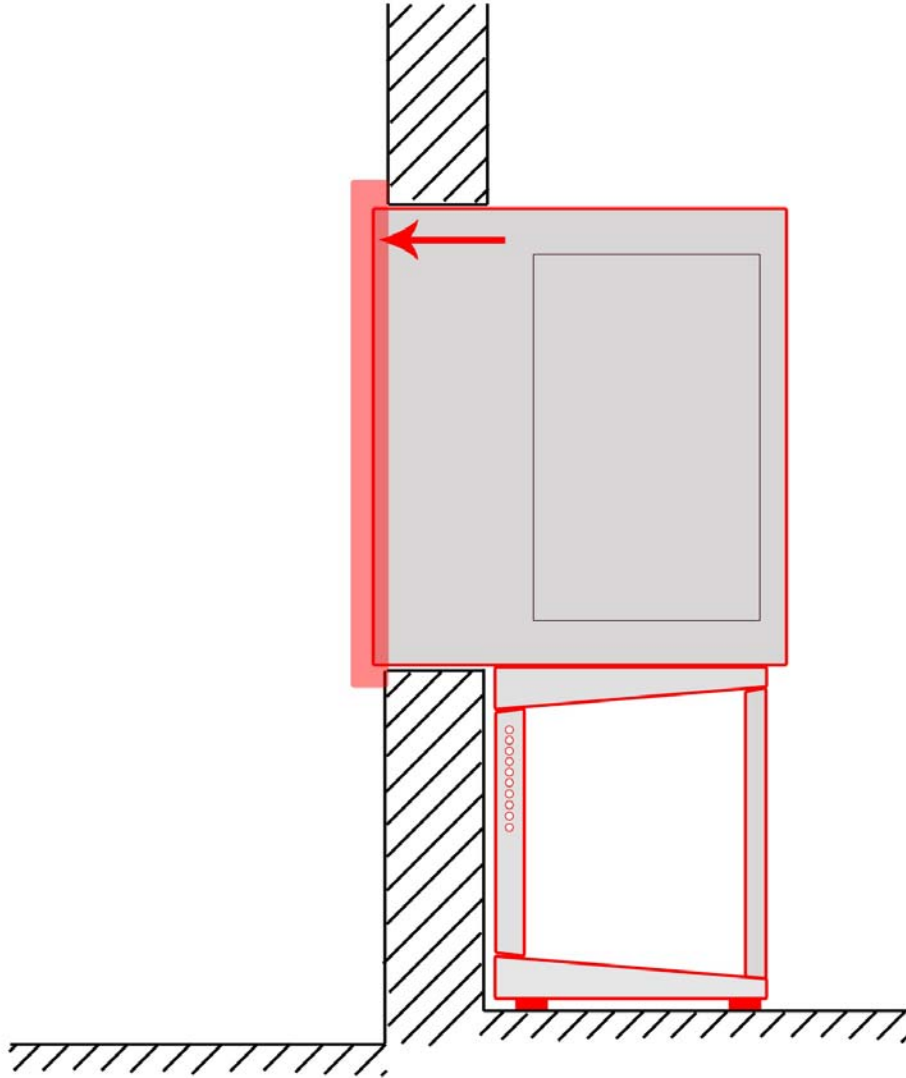
Step 2.4 Insert ATM body into the wall and level it through the adjustable pads at the four bottom corners

Finalize the ATM position through the wall after leveling the ATM and securing room for fascia frame. Seal the gap on the wall along the ATM body before installing the fascia frame.



Step 2.5 Install fascia frame back on the ATM

(reverse procedure at Step 2.3)



Step 2.6 Securing the ATM body to the wall from inside by applying two adjustable fastening brackets to both sides of ATM body

This bracket protects the ATM body from being pulled out of the wall from outside the building.

